

3 Philia Court MANSFIELD PARK SA

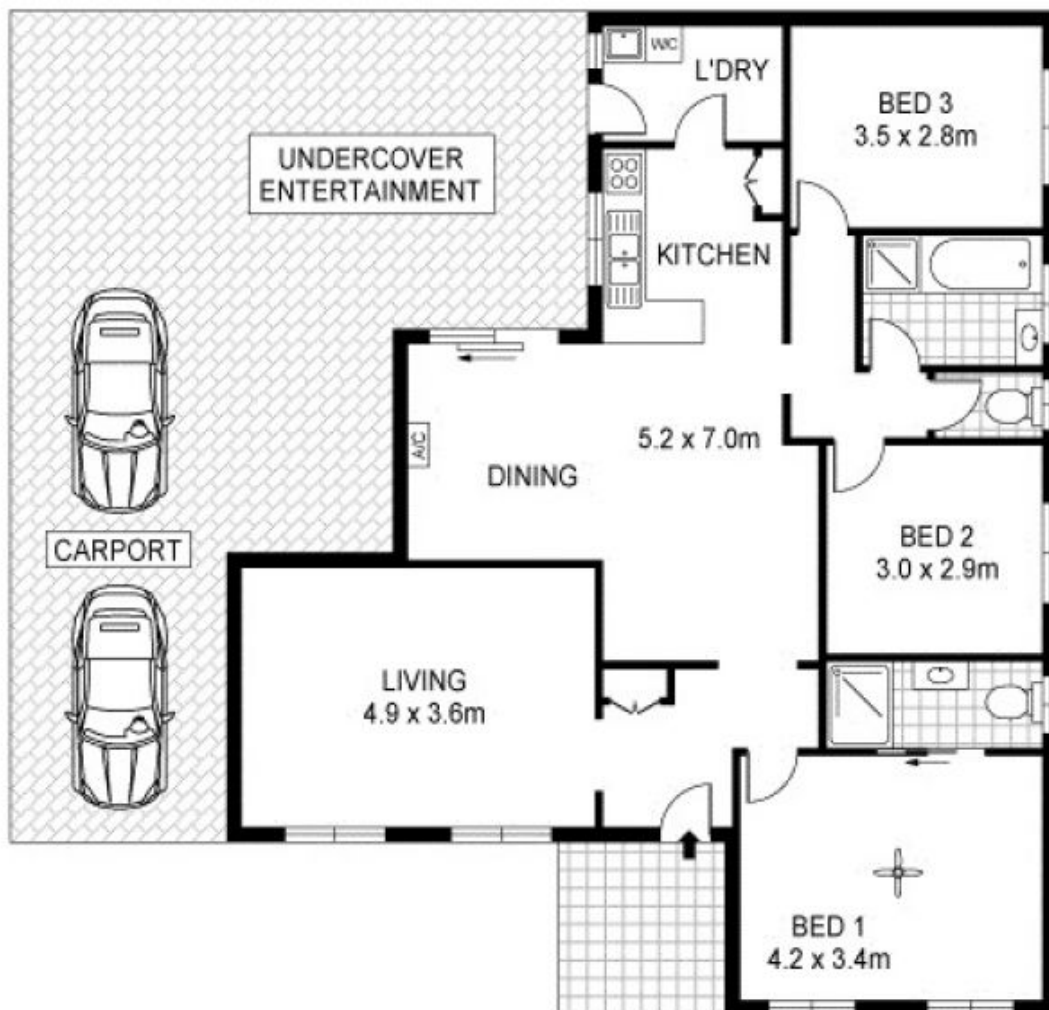
3  2  2 

This a delightful family home situated on a generous size allotment and offers a great floor plan of 3 bedrooms, master with ensuite and ceiling fan, separate entrance foyer with access through to the generous size living room, whilst the delightful open plan family area incorporates the lovely kitchen with ample built-in cupboards, double bowl sink and preparation breakfast bar overlooking the spacious dining/family area with glass sliding doors accessing the great outdoors.

The main bathroom comprises bath, shower alcove, hand basin and the convenience of a separate wc, whilst the laundry is located adjacent the kitchen with outside access.

Other features of the home include a wall unit air conditioner in open plan living and a delightful decor throughout.

View : <https://www.michaelkris.com.au/sale/sa/western-beachside-suburbs/mansfield-park/residential/home/5832701>



Scale in metres. Indicative only. Dimensions are approximate. All information contained herein is gathered from sources we believe to be reliable. However we cannot guarantee its accuracy and interested persons should rely on their own enquiries

INT : 104m²
SHED : 12m²

3 Philia Court, Mansfield Park