



18 Crisp Road ELIZABETH DOWNS SA

3  1  2 

Available now for a 12 months lease

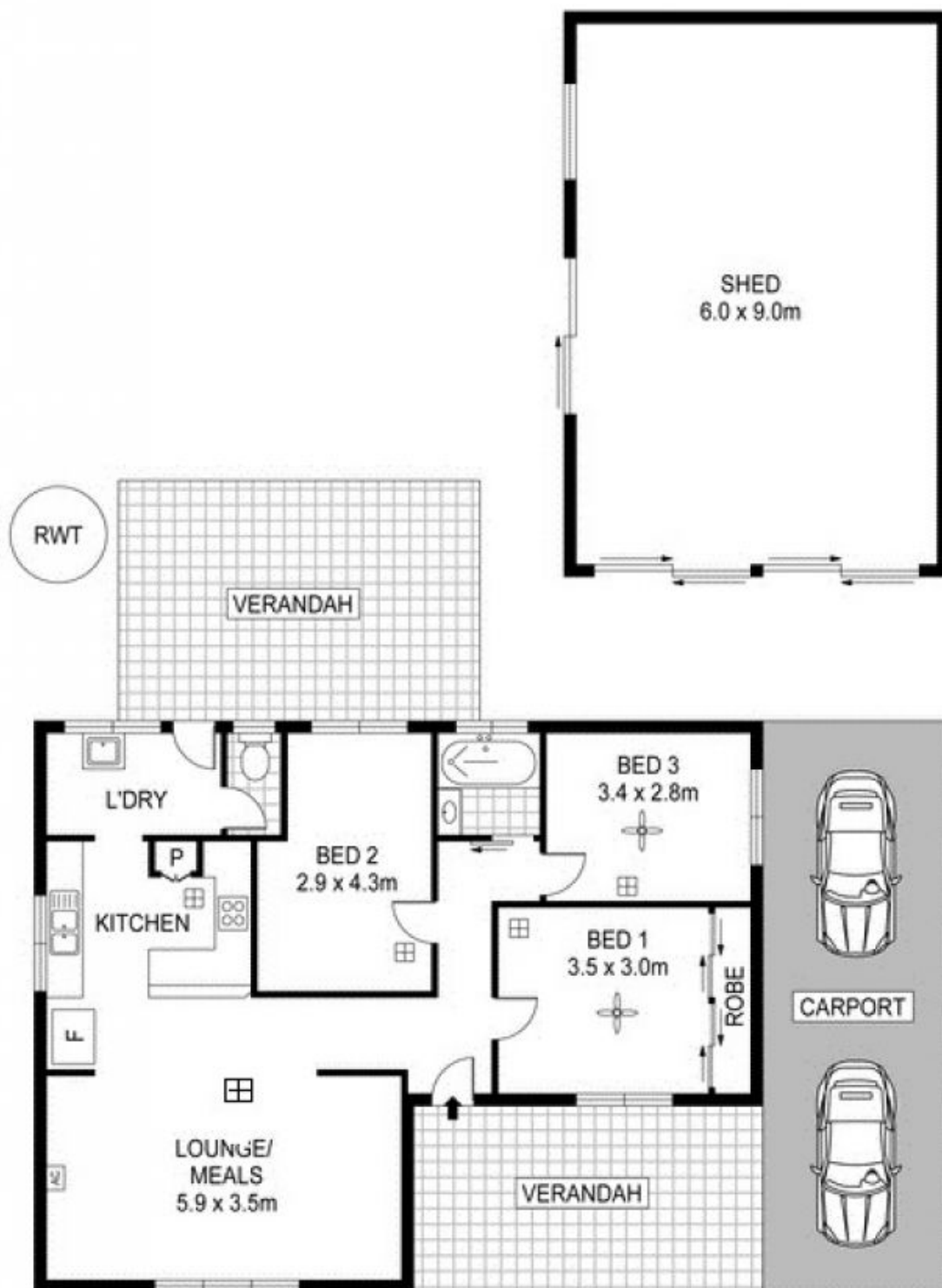
Updated Family Home with 6 x 9m Garage and space for cars, trailers and boats

On offer is this delightful family home with plenty of space for everyone.

Set on a generous allotment of approximately 639m² in a family orientated location close to schools, transport and only minutes to great shopping.

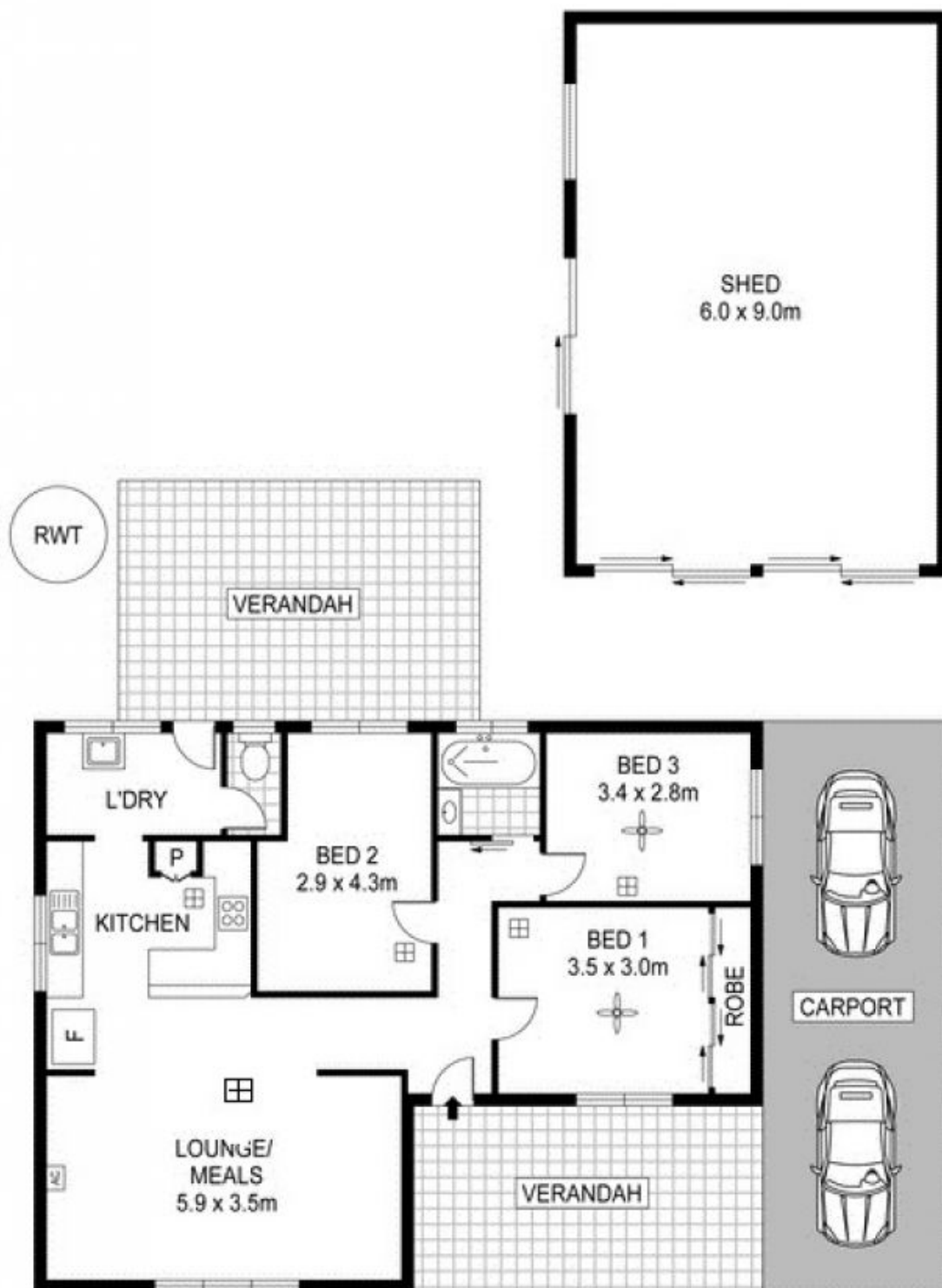
The well set out floor plan comprises 3 good size bedrooms, master with built-in mirrored robe and beds 1 & 2 with ceiling fans. The open plan living area is very spacious comprising a well-designed modern kitchen with plenty of built-ins including pantry cupboard, double bowl

View : <https://www.michaelkris.com.au/lease/sa/north-north-east-suburbs/elizabeth-downs/residential/house/5833854>



Scale in metres indicative only. Dimensions are approximate. All information contained herein is gathered from sources we believe to be reliable. However we cannot guarantee its accuracy and interested persons should rely on their own enquiries.

18 Crisp Road, Elizabeth Downs



Scale in metres indicative only. Dimensions are approximate. All information contained herein is gathered from sources we believe to be reliable. However we cannot guarantee its accuracy and interested persons should rely on their own enquiries.

INT : 88m²
SHED : 54m²

18 Crisp Road, Elizabeth Downs