



31 Findon Road WOODVILLE SOUTH SA

4  2  2 

How could you resist the opportunity to purchase?

This home, not only offers quality, class and location, it also has land area of 964m² with a frontage of 19m and depth of 53m (approx) which means there is plenty of space for further extensions or an in-ground pool (STCC).

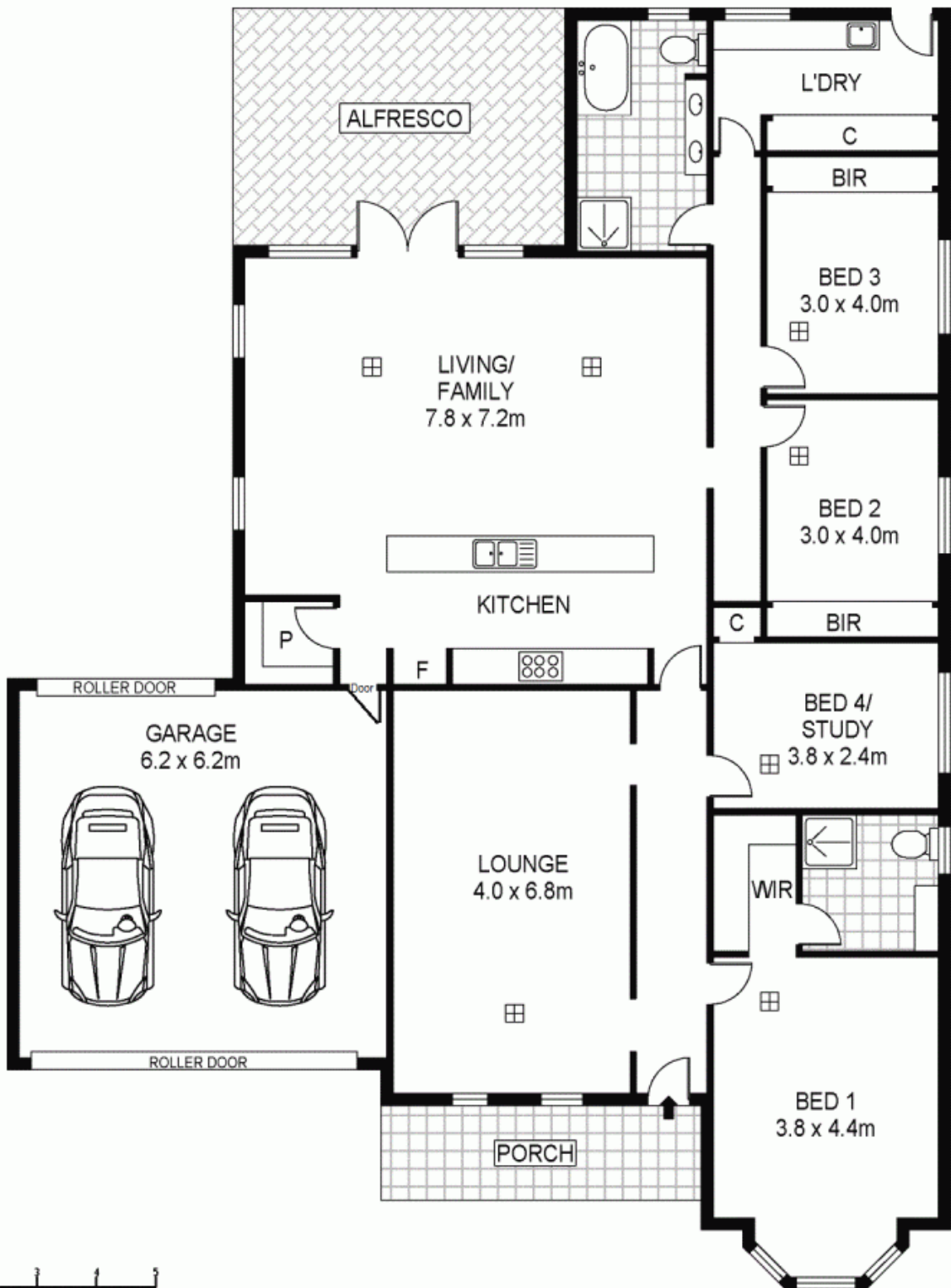
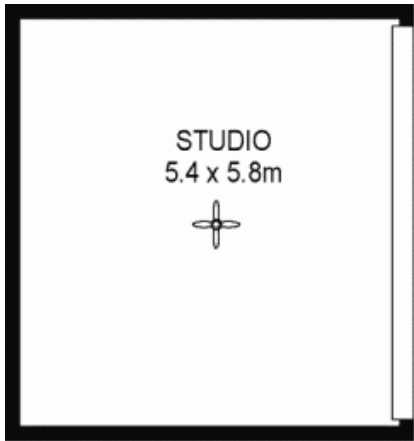
This Federation style home was built around 2010 and showcases class throughout the very expansive floorplan. The street appearance is pretty as a picture with its Federation style faade, verandah, fencing and lovely landscaped gardens.

The internal floorplan will satisfy the largest of families, complete with 4 bedrooms, or 3 plus study. The master bedroom is a fabulous size with an attractive bay window, deluxe ensuite and walk-in robe, bedrooms 3 & 4 with

View : <https://www.michaelkris.com.au/sale/sa/western-beachside-suburbs/woodville-south/residential/home/5834021>



Kris Papagiannis
08 8353 3000



Scale in metres. Indicative only. Dimensions are approximate. All information contained herein is gathered from sources we believe to be reliable. However we cannot guarantee its accuracy and interested persons should rely on their own enquiries

INT : 183m²

31 Findon Road, Woodville South