



496 Henley Beach Road FULHAM SA

2  1  2 

This is why we love Adelaide

Nestled comfortably between the city and the sea is this quality, classic 1960 built home on a 789m2 (approx) corner allotment.

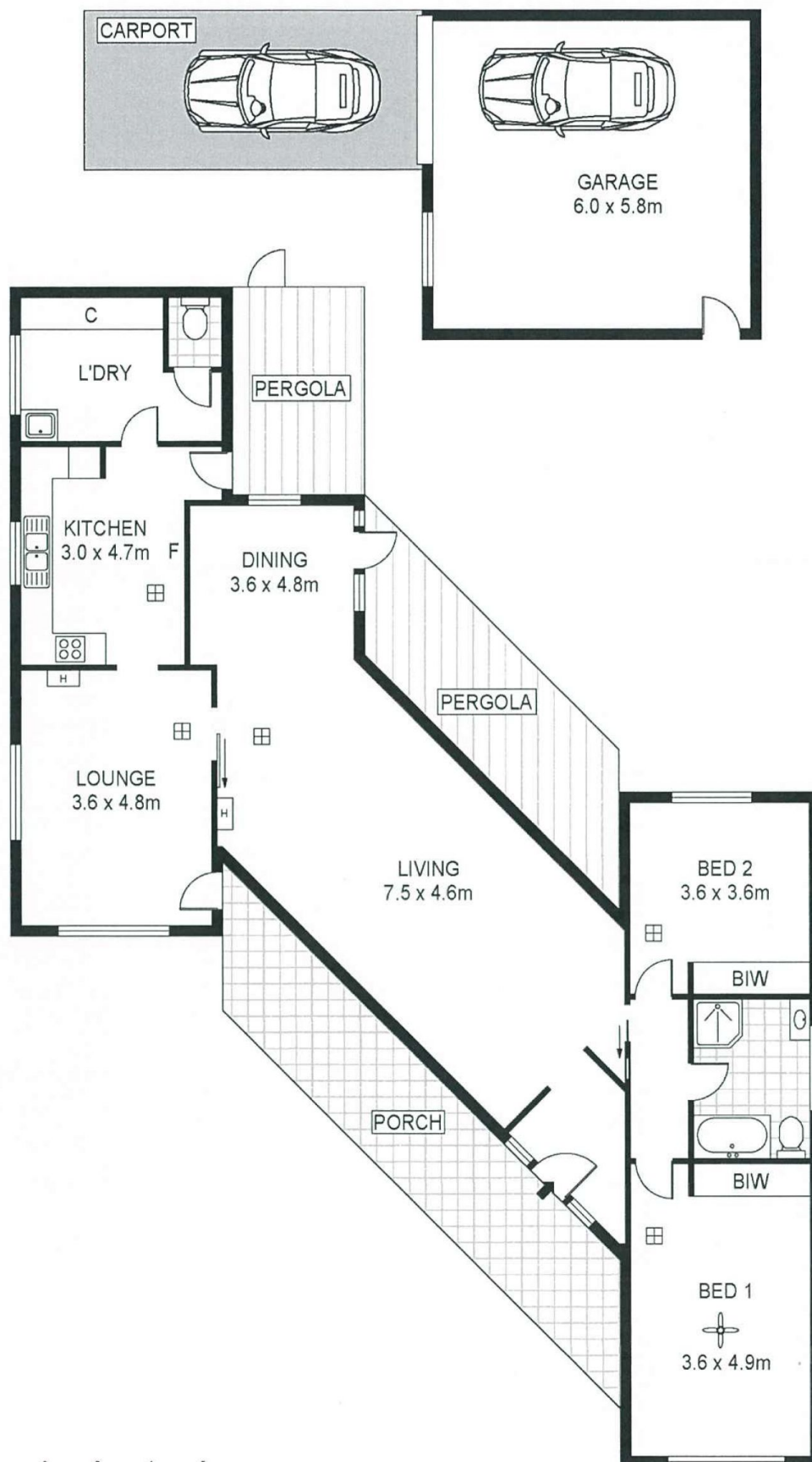
View : <https://www.michaelkris.com.au/sale/sa/western-beachside-suburbs/fulham/residential/house/5834029>

It certainly is a lovely older home but there is also great opportunity to develop the site (STCC).

A prime Henley Beach Rd location set back with service road access.

Torrens Linear Park access is just up the road. Shopping is across the road with public transport on the doorstep.

The home comprises a delightful large lounge with full length windows overlooking the pretty front garden. A formal dining room adjoins the lounge. There are 2 large bedrooms with built in robes, a good size kitchen right next



Scale in metres. Indicative only. Dimensions are approximate. All information contained herein is gathered from sources we believe to be reliable. However we cannot guarantee its accuracy and interested persons should rely on their own enquiries

INT : 161m²

496 Henley Beach Road, Fulham