



9 St Lawrence Avenue CROYDON SA

3  1  2 

Taking pride of place in St Lawrence Avenue is this gorgeous C1923 Bungalow located on a generous allotment of approximately 627m2 and beautifully updated and maintained over many years.

Being located in the heart of Croydon makes this home a very special find, within easy walking distance to the ever so popular Queen Street precinct offering an array of cafes, close to shopping, public transport and schools.

Behind the Heritage style fence you will find a beautifully landscaped garden with all the favourites of yesteryear.

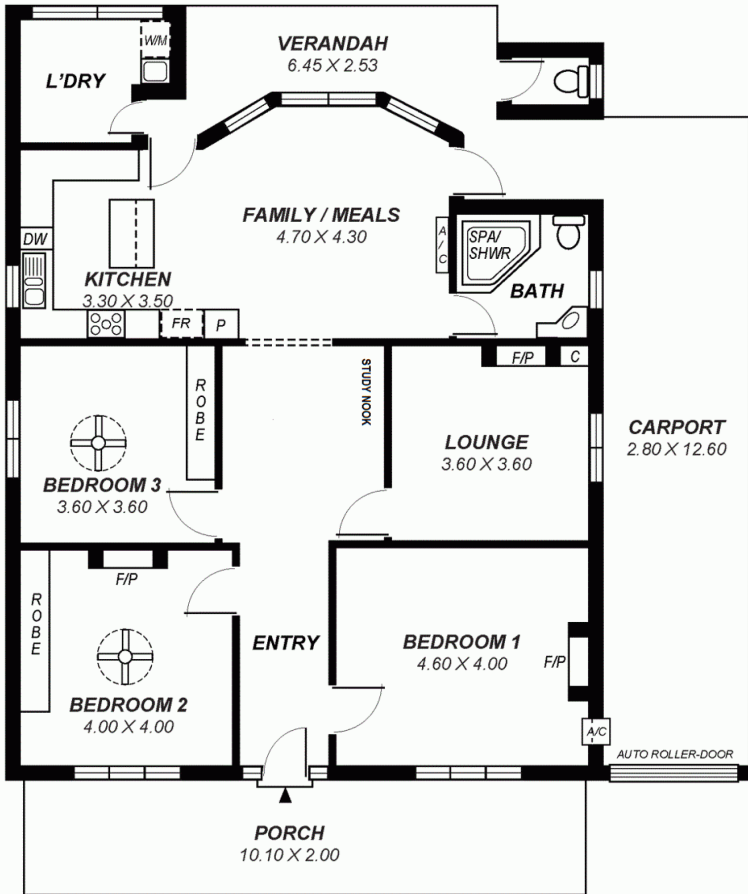
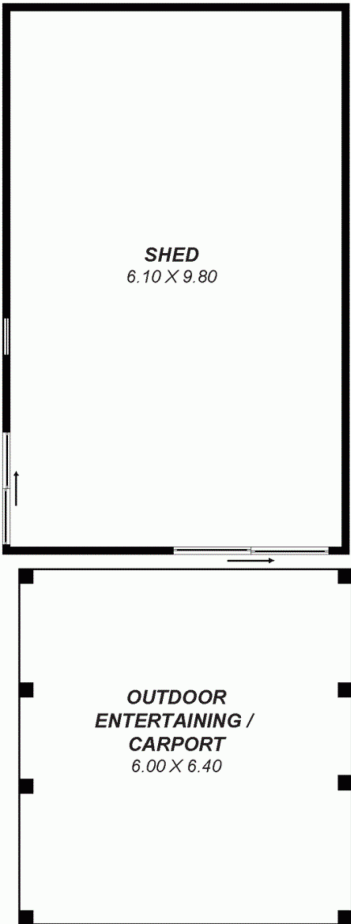
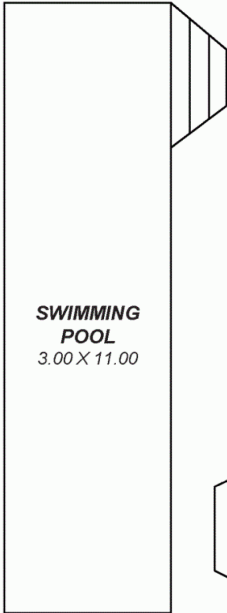
The welcoming verandah offers internal entry to an amazing spacious floor plan of 3 bedrooms, two with built-in robes and master with ornate fire place and a wall unit air conditioner. Centrally located is a wide hallway with

View : <https://www.michaelkris.com.au/sale/sa/western-beachside-suburbs/croydon/residential/house/5834031>



Michael Georgiadis
08 8353 3000

POOL
SHED



This drawing is for illustration purposes only .
All measurements are approximate and details intended
to be relied upon should be independently verified.