



19 Overlander Way SMITHFIELD SA

3  1  1 

This well maintained and secure courtyard home built in 2010 is an excellent opportunity for the investor.

Offering a great floor plan of 3 bedrooms, open plan kitchen living area, 2-way bathroom, separate laundry and a low maintenance yard.

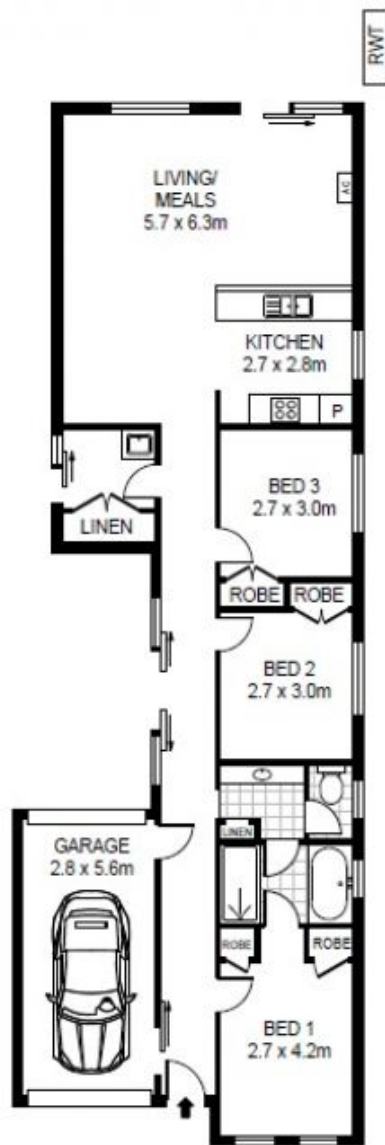
The good-sized bedrooms all have built-in robes and are carpeted in neutral tones. Moving down the passage past the light filled courtyard area to the rear of the home is the spacious and light filled open plan living area comprising of meals area and a modern kitchen with gas cooktop, under bench oven, pantry cupboard, ample bench space with 1 sink which overlooks the living area.

The 2-way bathroom with separate toilet & vanity area with linen cupboard adjoins the master bedroom. There is a

View : <https://www.michaelkris.com.au/sale/sa/north-north-east-suburbs/smithfield/residential/house/5834130>



Kylie Turner
0419 814 844



Scale in metres, indicative only. Dimensions are approximate. All information contained herein is gathered from sources we believe to be reliable. However we cannot guarantee its accuracy and interested persons should rely on their own enquiries.

19 Overlander Way, Smithfield