



## 22 Brimpton Ave MAWSON LAKES SA

4  2  2 

Perfect family friendly accommodation in the popular Shoalhaven Estate of Mawson Lakes. Potential to create a 5th or 6th Bedroom with minor modifications.

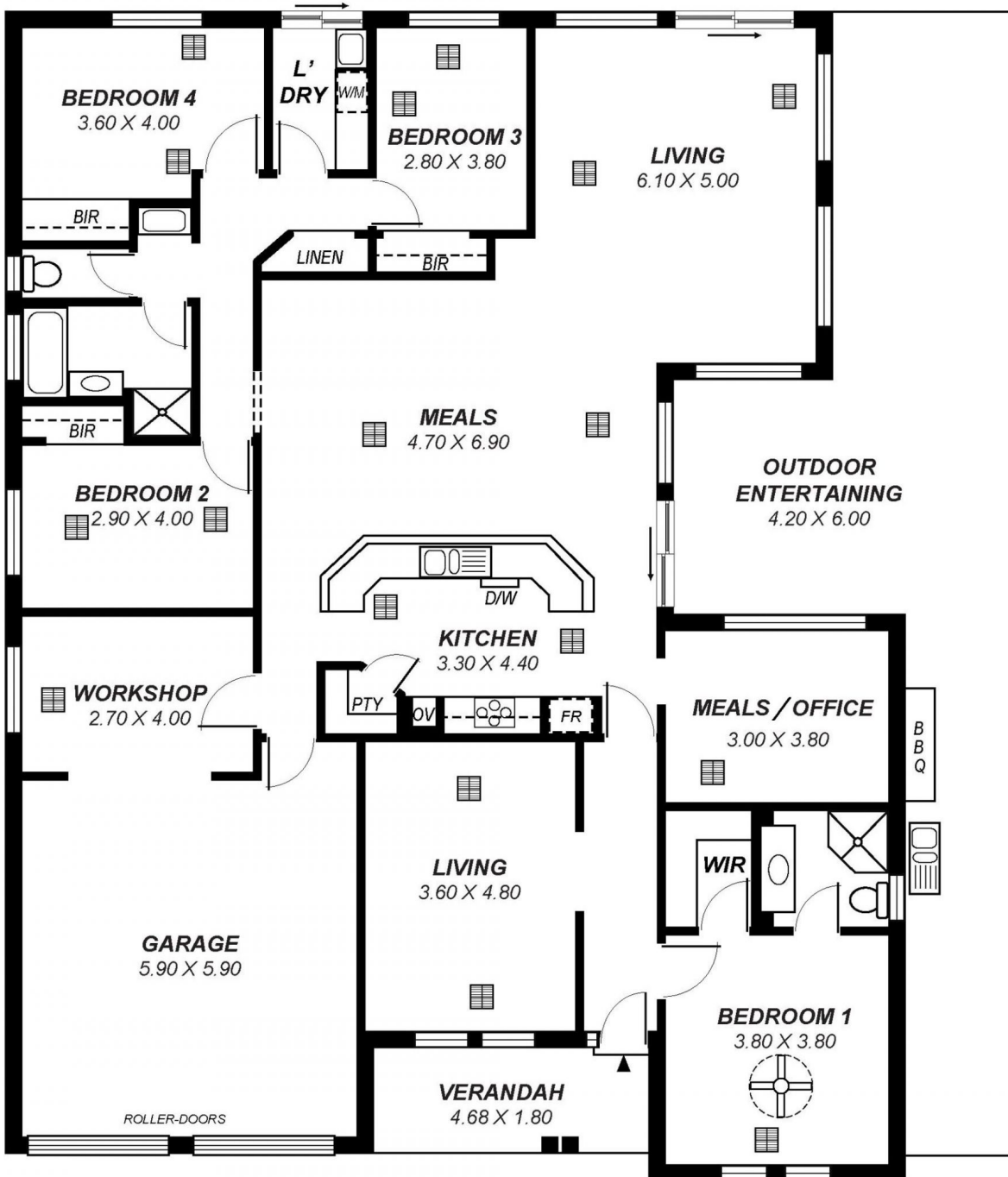
The four bedroom versatile design with two separate living areas offers the space and privacy to accommodate the growing family and suitable for families with children of all ages. The wide open plan casual living area with direct access to the well protected outdoors, creates a space suitable for entertaining large groups, relaxing or hosting family gatherings in comfort and style.

A major feature is the well equipped kitchen with abundance of storage and centralised island breakfast bar. Additionally the grid connected solar power, solar hot water, ducted cooling and ducted gas heating provide energy efficiency and long term savings.

**Building Size** : 285 sqm  
**Land Size** : 550 sqm  
**View** : <https://www.michaelkris.com.au/sale/sa/north-north-east-suburbs/mawson-lakes/residential/house/5834139>



**Matthew Lee**  
**08 8353 3000**



*This drawing is for illustration purposes only .  
All measurements are approximate and details intended  
to be relied upon should be independently verified.*