



137 Hart Street GLANVILLE SA

2  1  2 

Registrations of interest closing Wednesday 31st May 2017 at 5.00pm (unless sold prior).

This cutie will win the hearts of those who are looking to artistically showcase their flare for imagination and design in this fantastic location within walking distance to the beach, close to cafes, restaurants, shopping, popular Semaphore Road and Port Adelaide precinct.

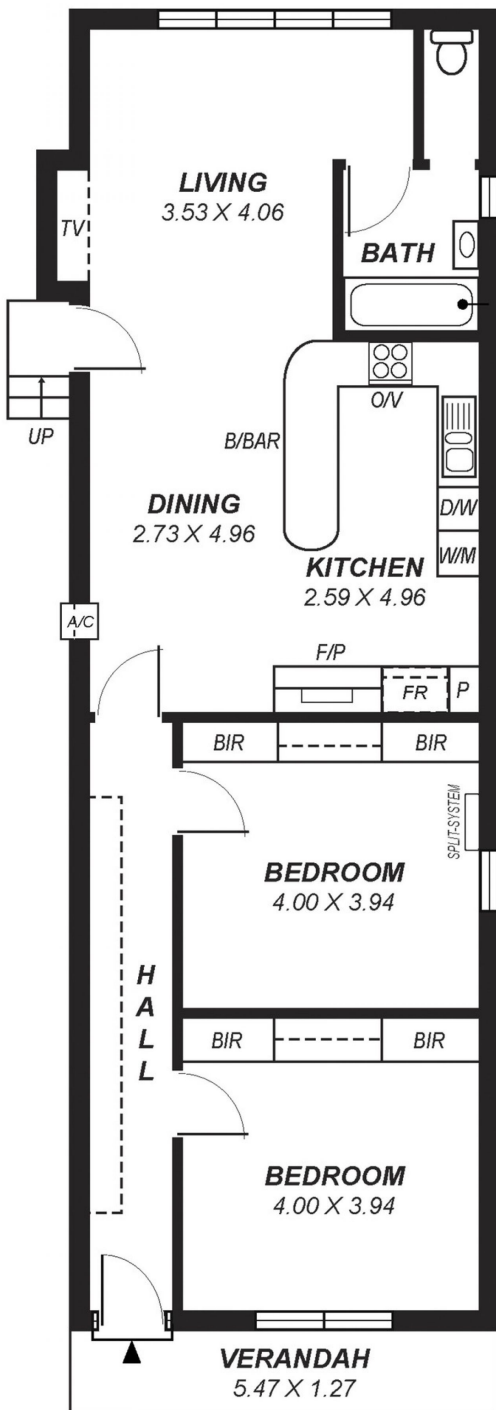
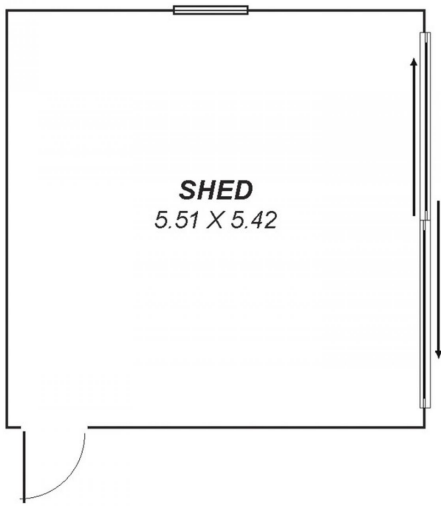
Built C1910 on a generous corner allotment of approximately 464m², this home oozes character throughout with high ceilings, solid timber floors, separate hallway, wrought iron fireplace with mantle, fixtures and fittings in keeping with the homes era.

The home has attractive external corrugated iron cladding, bullnose verandah and cottage style gardens. The internal

View : <https://www.michaelkris.com.au/sale/sa/western-beachside-suburbs/glanville/residential/house/5834162>



Michael Georgiadis
08 8353 3000



*This drawing is for illustration purposes only .
All measurements are approximate and details intended
to be relied upon should be independently verified.*