



### 11A Tamarind Walk ABERFOYLE PARK SA

3  2  2 

This gorgeous two storey home is a real showpiece offering 3 bedrooms, 2 living areas 2.5 bathrooms and a decor to be proud of.

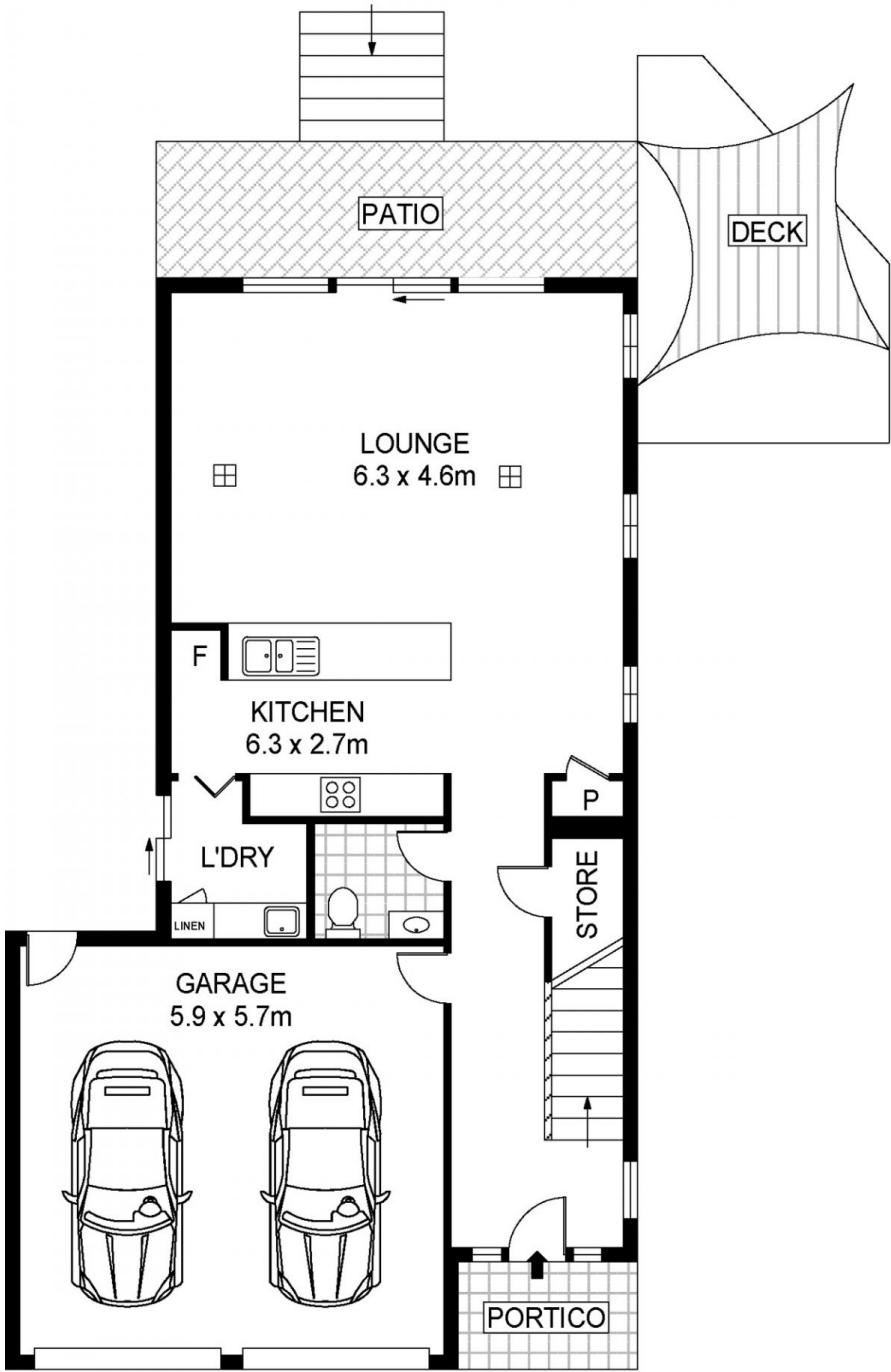
Located in a quiet cul-de-sac with fantastic tree top and Reservoir views makes this home a must see. Only minutes from the Hub Shopping centre, Happy Valley Shopping Centre, Medical Centres, Primary and High Schools, public transport, sporting amenities and so much more.

The floor plan is designed for comfortable family living spanning over two spacious levels. Lower level offers a wide entry hallway leading to the stunning open plan living area comprising quality kitchen facilities with stainless steel appliances, 6 burner gas cook top, built-in microwave, dishwasher, large pantry cupboard and an extra-large

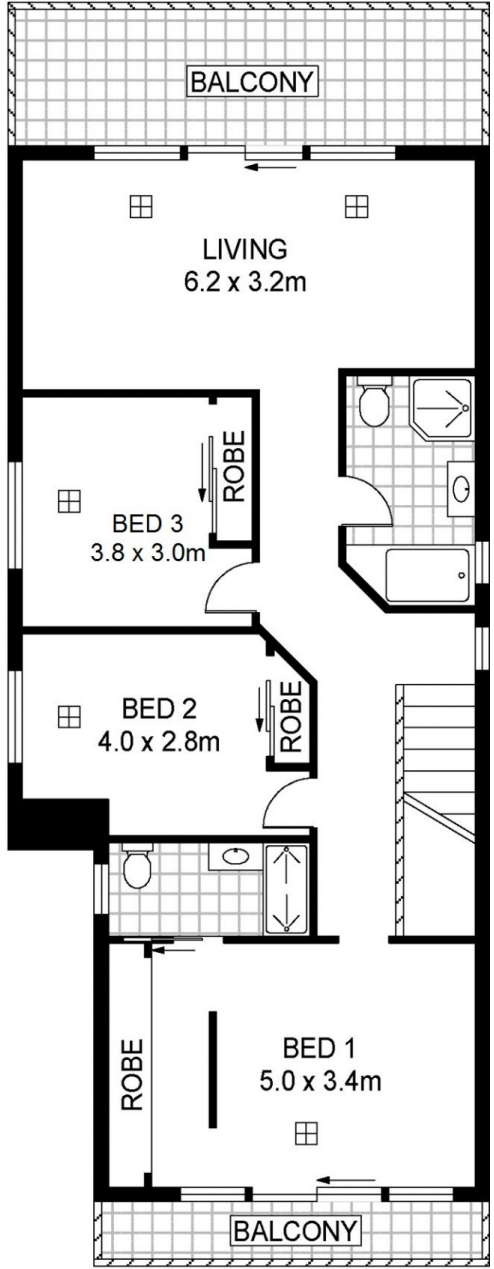
**View :** <https://www.michaelkris.com.au/sale/sa/south-south-east-suburbs/aberfoyle-park/residential/house/5834178>



**Kris Papagiannis**  
08 8353 3000



LOWER LEVEL



UPPER LEVEL



Scale in metres. Indicative only. Dimensions are approximate. All information contained herein is gathered from sources we believe to be reliable. However we cannot guarantee its accuracy and interested persons should rely on their own enquiries

INT : 150m<sup>2</sup>  
GARAGE : 33m<sup>2</sup>

11A Tamarind Walk, Aberfoyle Park