



16 Featherstone Street SMITHFIELD PLAINS SA

4  2  2 

What a fantastic opportunity to own your home. Whether you are a 1st Home Buyer, or an astute investor, this home would be a great buy. Freshly painted and new carpets to bedrooms 2, 3 & 4.

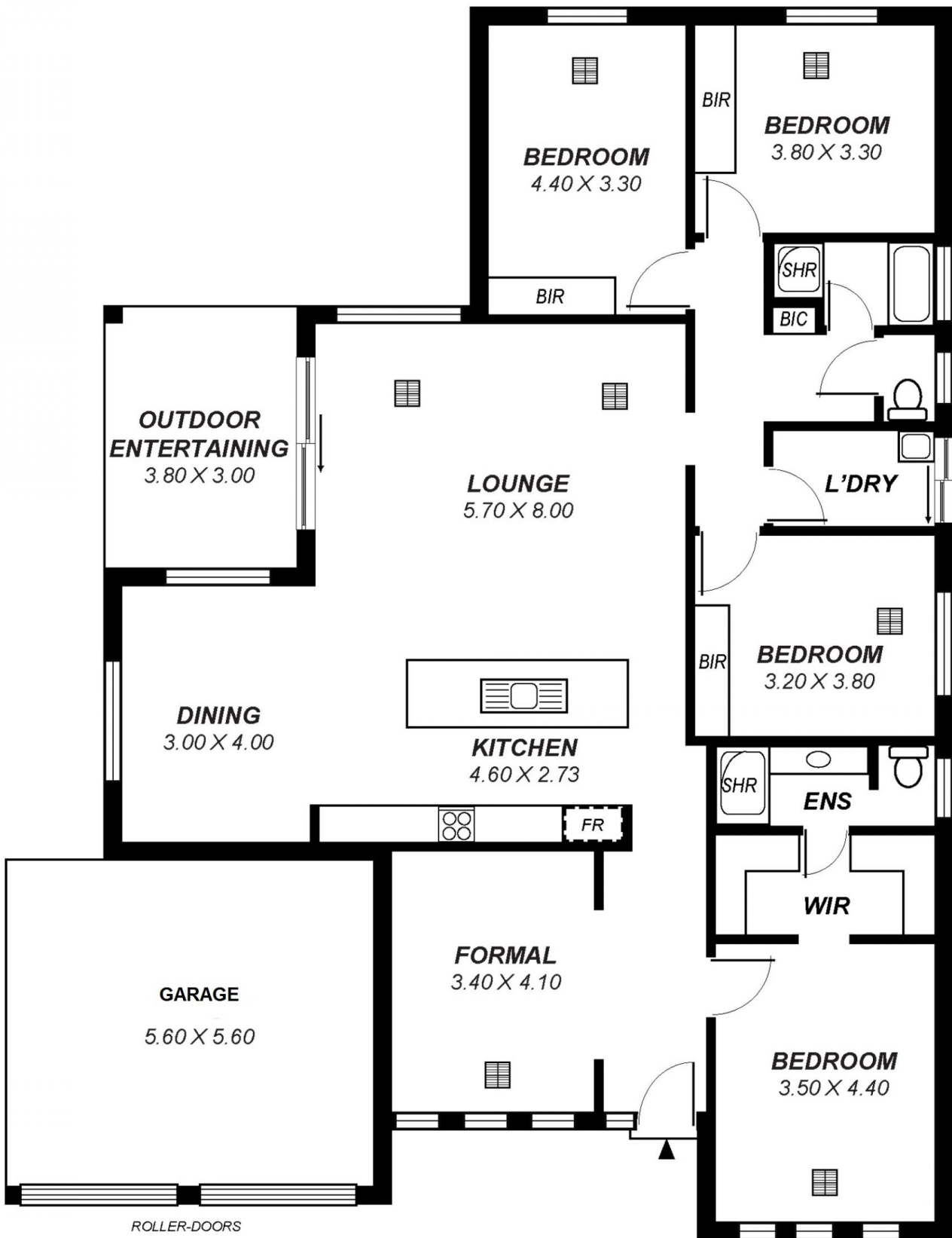
View : <https://www.michaelkris.com.au/sale/sa/north-north-east-suburbs/smithfield-plains/residential/house/5834182>

The home was built in 2012 on a generous allotment of approximately 579m2 within walking distance to Playford Alive Shopping precinct, Munno Para Shopping Centre, schools, buses and the Smithfield Interchange.

The spacious and modern interior will delight, offering 4 bedrooms, master with ensuite and large walk-in robe. And all other bedrooms have built-in mirrored robes. Why not take advantage of the two living areas? Yes, there is a formal lounge plus a delightful open plan living area comprising a beautifully designed kitchen with stainless steel cooking appliances, gas cooktop, dishwasher



Kylie Turner
0419 814 844



ROLLER-DOORS

*This drawing is for illustration purposes only .
 All measurements are approximate and details intended
 to be relied upon should be independently verified.*

Area	m ²
Living:	149.60
Entertaining:	11.40
Carport:	31.36
Total:	192.36