



13 Wattle Avenue DRY CREEK SA

5 🏠 3 🚿 3 🚗

AT A GLANCE: *5 Bedrooms *3 Bathrooms *Study
*Home Theatre *Games Room *In-ground Pool *Open
Plan Living *Multiple Car Parking *Living Area approx
297m2

View : <https://www.michaelkris.com.au/sale/sa/north-north-east-suburbs/dry-creek/residential/house/5834254>

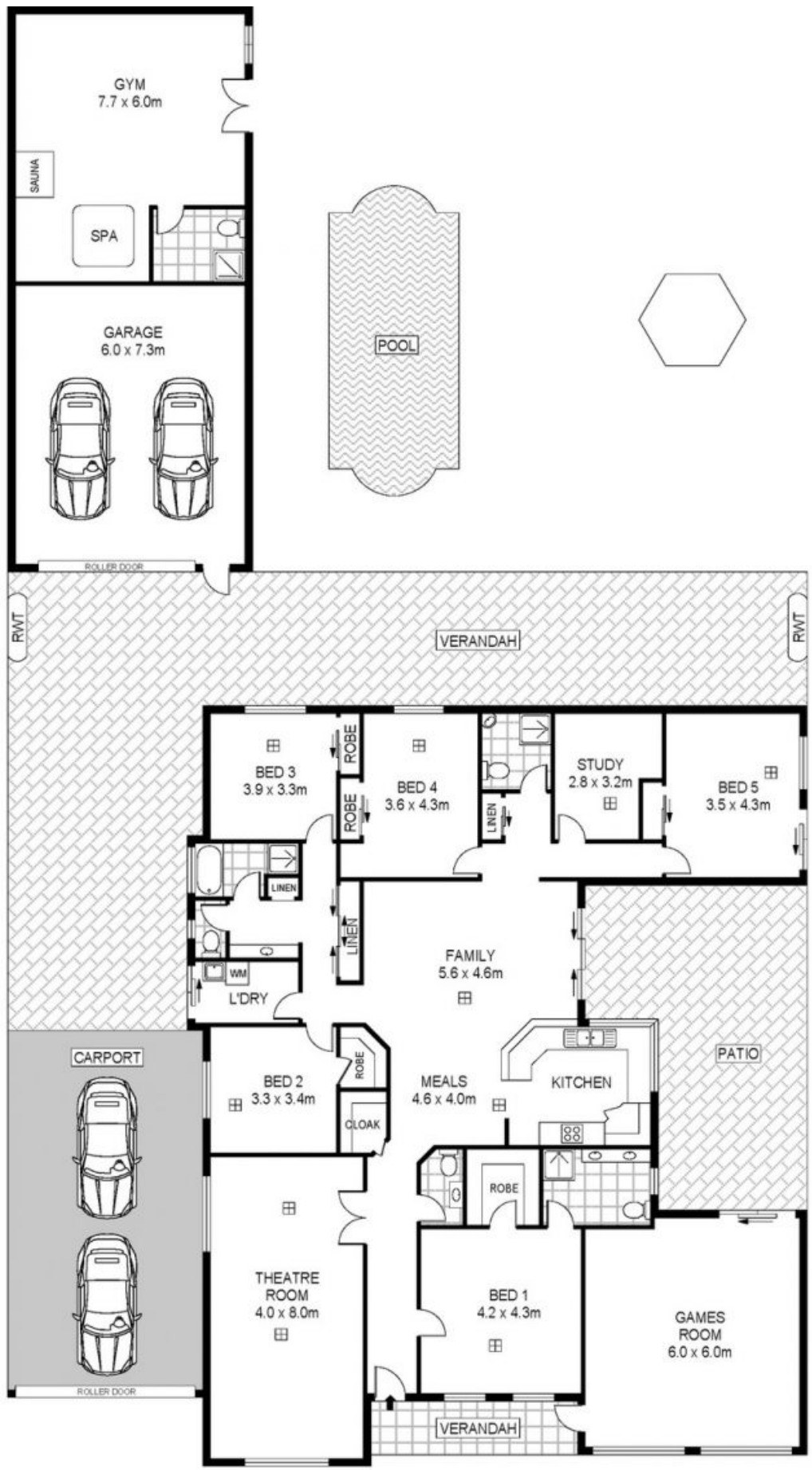
This huge family home is an opportunity not to be missed. Purposely built in 2001 for extended family living in this ever so popular Northern Suburbs District.

The floor plan seems never ending, which means there is plenty of space for family and guests alike. Offering a very attractive faade behind a solid built fence with auto gate entry and lovely landscaped gardens.

The floor plan is never ending, which means there is plenty of space for family and guests alike. Offering 5 bedrooms plus a study, master with ensuite and walk-in robe,



Michael Georgiadis
08 8353 3000



Scale in metres Indicative only. Dimensions are approximate. All information contained herein is gathered from sources we believe to be reliable. However we cannot guarantee its accuracy and interested persons should rely on their own enquiries

INT : 249m²
 GARAGE : 44m²
 GYM : 46m²



13 Wattle Avenue, Dry Creek