



10 Lonsdale Crescent ANDREWS FARM SA

3  2  1 

This delightful home would be ideal for those looking for a great investment, downsizing or 1st home buyers looking to step into property market at an affordable price.

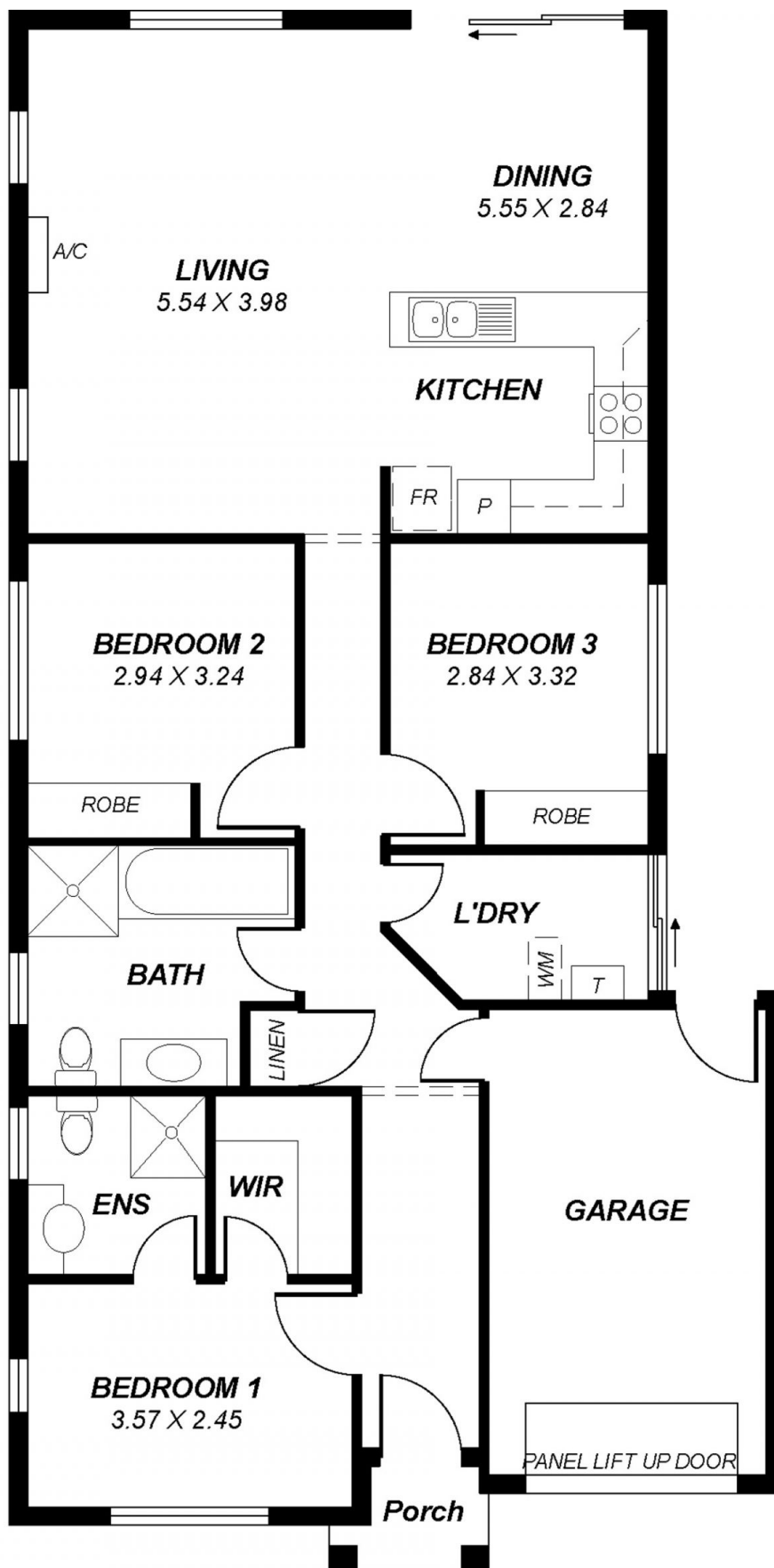
Offering a very comfortable floor plan of 3 bedrooms with built-in robes, master with ensuite and walk-in robe. The separate hallway will lead you the delightful open plan living area comprising the lovely designed kitchen with modern stainless steel appliances including gas cooktop and brand new under bench oven. There are ample built-in cupboards and a good size preparation/breakfast bar overlooking the dining and living areas. The family bathroom is beautifully designed with a bath, shower alcove, vanity, wc and there is a separate laundry.

Other features include ducted evaporate cooling, split system air conditioner, great fixtures and fittings and a

View : <https://www.michaelkris.com.au/sale/sa/north-northeast-suburbs/andrews-farm/residential/house/5834262>



Kylie Turner
0419 814 844



*This drawing is for illustration purposes only.
 All measurements are approximate and details intended
 to be relied upon should be independently verified.*

Area	m ²
Living	108.26
Porch	1.74
Garage	11.61
Total	121.61