






27 Sturt Road BEDFORD PARK SA

8  3  2 

ROOM FOR THE GROWING FAMILY, SUPER LOCATION

Boasting an extremely generous layout with multiple living areas over two levels, this eight bedroom family home with three bathrooms is perfect for a large family.

This home offers scope to accommodate a variety of personal lifestyles and desires. Whether you want space for your growing family, room for your parents or in-laws to live downstairs, or maybe just need the extra income that student accommodation can provide for the wily investor or the retiree looking for a secure long term income stream.

Currently configured with four downstairs bedrooms and bathroom, plus four upstairs bedrooms including a master with walk-in robe and en-suite bathroom, there is also a separate upstairs family room and family bathroom.

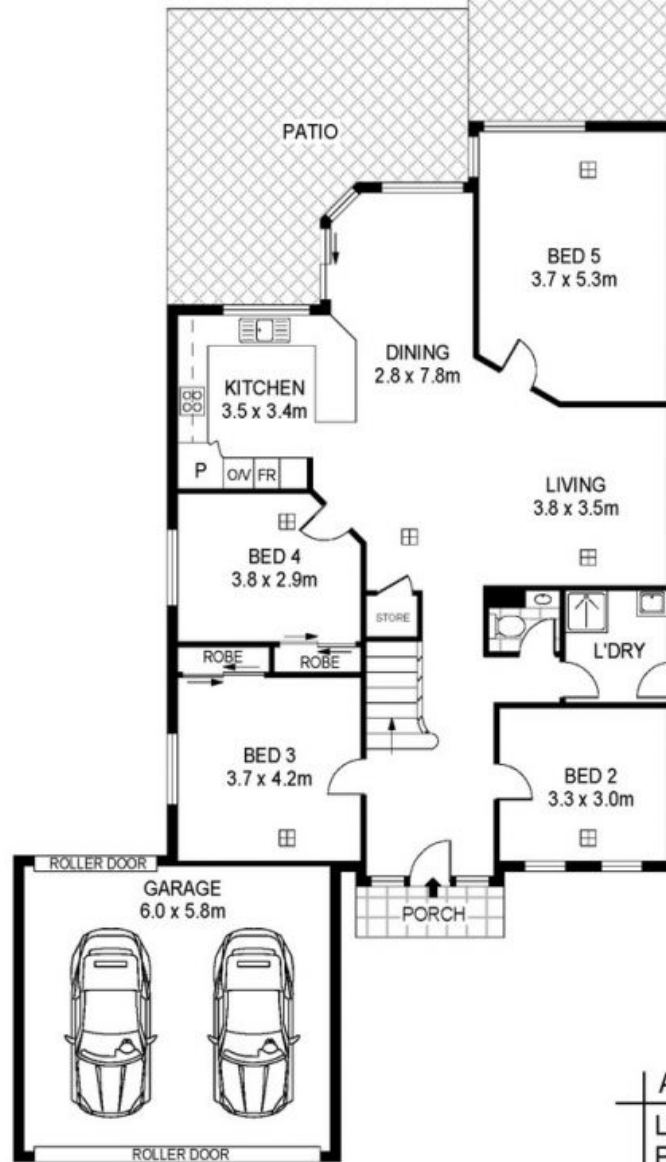
Land Size : 745 sqm
View : <https://www.michaelkris.com.au/sale/sa/western-beachside-suburbs/bedford-park/residential/house/5834291>



Con Papagiannis
08 8353 3000



UPPER LEVEL



LOWER LEVEL

Area	M ²
Living	227
Patio	27
Ent. Area	24
Porch	2
Garage	35
Total	315



Scale in metres. Indicative only. Dimensions are approximate. All information contained herein is gathered from sources we believe to be reliable. However we cannot guarantee its accuracy and interested persons should rely on their own enquiries