



U4, 31 Everard Avenue ASHFORD SA

2  1  1 

This is a fabulous investment opportunity; city fringe location and along term tenant at \$300 per week makes this one hot property for the savvy investor looking to increase their portfolio or an entry point for the 1st home buyer.

View : <https://www.michaelkris.com.au/sale/sa/western-beachside-suburbs/ashford/residential/house/5834332>

Rarely do units of this quality and size come to the market.

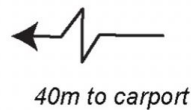
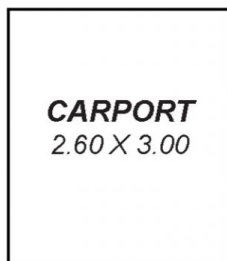
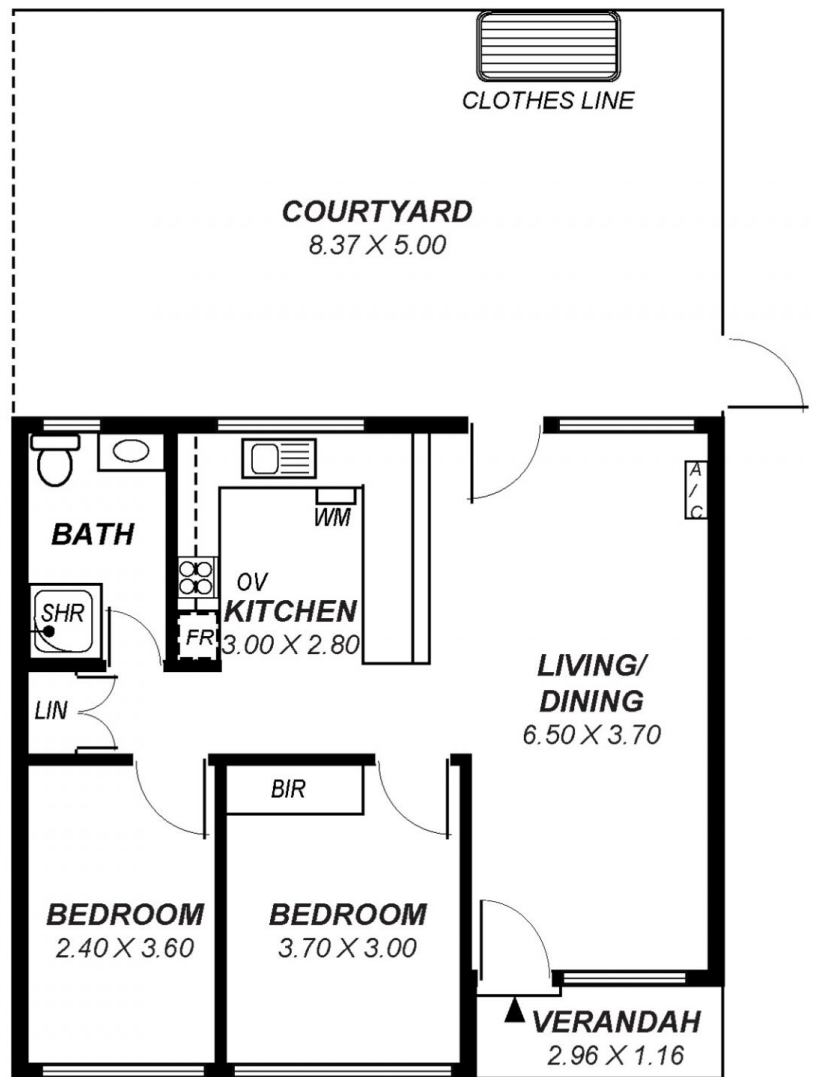
BIGGER THAN MOST AND AMAZING LOCATION!

This superbly presented unit has 2 generous bedrooms and is in a beautifully maintained and well-presented group of 10 units.

Situated on the tree lined Everard Avenue in the Adelaide High School Zone, a ground floor unit at the rear of a small quiet group allowing for utmost privacy and accessibility to



Con Papagiannis
08 8353 3000



*This drawing is for illustration purposes only .
All measurements are approximate and details intended
to be relied upon should be independently verified.*

Area	m ²
Living:	64.66
Carport:	7.80
Courtyard:	41.85
Verandah:	3.43
Total:	117.74