

**53 Hawker Avenue PLYMPTON PARK SA**

3  2  1 

These brand new, beautifully designed, Torrens Titled homes are now ready for you to move in.

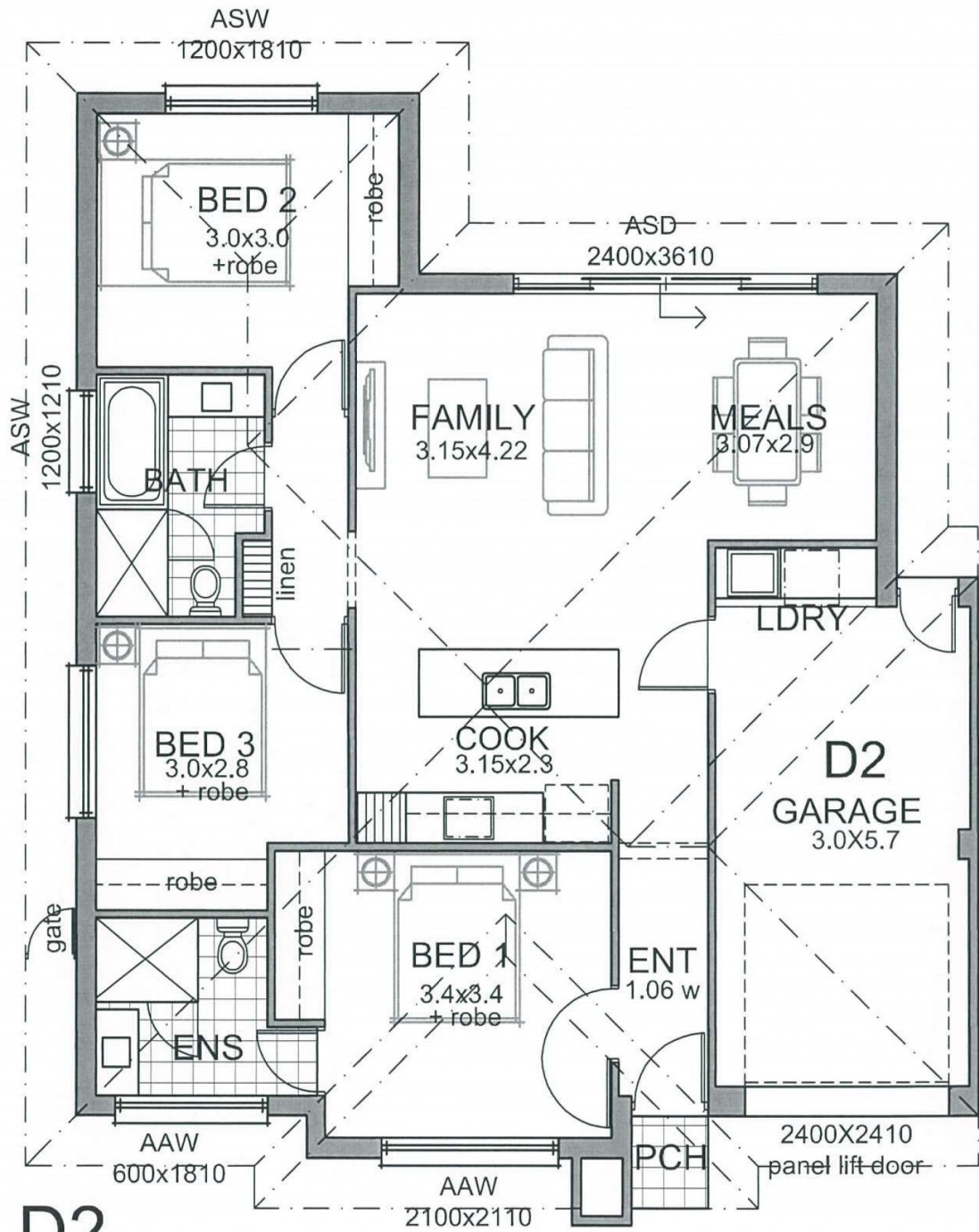
Beautifully appointed, single storey home. Built to the highest standards of quality and finish, with a stylish modern street presence, combined with a spacious floor plan to satisfy today's modern life style, these homes will please the most discerning home owner.

Brand new is certainly special, even more special when these wonderful homes are in a fantastic location like the very desirable suburb of Plympton Park. Located within minutes to beautiful beaches, Glenelg precinct, Westfield Marion, local shopping, quality private and Public schools, public transport and easy commuting to the CBD with enviable access to the tram.

**View :** <https://www.michaelkris.com.au/sale/sa/south-south-east-suburbs/plympton-park/residential/house/5834367>



**Con Papagiannis**  
**08 8353 3000**



## D2 FLOOR PLAN

SCALE 1:100