



48 Selina Street Morphett Vale SA

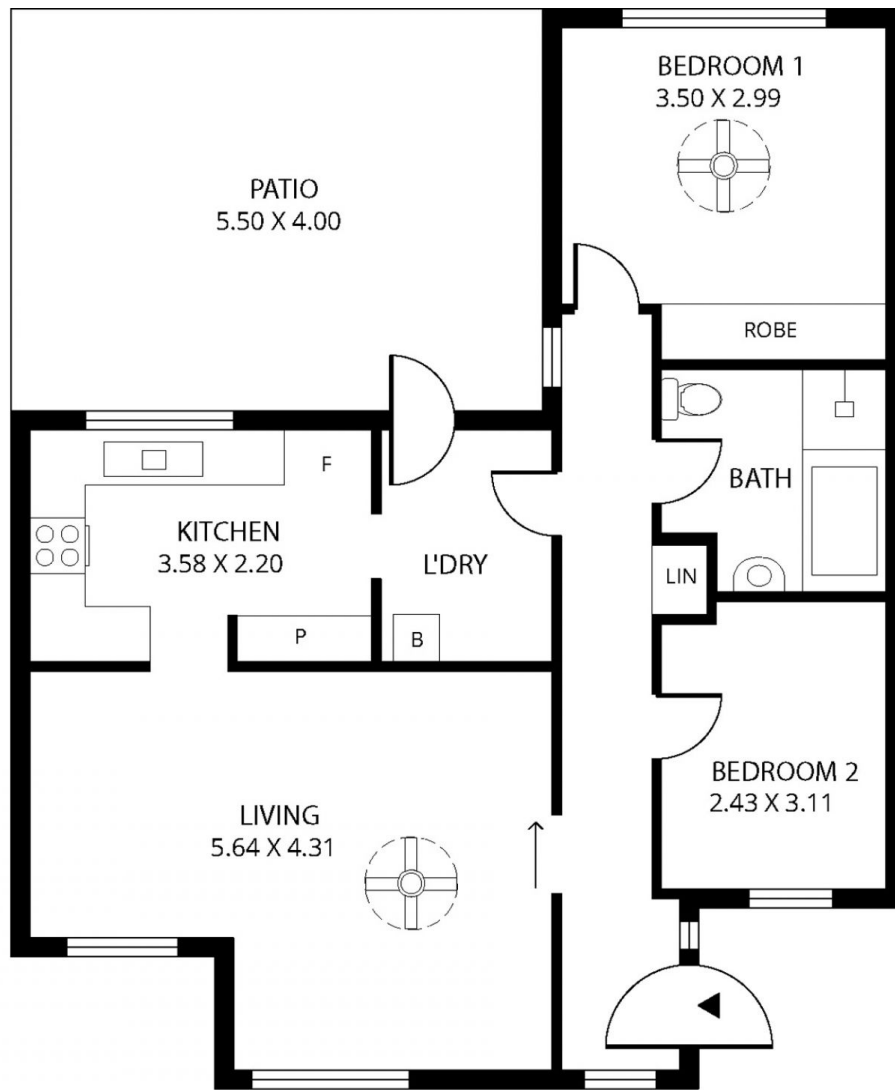
2  1 

This delightful semi-detached maisonette would definitely suit those looking to enter the property market, downsize or a great addition to your rental portfolio. Fabulous location opposite reserve in a no-through road, close to local shopping, public transport and so many other amenities. This home is in immaculate condition both inside and out.

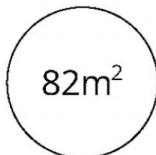
View : <https://www.michaelkris.com.au/sale/sa/south-south-east-suburbs/morphett-vale/residential/house/5834426>

Offering a lovely floor plan featuring two good size bedrooms, master with built-in mirrored robe and ceiling fan, central hallway and a very generous size living/dining room with ceiling fan. The adjacent kitchen has plenty to offer including gas upright cooker, ample built-ins including a good size pantry cupboard. The spacious main bathroom is centrally located and comprises a bath, separate shower alcove, vanity and toilet.

Other features include stunning polished timber flooring



TOTAL



Living



Shed

Scale in metres. This drawing is for illustration purposes only. All measurements are approximate and details intended to be relied upon should be independently verified.

Produced by **The Fotobase Group**