




**202 Trimmer Parade SEATON SA**

4  3  4 

**AT A GLANCE:** \* MAIN HOME WITH 3 BEDROOMS & OPEN PLAN LIVING \* REAR HOME CAN BE CONVERTED INTO 2 UNITS (subject to approvals). KITCHENETTE, BATHROOM & EXTRA LARGE GARAGE/STORAGE AREA

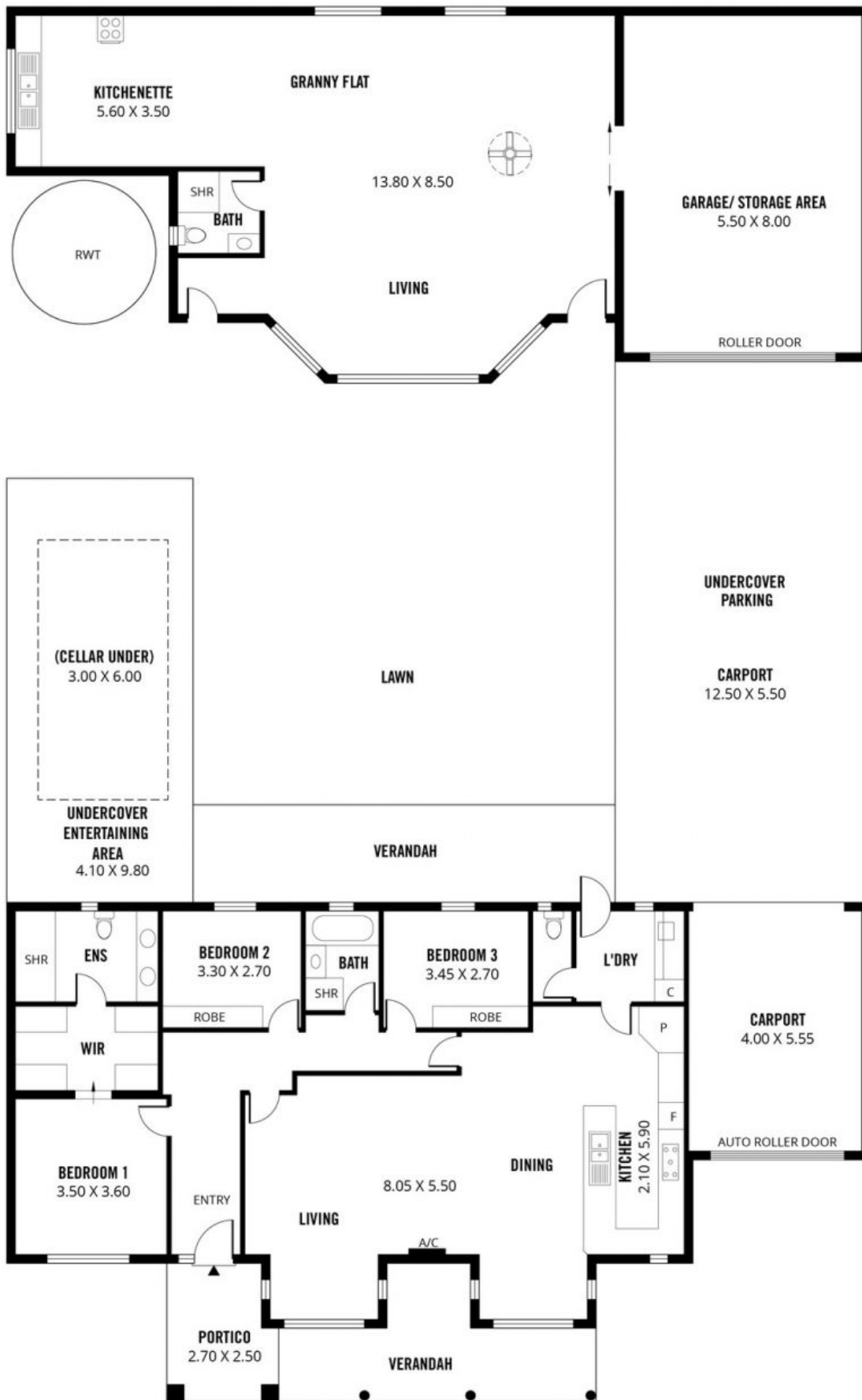
**Price** : \$ 645,000  
**Land Size** : 800 sqm  
**View** : <https://www.michaelkris.com.au/sale/sa/western-beachside-suburbs/seaton/residential/house/5834500>

YES, this property has two homes on a generous allotment of approximately 800sqms. The location is fabulous, situated on the Western side of Tapleys Hill Road, directly opposite the Royal Adelaide Golf Course, only minutes from Westfield West Lakes Shopping Centre, glorious beaches, great selection of public/private schools and public transport at your door step.

If you have been searching for that special home where you can accommodate an extended family or two, then take our word for it "this property would be a brilliant buy",



**Anthony Decelis**  
**08 8353 3000**



Scale in metres. This drawing is for illustration purposes only. All measurements are approximate and details intended to be relied upon should be independently verified.

Produced by **The Fotobase Group**