



10 Sunset Crescent GRANGE SA

2  1  1 

This is a fabulous opportunity for the first home buyer, investor or downsizer to acquire a real gem in this wonderful location close to public and private schools, Westfield West Lakes, beautiful beaches, public transport, 5 minute walk to train station and easy commuting to Glenelg and the CBD.

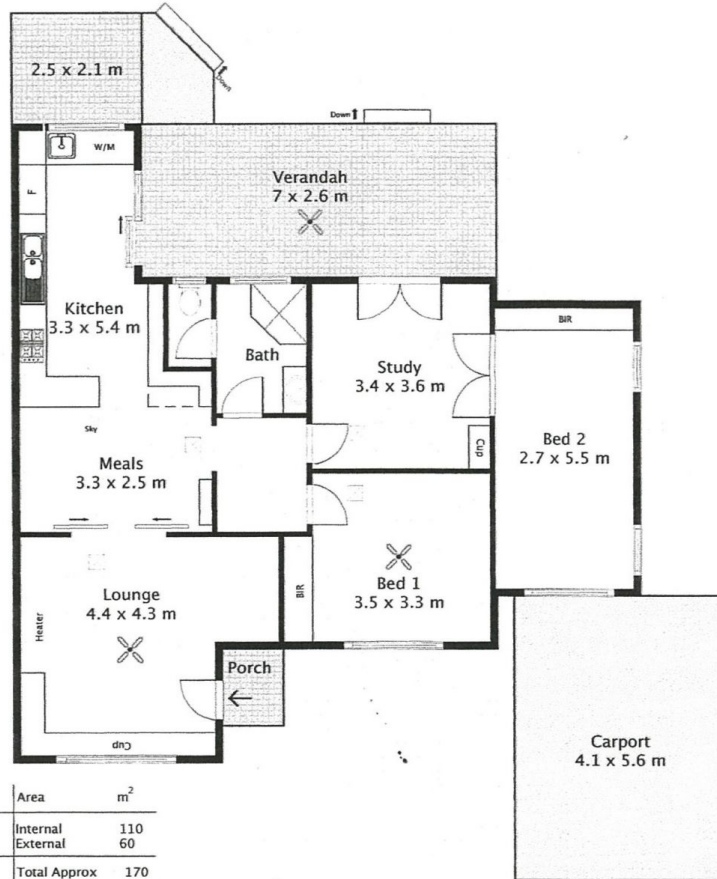
Land Size : 409 sqm
View : <https://www.michaelkris.com.au/sale/sa/western-beachside-suburbs/grange/residential/house/5834506>

This Torrens Title home has been updated and well maintained, offering plenty of space for entertaining. The versatile floor plan comprises two generous size bedrooms with built-in robes with the option to convert the spacious study/2nd living room to bedroom 3. The main living areas showcase a wonderful ambiance of warmth, natural light and space. The separate lounge room has a large picture window, built-in storage cupboards, gas heater, ceiling fan, stunning polished timber flooring and sliding door access to the open plan kitchen/dine. The JAG kitchen offers an



Kris Papagiannis
08 8353 3000

Shed
1.5 x 2.3 m
(Not in position)



Disclaimer: All measurements are approximate only

10 Sunset Crescent, GRANGE

Year Built: 1961
 Land Size: 409m² (approx)
 Council Rates: City of Charles Sturt