



29 Shelley Avenue NETLEY SA

4  2  1 

AT A GLANCE: * 4 Bedrooms * 2 Bathrooms * Formal Lounge * Rumpus Room with Bar * Self-contained Granny Flat or rental opportunity * Carport * Dual Driveways * 630m2 Allotment

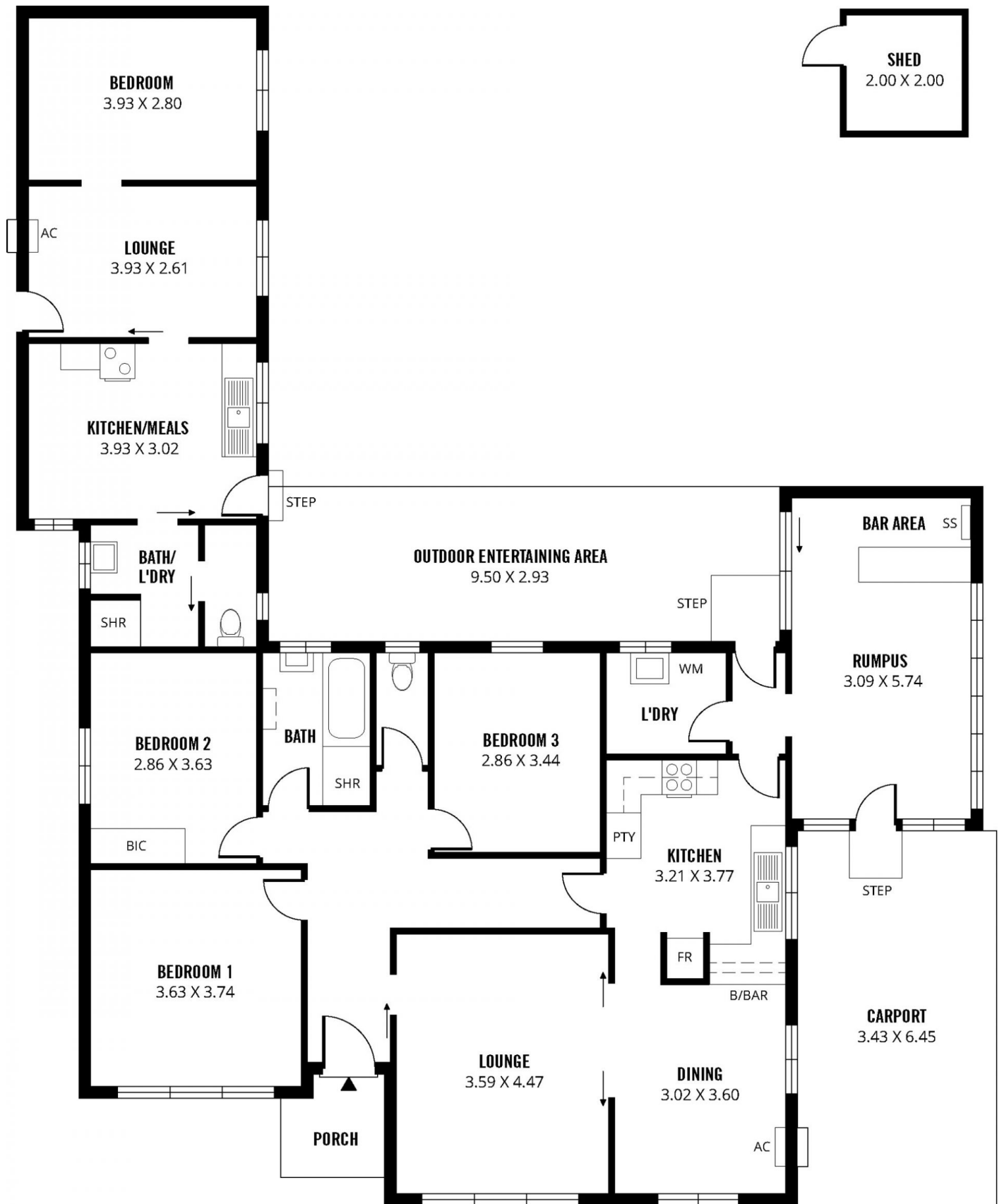
Building Size : 233 sqm
Land Size : 630 sqm
View : <https://www.michaelkris.com.au/sale/sa/western-beachside-suburbs/netley/residential/house/5834523>

When opportunities like this arise, HESITATION COULD DISAPPOINT! Lovingly cared for since the early 1960's, this very spacious family home offers some 233m2 of living space and a very generous allotment of approximately 630m2, giving the opportunity to sub-divide now or in future years (STCC).

The location is splendid; within close proximity to public transport, 10 minute drive to the CBD and western beaches, a short distance to local shopping on Henley Beach Road and within easy reach of Harbor Town, Adelaide Airport and Elite Public and Private schools.



Kris Papagiannis
08 8353 3000



233m²

TOTAL

177m²

Living

5m²

Shed

22m²

Carport

3m²

Porch

26m²

Outdoor
Entertaining

Scale in metres. This drawing is for illustration purposes only. All measurements are approximate and details intended to be relied upon should be independently verified.

Produced by **The Fotobase Group**