



48 Wattle Ave ROYAL PARK SA

3  1  1 

Centrally located in Royal Park is this gem, the retro style will impress those looking for a character home between the city and the sea, close to Westfield West Lakes, public and private schools, childcare centres, parks and public transport.

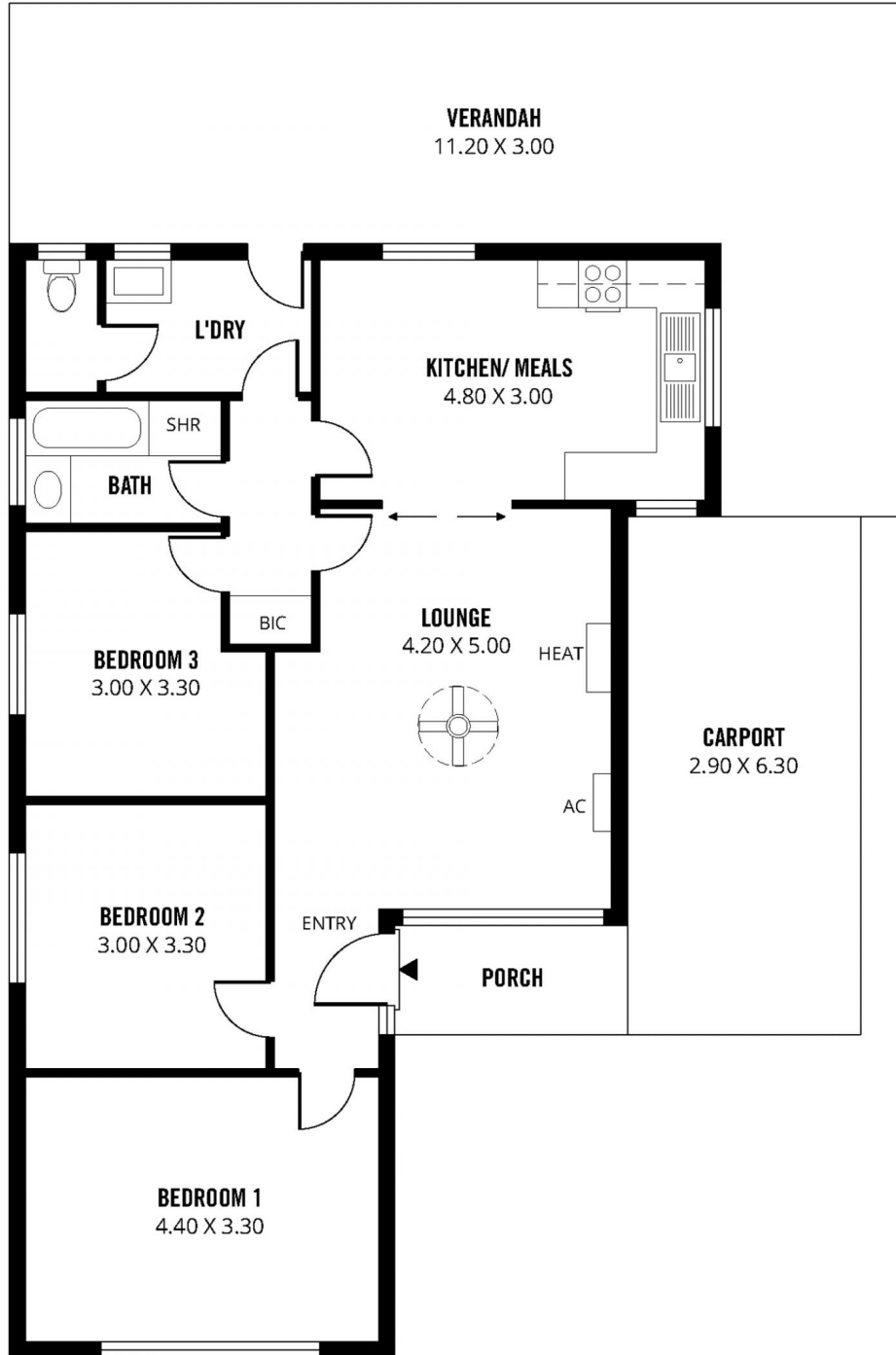
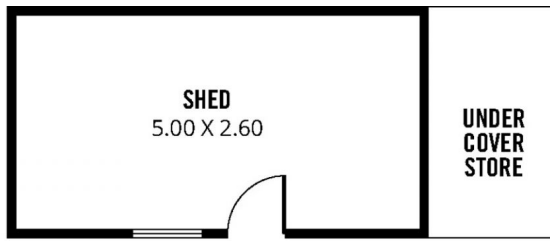
View : <https://www.michaelkris.com.au/sale/sa/western-beachside-suburbs/royal-park/residential/house/5834559>

You must come inside to appreciate the spacious floor plan of 3 generous size bedrooms, large lounge room with gas heater, wall unit reverse cycle air conditioner and ceiling fan. The delightful kitchen/meals has ample built-in cupboards and bench space, gas upright stove, spacious dining area and has direct access from the lounge room, making it very convenient for families with children or entertaining.



Kris Papagiannis
08 8353 3000

The main bathroom comprising full size bath, separate shower, vanity and the convenience of a separate toilet



172m²

TOTAL

95m²

Living

13m²

Shed

18m²

Carport

4m²

Porch

42m²

Verandah