



7 Byron Avenue CLOVELLY PARK SA

3  1  1 

If you are looking for a low maintenance home conveniently located to the Mitchell Park Railway Station & Tonsley Campus, which are within walking distance, plus some of the best public and private schools, Flinders Uni, Flinders Medical Centre and Westfield Marion are only a short drive away, make sure you register to inspect this gorgeous home.

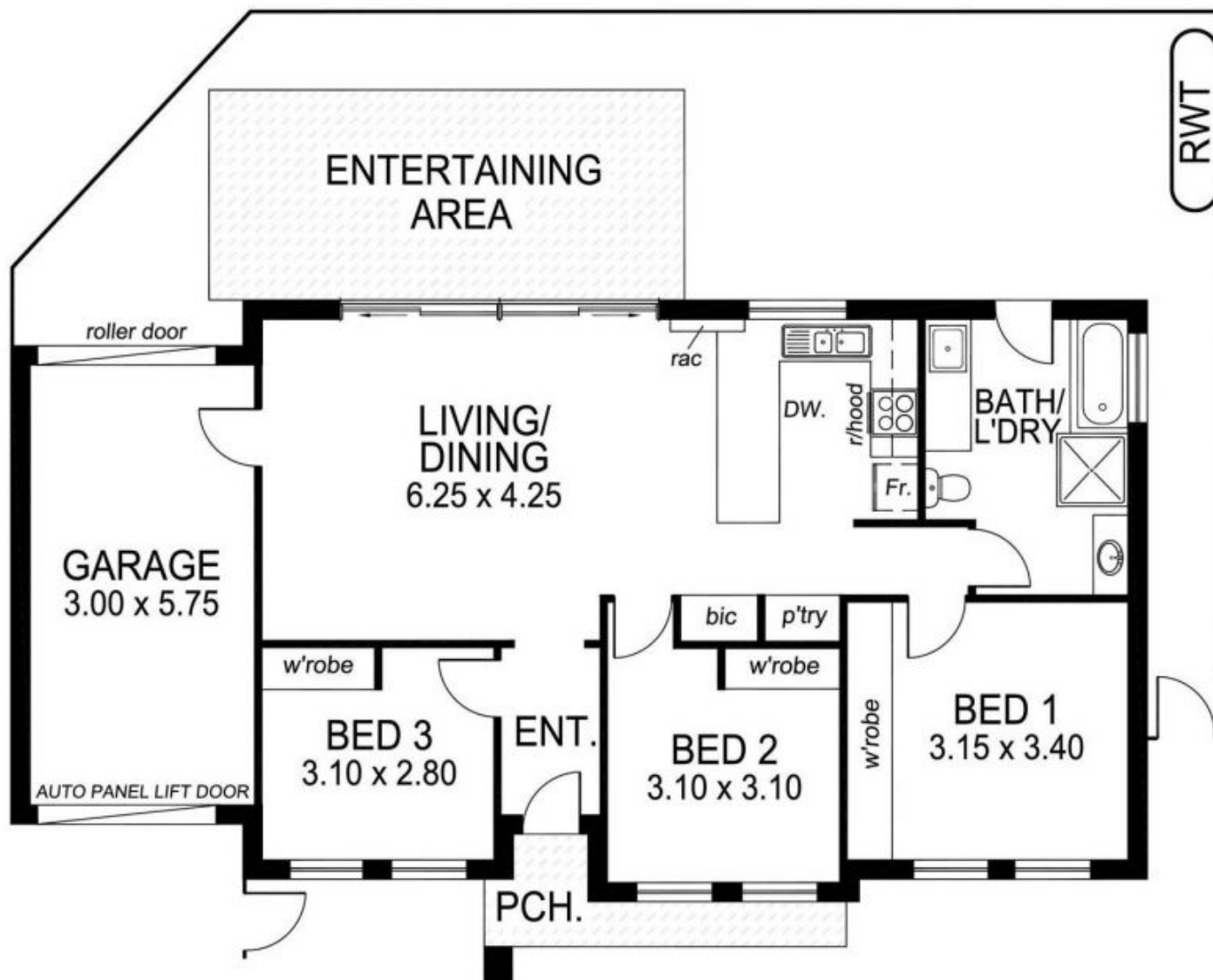
The home is set in a quiet group of 3 with its own private/rear courtyard.

Offering 3 good size bedrooms, all with built-in robes and external roller shutters. The light-filled open plan living area is just gorgeous comprising of a very modern kitchen with quality appliances, gas cooktop, dishwasher, plenty of built-in cupboards and bench space including a good size breakfast bar overlooking the delightful ding and living

View : <https://www.michaelkris.com.au/lease/sa/south-south-east-suburbs/clovelly-park/residential/house/5834560>



Claudia Rundell
0883533000



TOTAL AREA:	115.84m ² /12.45sqs
(Estimate only)	(incl. porch & garage)

This drawing is for illustration purposes only.
 All measurements are approximate only and information
 intended to be relied upon should be independently verified.