

56 Maple Avenue ROYAL PARK SA

4  2  2 

Price Guide \$535,000 - \$550,000

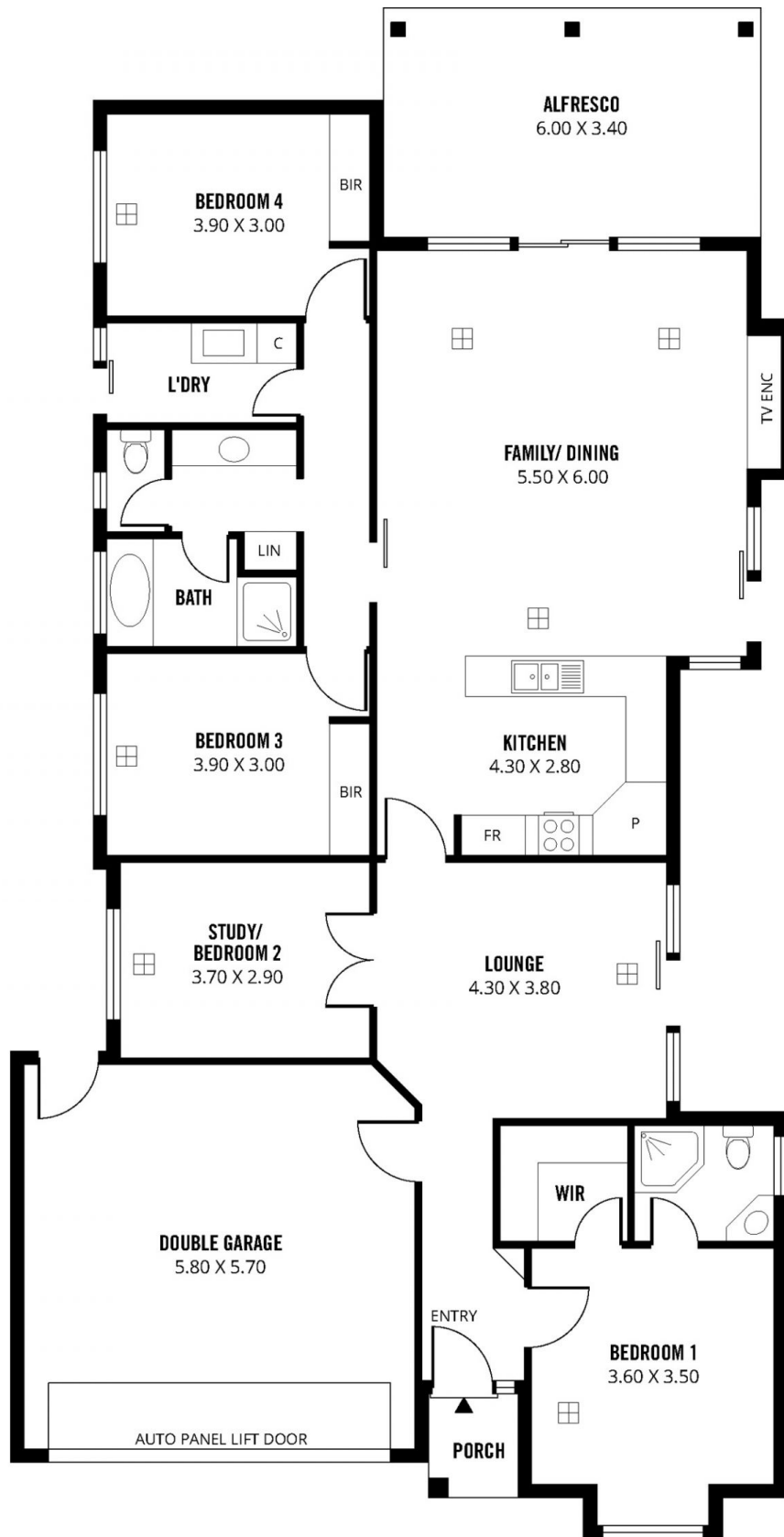
The location is the best, close to Westfield West Lakes, public and private schools, public transport and stunning beaches.

This modern Torrens Title home was built in 2012 on a generous allotment of approximately 372m² offers a fantastic floor plan of up to 4 bedrooms (two with built-in robes), or 3 plus study, master with ensuite and walk-in robe. The home has 2 living areas, lounge with courtyard access and a very spacious open plan living area with a quality designed kitchen with stainless steel appliances, gas cooktop, under bench oven, dishwasher, walk-in pantry and a large preparation bench/breakfast bar with double bowl sink. The adjacent meals and family areas will more than please those looking for a substantial family home.

View : <https://www.michaelkris.com.au/sale/sa/western-beachside-suburbs/royal-park/residential/house/5834630>



Kris Papagiannis
08 8353 3000



216m²

TOTAL

157m²

Living

20m²

Alfresco

37m²

Garage

2m²

Porch

56 MAPLE AVENUE, ROYAL PARK

Scale in metres. This drawing is for illustration purposes only. All measurements are approximate and details intended to be relied upon should be independently verified.

Produced by **The Fotobase Group**