






## 27 Martins Road SALISBURY DOWNS SA

4  1  4 

Extensively renovated 4 bedroom home on a 601 sqm allotment featuring a party sized outdoor entertaining area, lots of room for the kids to play on the lush green lawn, plenty of off-street parking and a huge tradies garage to work from home, set up your man cave or a place to securely store the big boys toys.

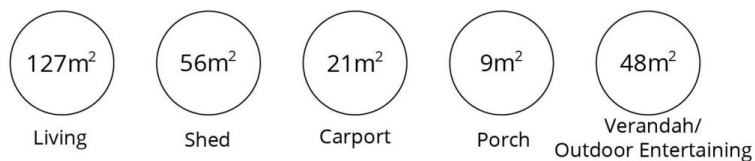
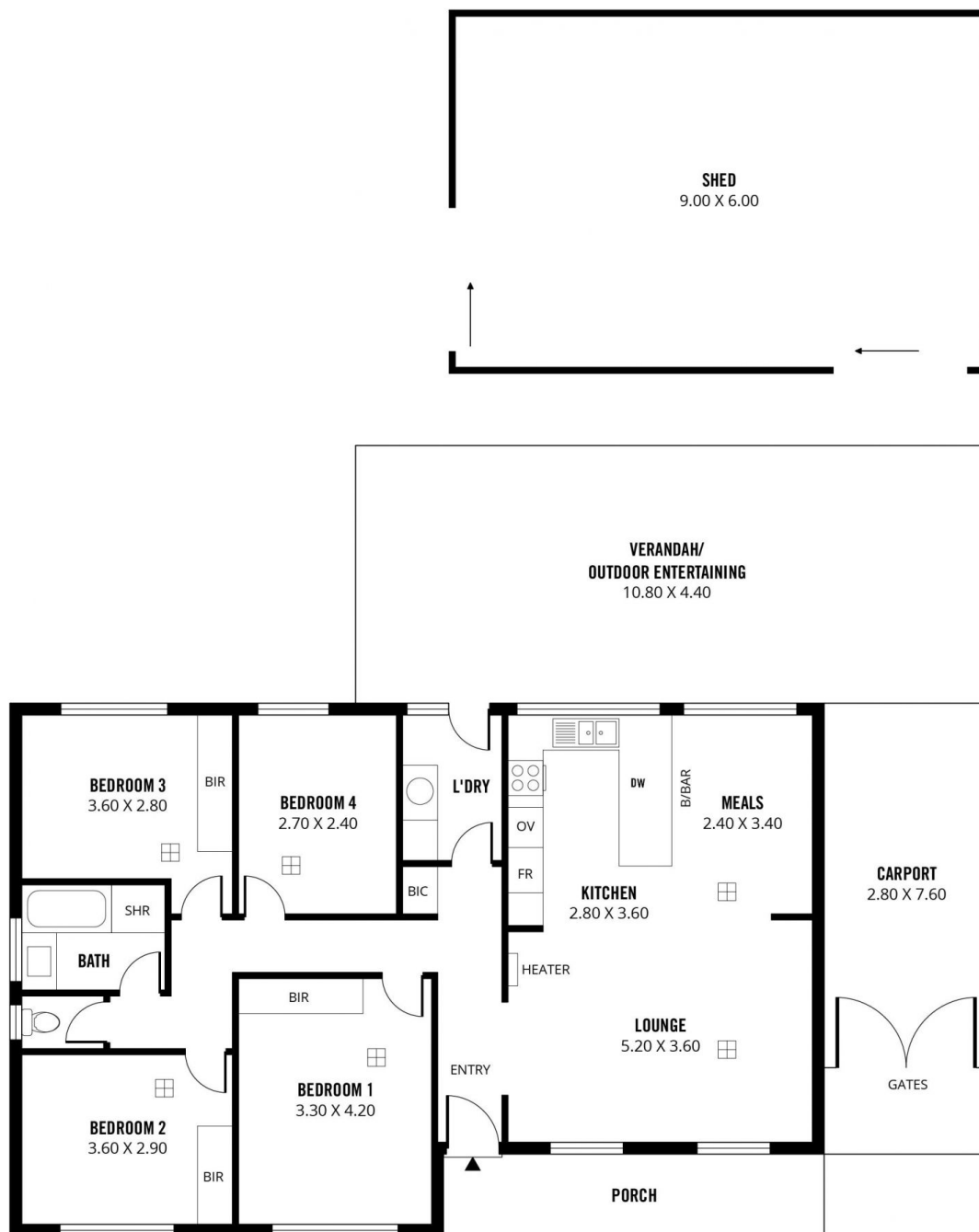
The residence is packed with modern features, professionally renovated to a high standard, is light, bright and offers that new home feeling with a touch of luxury, at an affordable price.

The popular family friendly location has so much to offer. Situated on the slip-road within walking distance to Hollywood Plaza Shopping Centre, public transport, Little Para Linear Park and walking trails. In addition there's a selection of schools in the immediate area and the CBD is

**Building Size** : 127 sqm  
**Land Size** : 601 sqm  
**View** : <https://www.michaelkris.com.au/sale/sa/north-north-east-suburbs/salisbury-downs/residential/house/5834632>



**Matthew Lee**  
08 8353 3000



**27 Martins Road, Salisbury Downs**

Scale in metres. This drawing is for illustration purposes only. All measurements are approximate and details intended to be relied upon should be independently verified.

Produced by **The Fotobase Group**