



13 Westmoreland Road GRANGE SA

4  1  1 

PRICE GUIDE: \$850,000

Set on a generous size allotment of approximately 755m² with a wide frontage of 21.34m. The prime location is grand, a few minutes' drive to Grange beach, walking distance to Grange Primary School, St Michael's College, nearby Golf Clubs, local shopping on Grange Road and bus and train transport nearby.

The spacious floor plan will certainly impress those looking for a true family home with modern amenities and many lifestyle pleasures.

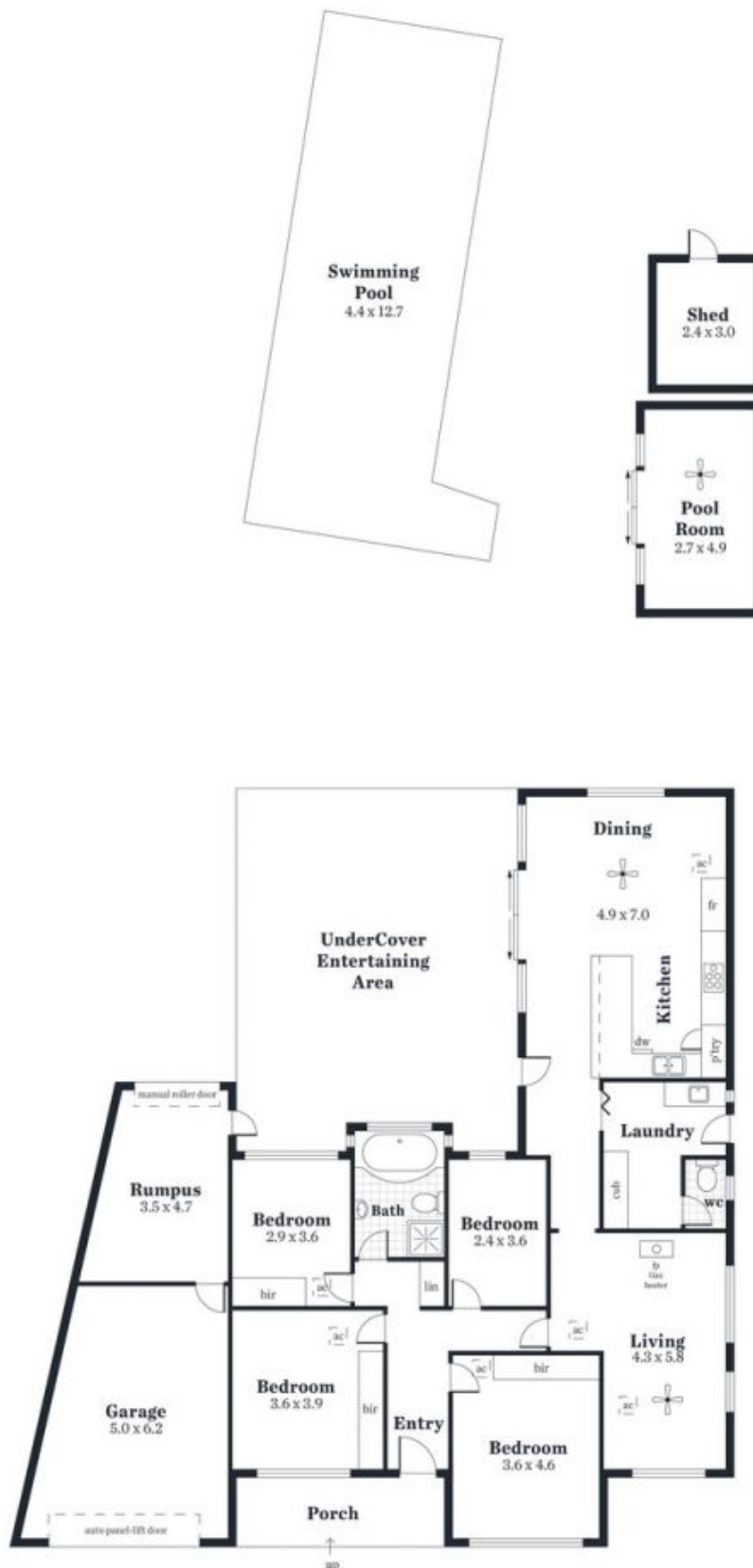
The home has been updated and immaculately maintained showcasing quality and style throughout. Offering 4 good size bedrooms, 3 with built-in robes. The beautiful updated open plan living area will certainly meet all your needs from

Land Size : 755 sqm

View : <https://www.michaelkris.com.au/sale/sa/western-beachside-suburbs/grange/residential/house/5834635>



Kris Papagiannis
08 8353 3000



Area (Estimate Only)	
Living	171.98 m ²
Garage	27.28 m ²
Porch	8.67 m ²
Entertaining Area	60.00 m ²
Pool Room	13.22 m ²
Shed	7.20 m ²
Total	288.35 m²

