



Unit 2, 6 Romney Road HEATHPOOL SA

2  1 

A blank canvas ready to add your own personal touches.

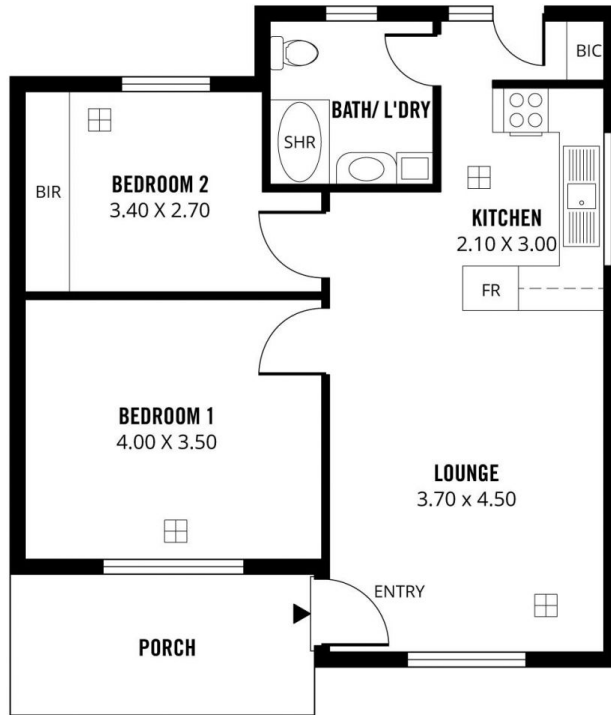
A classic 1960's solid brick unit with plenty of potential. Most of the 2 bedroom unit remains in its original condition, however a few improvements have been undertaken by the current owner over the previous year's including installing a ducted reverse cycle air-conditioner and replacing the hot water service. Unit 2 is a street facing unit within a quiet group of only 5 single storey units and has its own rear yard and small courtyard area.

There's plenty of options here, either buy to renovate immediately then reap your rewards, add to your investment portfolio, or what a perfect opportunity to buy an affordable home to live-in today then add your own personal touches when the time is right. Alternatively this would be an ideal choice for those considering downsizing

Building Size : 73 sqm
View : <https://www.michaelkris.com.au/sale/sa/eastern-suburbs/heathpool/residential/unit/5834643>



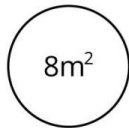
Matthew Lee
08 8353 3000



TOTAL



Living



Porch

UNIT 2/6 ROMNEY ROAD, HEATHPOOL

Scale in metres. This drawing is for illustration purposes only. All measurements are approximate and details intended to be relied upon should be independently verified. Produced by **The Fotobase Group**