



26 Highfield Drive ABERFOYLE PARK SA

5 🚗 3 🚗 2 🚗

This amazing home is located in a quiet cul-de-sac on a 900m² allotment. The home spans over 3 spacious levels in the wonderful Woodland Ridge Estate, surrounded by other quality homes, stunning views to the coast within minutes to quality private and public schools, kindergartens, sporting amenities, local shopping at Aberfoyle Park, Flagstaff Hill and Blackwood and only a short drive to Westfield Marion, Flinders Medical Centre and Flinders University.

Entry into the home leads to the enormous tiled living space with fireplace and access to the 16m wide balcony showcasing stunning views. This level also has a huge timber kitchen with stainless steel cooking appliances, 5 burner gas stove, 900mm wide oven, dishwasher, extra wide fridge space, walk-in pantry and an abundance of built-in storage cupboards including under stair storage,

View : <https://www.michaelkris.com.au/sale/sa/south-south-east-suburbs/aberfoyle-park/residential/house/5834650>



Michael Georgiadis
08 8353 3000



LOWER LEVEL
APPROX. FLOOR
AREA: 117.25 SQ.M
(1281 SQ.FT.)



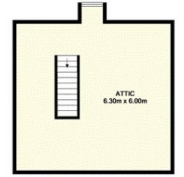
SELF-CONTAINED APARTMENT
APPROX. FLOOR
AREA: 188.82 SQ.M
(2058 SQ.FT.)



UPPER LEVEL
APPROX. FLOOR
AREA: 115.12 SQ.M
(1252 SQ.FT.)

TOTAL APPROX. FLOOR AREA: 419.85 SQ.M (4533 SQ.FT.)

Where areas shown have been made to indicate the accuracy of the floor plan, construction, measurements, and other details, shown on this plan, shall be deemed to be approximate and not intended to be a contract. The contractor shall be responsible for the accuracy of the measurements and other details shown on this plan. The contractor shall be responsible for the accuracy of the measurements and other details shown on this plan. The contractor shall be responsible for the accuracy of the measurements and other details shown on this plan.



ATTIC LEVEL
APPROX. FLOOR
AREA: 38.10 SQ.M
(414 SQ.FT.)