



**15A Prinse Street WEST BEACH SA**

4  2  2 

AT A GLANCE: \* 4 BEDROOMS (Master on ground level)  
\* 2.5 BATHROOMS \* 3 LIVING AREAS  
\*SPECTACULAR OUTDOOR ENTERTAINING AREA \*  
ABOVE GROUND POOL/SPA \* DOUBLE GARAGE + 2  
OPEN SPACES \* 2.2KW SOLAR SYSTEM

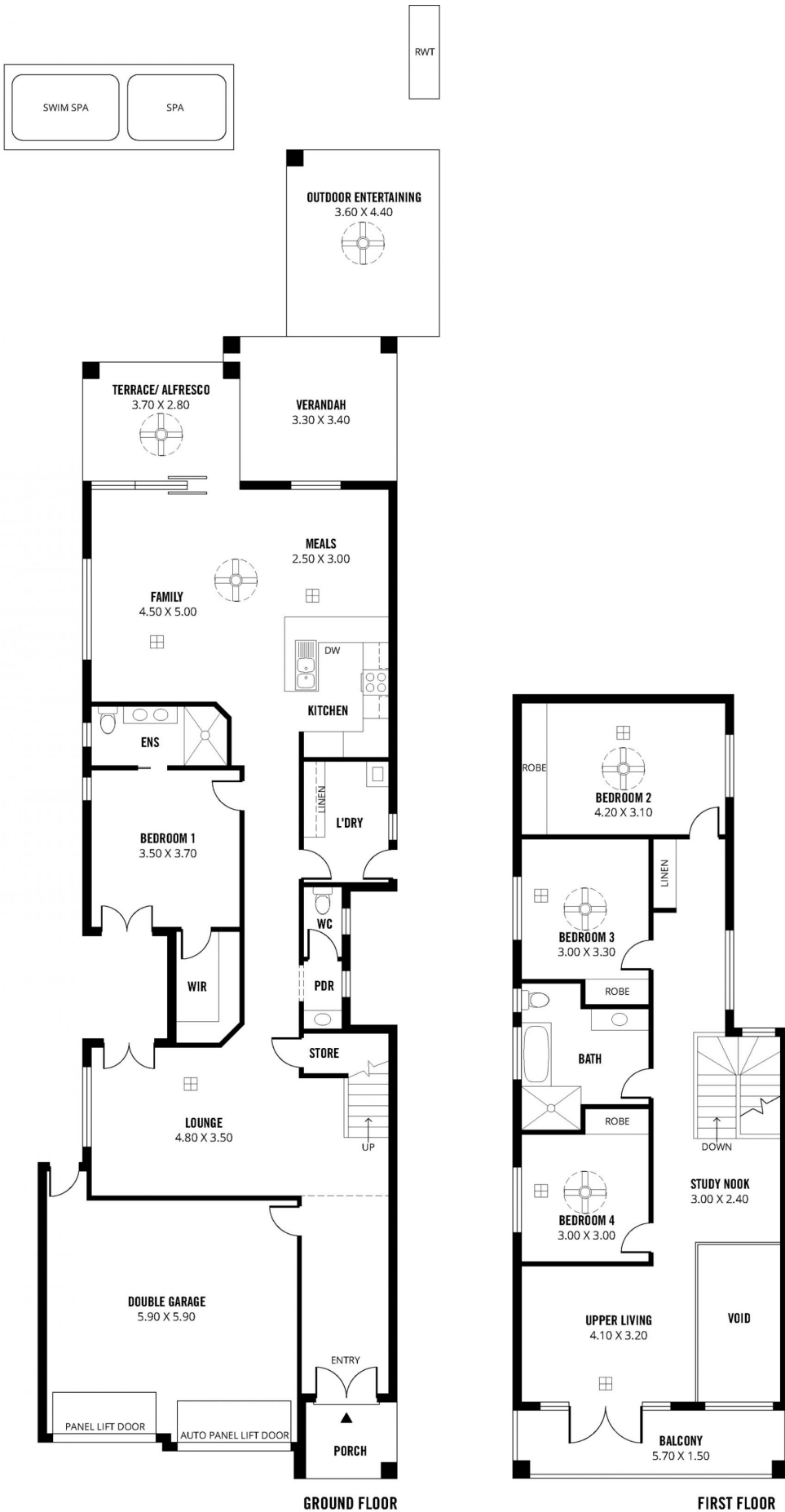
**Land Size** : 374 sqm  
**View** : <https://www.michaelkris.com.au/sale/sa/western-beachside-suburbs/west-beach/residential/house/5834659>

Are you ready for the WOW' factor, then come along and see the extraordinary quality and style this home has to offer.

The location is divine, only minutes to beautiful beaches, sporting and recreational facilities at West Beach and Adelaide Shores, within easy reach of private and public schools and only a short drive to fabulous shopping at Harbor Town Shopping Centre, Glenelg and Henley Beach precincts.



**Michael Georgiadis**  
08 8353 3000



- 315m<sup>2</sup> TOTAL
- 227m<sup>2</sup> Living
- 13m<sup>2</sup> Porch/Balcony
- 38m<sup>2</sup> Garage
- 21m<sup>2</sup> Terrace/Alfresco/Verandah
- 16m<sup>2</sup> Outdoor Entertaining

15A PRINSE STREET, WEST BEACH

Scale in metres. This drawing is for illustration purposes only. All measurements are approximate and details intended to be relied upon should be independently verified.