



490 The Parade ROSSLYN PARK SA

3  2  2 

This solid built 1994 Torrens Title Colonial home is a fabulous offering, approximately 200m² of living space and land area of approximately 518m² would make this a superb family home.

Building Size : 200 sqm
Land Size : 518 sqm
View : <https://www.michaelkris.com.au/sale/sa/eastern-suburbs/rosslyn-park/residential/house/5834664>

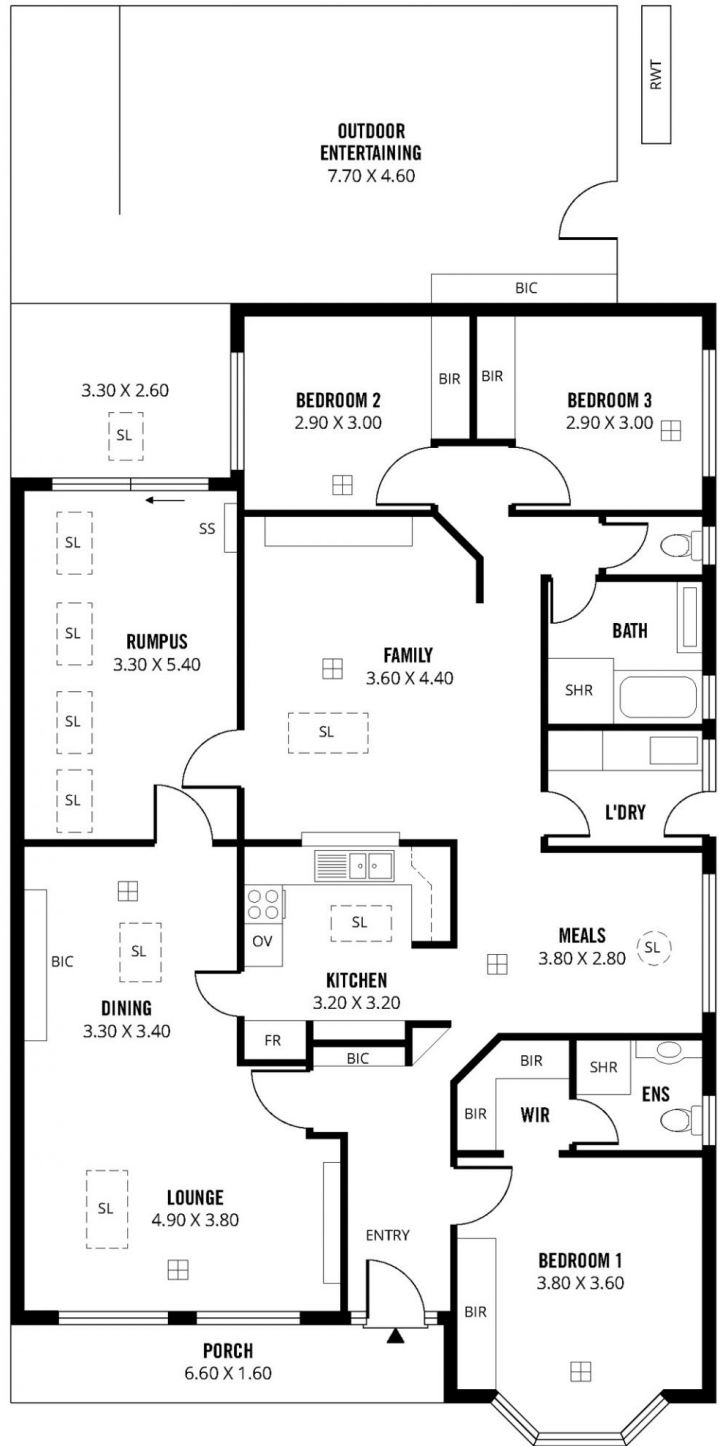
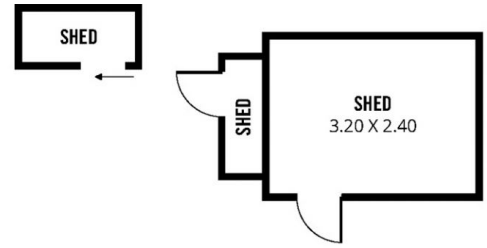
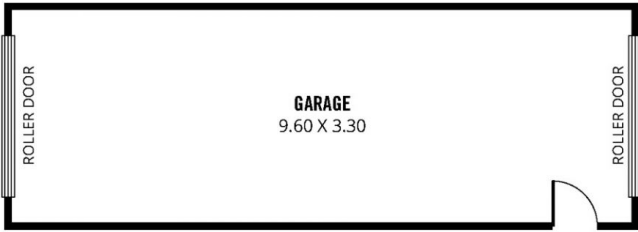
THE LOCATION

Set in the sought after Eastern Suburb of Rosslyn Park, minutes from Burnside Village Shopping Centre and the ever so popular "The Parade's" precinct offering some of Adelaide's best Restaurants, Cafes, Cinema's and shops. If schooling is a priority then you can't go past this home, some of the best elite private and public schools are within easy reach, or for the city workers public transport is close by.



Kris Papagiannis
08 8353 3000

THE PROPERTY



269m²

TOTAL

169m²

Living

12m²

Shed

34m²

Garage

19m²

Porch

35m²

Outdoor
Entertaining

490 THE PARADE, ROSSLYN PARK

Scale in metres. This drawing is for illustration purposes only. All measurements are approximate and details intended to be relied upon should be independently verified.

Produced by **The Fotobase Group**