



50 Amber Road HOPE VALLEY SA

4 🛏 2 🚿 2 🚗

Just when you think that special home will never come along.....then suddenly it happens!

PRICE GUIDE: \$795,000

AT A GLANCE: *4 BEDROOMS *3 or 4 LIVING AREAS
*2.5 BATHROOMS *ALFRESCO + 2 UNDERCOVER
PERGOLAS *DOUBLE GARAGE/HOME OFFICE
*INGROUND POOL WITH SPA JETS AND LIGHTING.

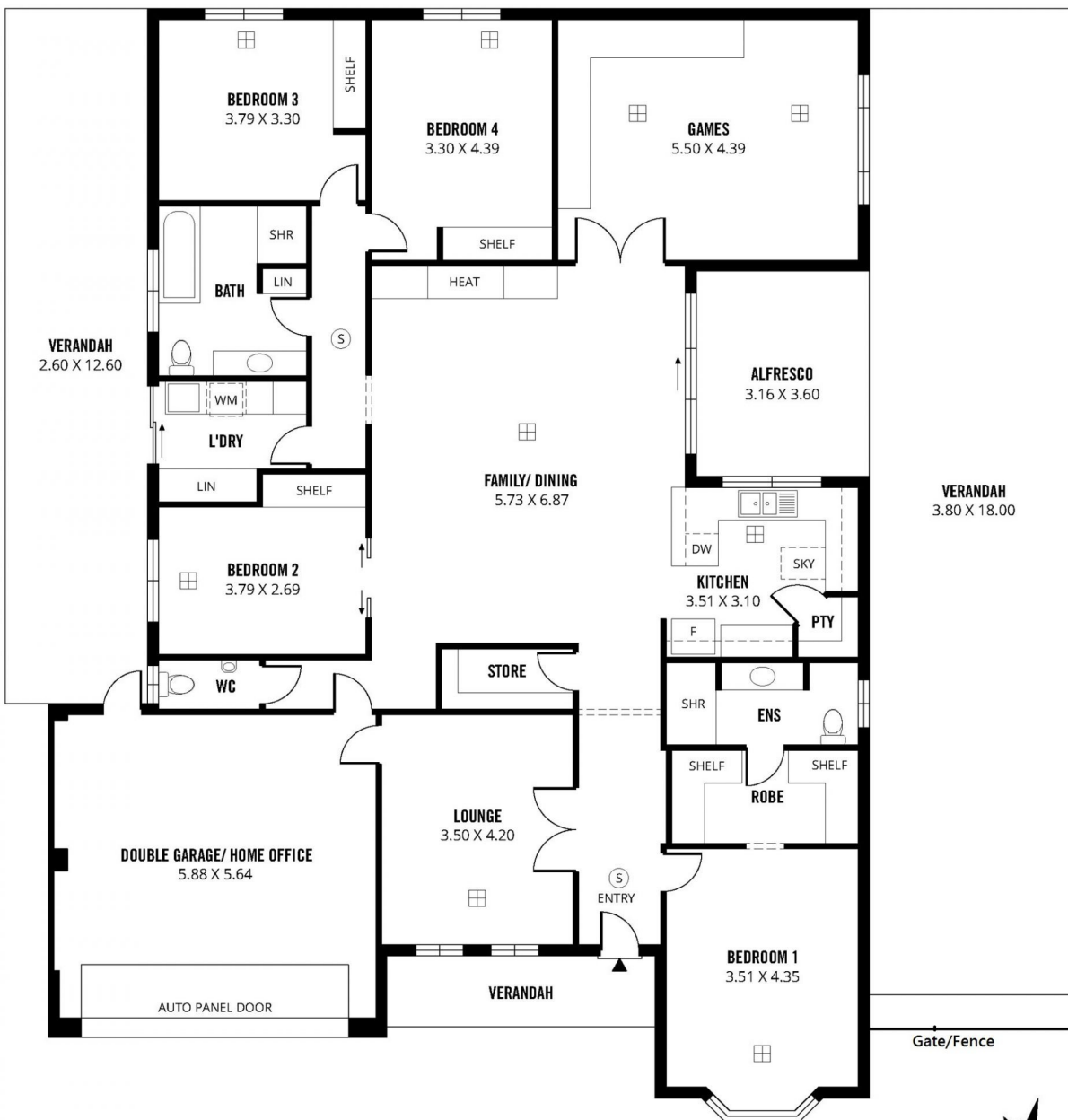
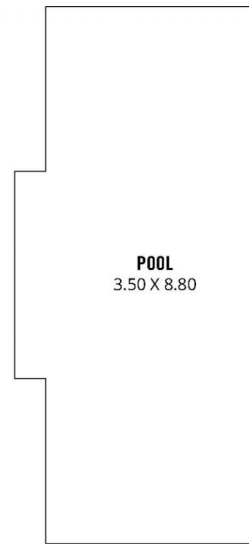
THE LOCATION

For the family looking for a lifestyle of fun and adventure then the location is sure to please, imagine living close to Anstey Hill, known for fabulous walking trails, bird life and other magical treats for the kids. This location offers bus routes to many eastern suburbs schools, Adelaide CBD

Land Size : 927 sqm
View : <https://www.michaelkris.com.au/sale/sa/north-north-east-suburbs/hope-valley/residential/house/5834670>



Kris Papagiannis
08 8353 3000



Land Size: 927m²
Living Size: 275m²



50 AMBER ROAD, HOPE VALLEY

Scale in metres. This drawing is for illustration purposes only. All measurements are approximate and details intended to be relied upon should be independently verified.

Produced by **The Fotobase Group**