



6 Matheson Avenue FINDON SA

3  1  1 

UNIQUE FAMILY HOME ON 1121m2 ALLOTMENT (approx).

"Vendor is open to offers before auction. If an auction is too confronting for you, please feel free to talk to us and make an offer before the 15th November, auction day"

This property would be an ideal family home or a developer's delight! For those who want plenty of space inside and out then this property is a must see. The 1121m2 allotment with established fruit trees, veggie beds, cottage gardens front and rear and plenty of outside space for the kids play will surely impress.

The location is superb; imagine living within easy reach of many essential amenities including close to public transport, walking distance to primary and secondary

Land Size : 1121 sqm

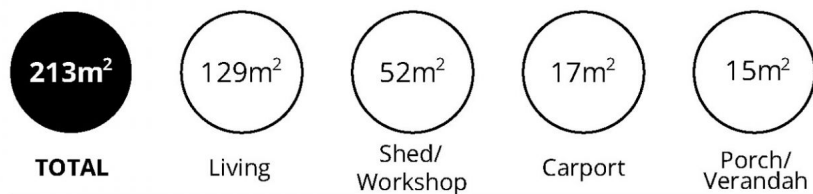
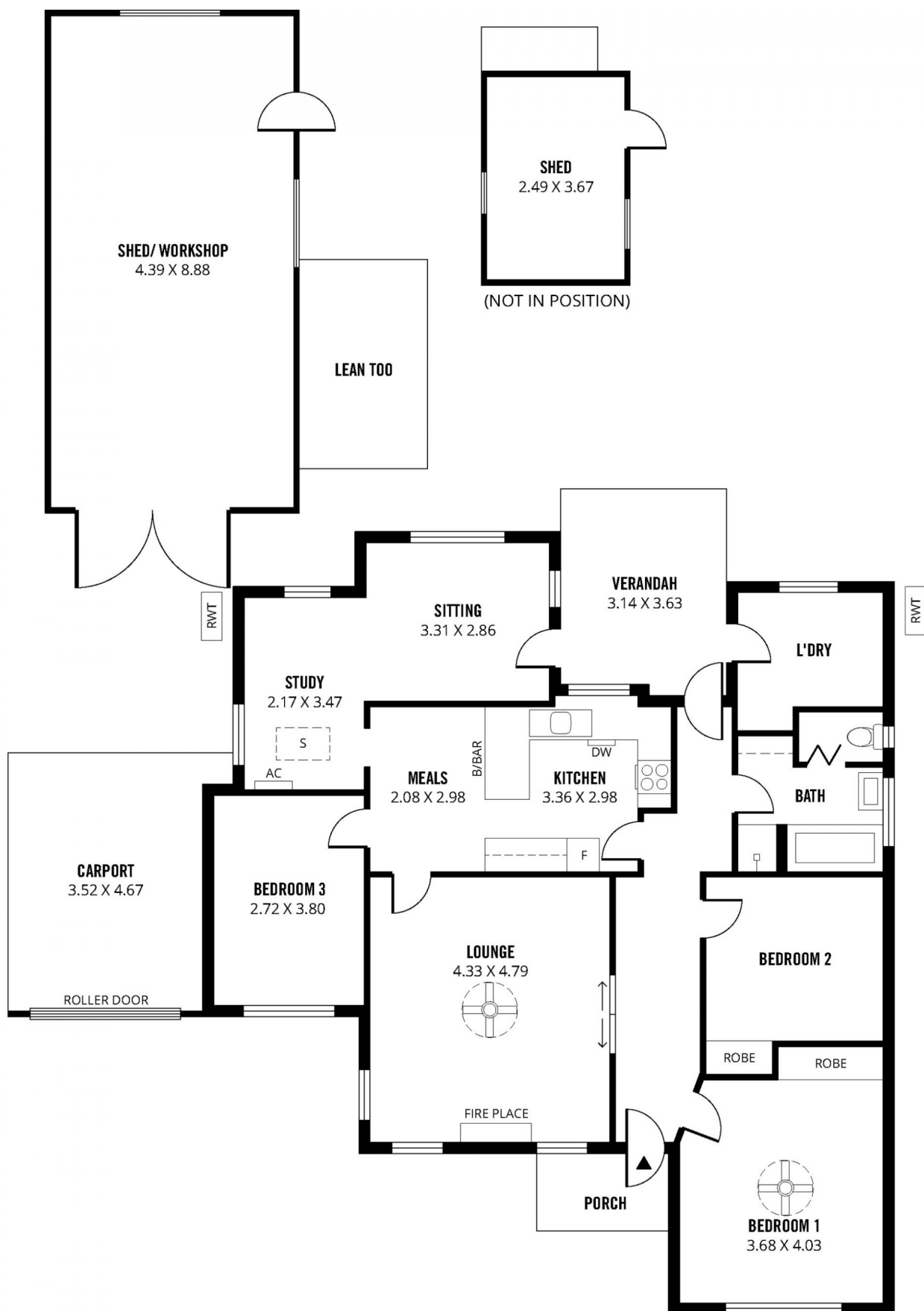
View : <https://www.michaelkris.com.au/sale/sa/western-beachside-suburbs/findon/residential/house/5924674>



Michael Georgiadis
08 8353 3000



Anthony Decelis
08 8353 3000



6 MATHESON AVENUE, FINDON

Scale in metres. This drawing is for illustration purposes only. All measurements are approximate and details intended to be relied upon should be independently verified.

Produced by The Fotobase Group