






13 Sabre Street NETLEY SA

3  1  1 

Potential to develop 2 allotments, subject to Council approval.

Netley is a much sought after location and this home is set in a very quiet area close to so many amenities including local shopping, choice of schools and public transport.

This family home could respond well to some tender loving care, or demolish and rebuild.

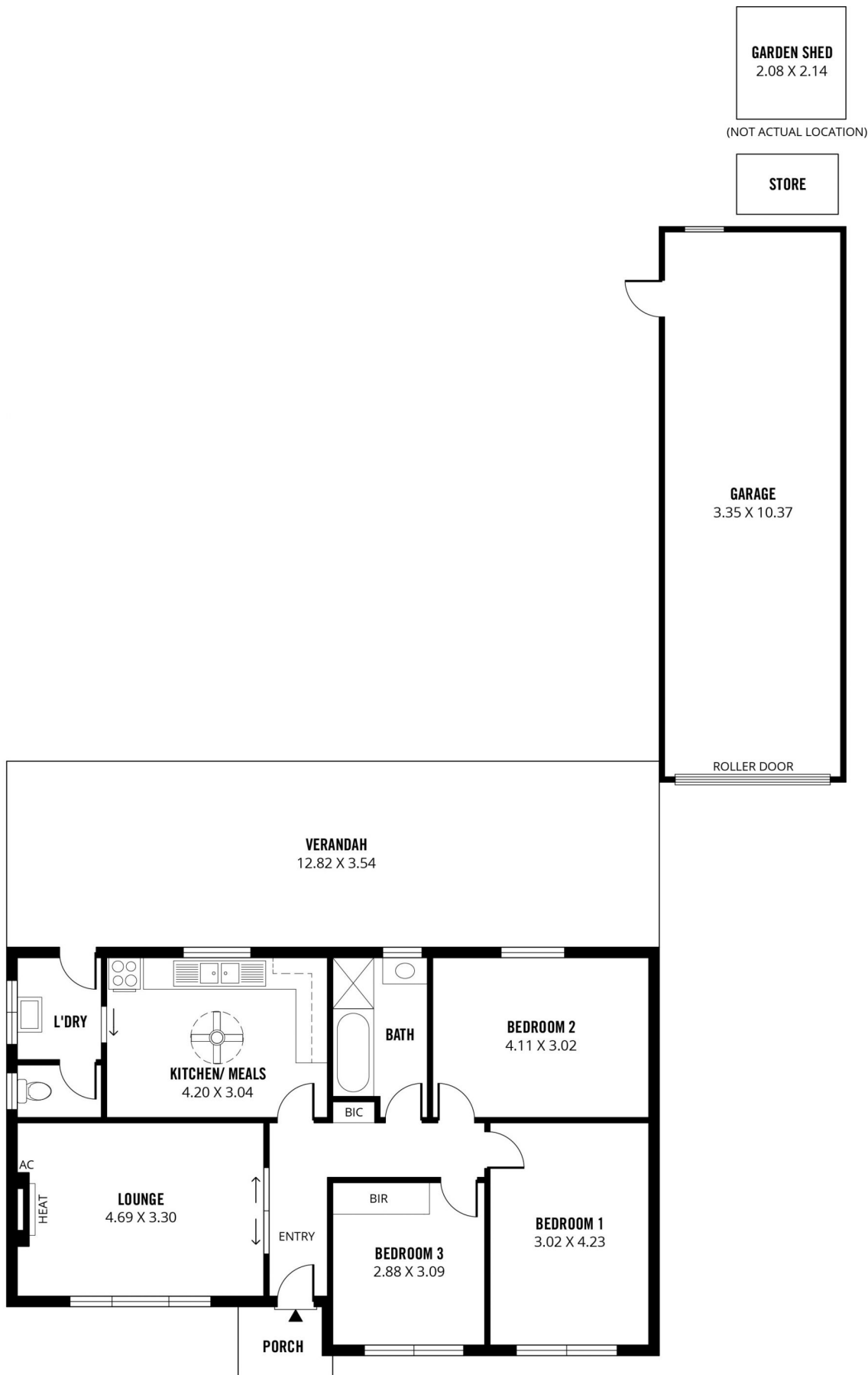
The current floor plan comprises 3 bedrooms, eat-in kitchen, separate living room with wall unit air conditioner. There is a double length galvanised garage/workshop, small storeroom and a garden shed. Neat and tidy bathroom, wc and laundry.

For those looking for land don't go past this address, this

Land Size : 808 sqm
View : <https://www.michaelkris.com.au/sale/sa/western-beachside-suburbs/netley/residential/house/5944087>



Anthony Decelis
08 8353 3000



TOTAL



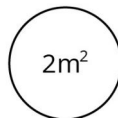
Living



Shed



Garage



Porch



Verandah



13 SABRE STREET, NETLEY

Scale in metres. This drawing is for illustration purposes only. All measurements are approximate and details intended to be relied upon should be independently verified.

Produced by **The Fotobase Group**