



87 Palm Avenue ROYAL PARK SA

3  1  1 

On offer is this solid brick c1960'S home on an allotment size of approximately 385m2.

Royal Park has so much to offer those who wish to live mid-way between the city and the sea. 87 Palm Avenue is set amongst other character built homes, within easy reach of local shopping centres, golf club, quality schools and an easy commute to the city and beautiful beaches.

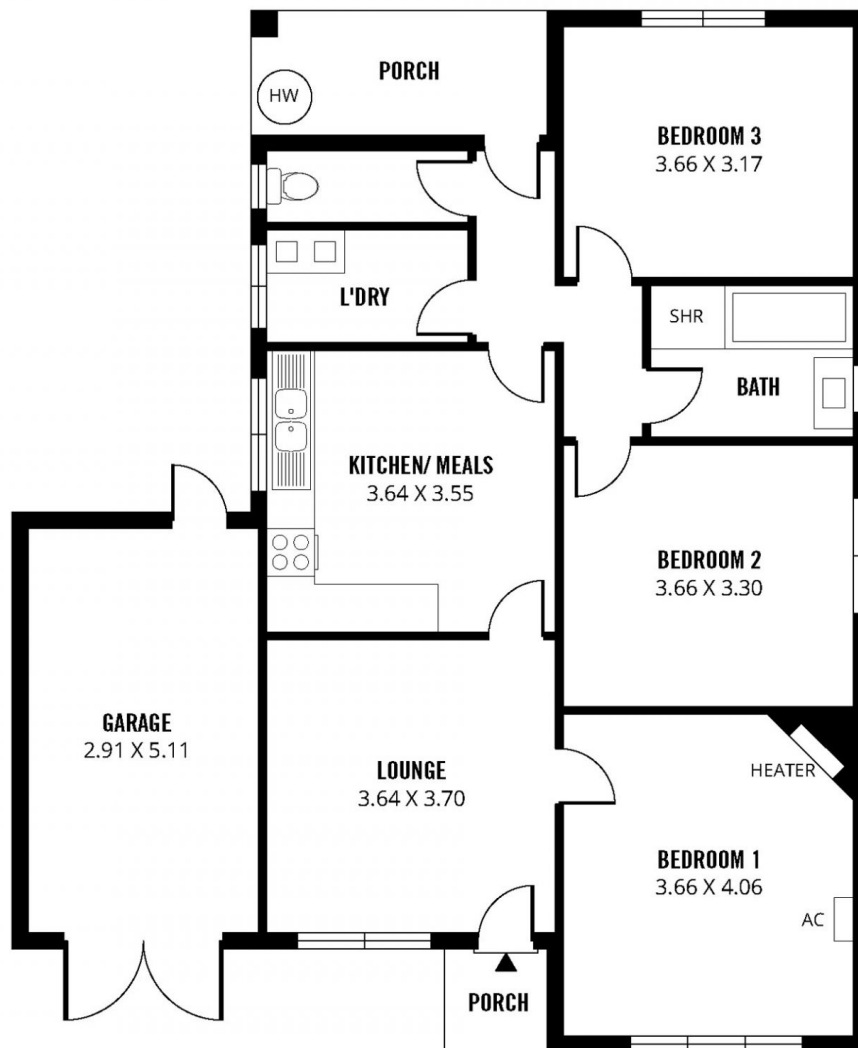
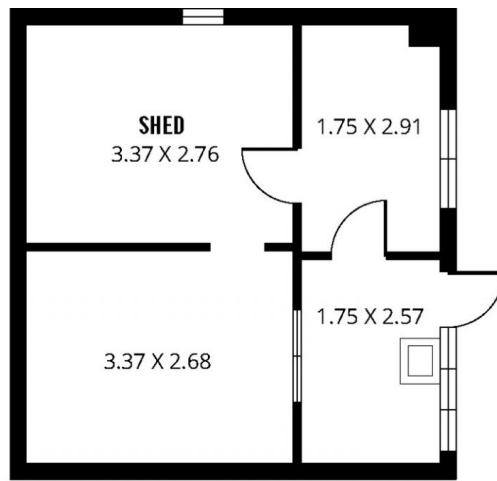
If you are in the market to buy your 1st home then this could be an opportunity not to be missed, this one could be a great addition to your property portfolio, or there could be the opportunity to demolish and start again (subject to Council consent).

This quaint home offers a delightful retro interior comprising 3 bedrooms, main with a lovely feature rose ceiling, new

Land Size : 385 sqm
View : <https://www.michaelkris.com.au/sale/sa/western-beachside-suburbs/royal-park/residential/house/5944484>



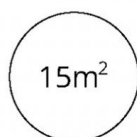
Michael Georgiadis
08 8353 3000



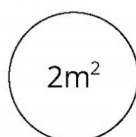
TOTAL



Living



Garage



Porch

87 PALM AVENUE, ROYAL PARK