






5 Hume Street ADELAIDE SA

3  2  1 

City living is becoming a normal living experience for the young and old. Leave the car at home and walk to work, city shopping and restaurant precinct on Hutt Street.

View : <https://www.michaelkris.com.au/sale/sa/adelaide/adelaide/residential/townhouse/5945774>

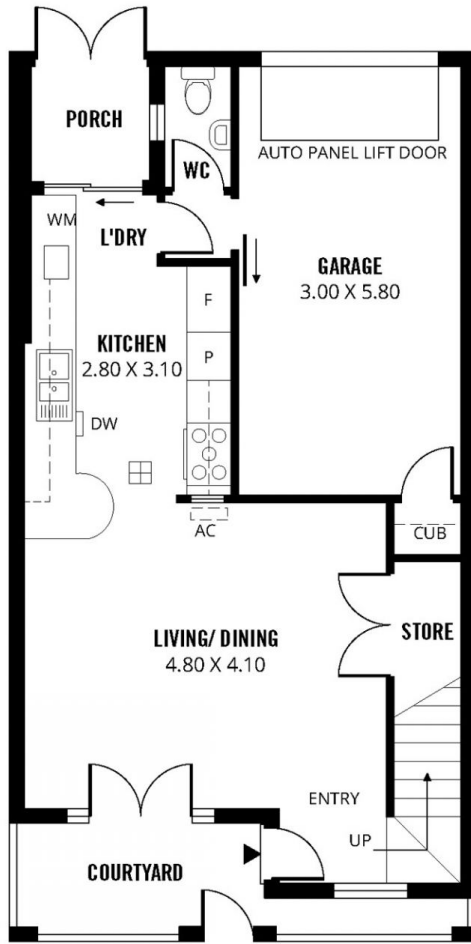
On offer is this stunning modern lock-up and go townhouse offering security, convenience and spacious living spanning over two levels.

LOWER LEVEL

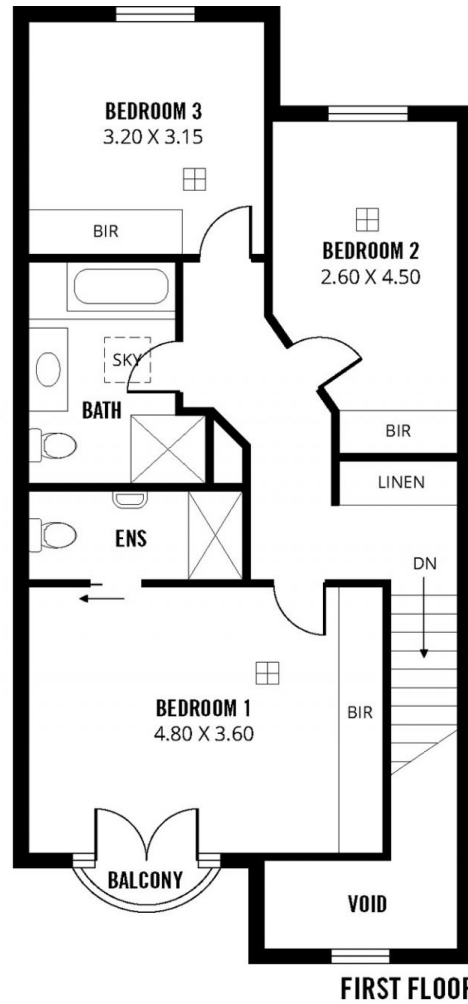
This level has a beautiful light-filled open plan living area with attractive timber floors, dining area and double door access to the front courtyard where you can sit and enjoy a cuppa or a glass of wine. The adjacent galley kitchen has an abundance of modern built-in storage cupboards, granite bench tops, breakfast bar, modern stainless steel cooking appliances, gas cooktop, dishwasher and discreet



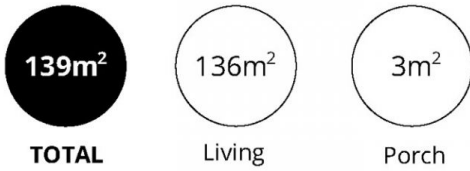
Michael Georgiadis
08 8353 3000



GROUND FLOOR



FIRST FLOOR



5 HUME STREET, ADELAIDE

Scale in metres. This drawing is for illustration purposes only. All measurements are approximate and details intended to be relied upon should be independently verified.

Produced by **The Fotobase Group**