



8 Wells Road GOOLWA SA

3  1  1 

This quaint 3 bedroom 1970's brick veneer home is very livable and located in one of Goolwa's quiet streets close to the river and Main Street.

With many opportunities to upgrade and situated on a large allotment of approximately 965m² with a large garage with separate room currently converted into a bedroom.

The home comprises 3 bedrooms, neat and tidy bathroom with separate wc and a large laundry. The open plan kitchen/dine offers plenty of space for family living and there is a very spacious lounge room with a wall unit and reverse cycle air conditioner.

Outside has a ramp for easy access to the garden areas and there is a rainwater tank for your convenience.

Building Size : 112.8 sqm
Land Size : 965 sqm
View : <https://www.michaelkris.com.au/sale/sa/leurieu-peninsula/goolwa/residential/house/5976191>



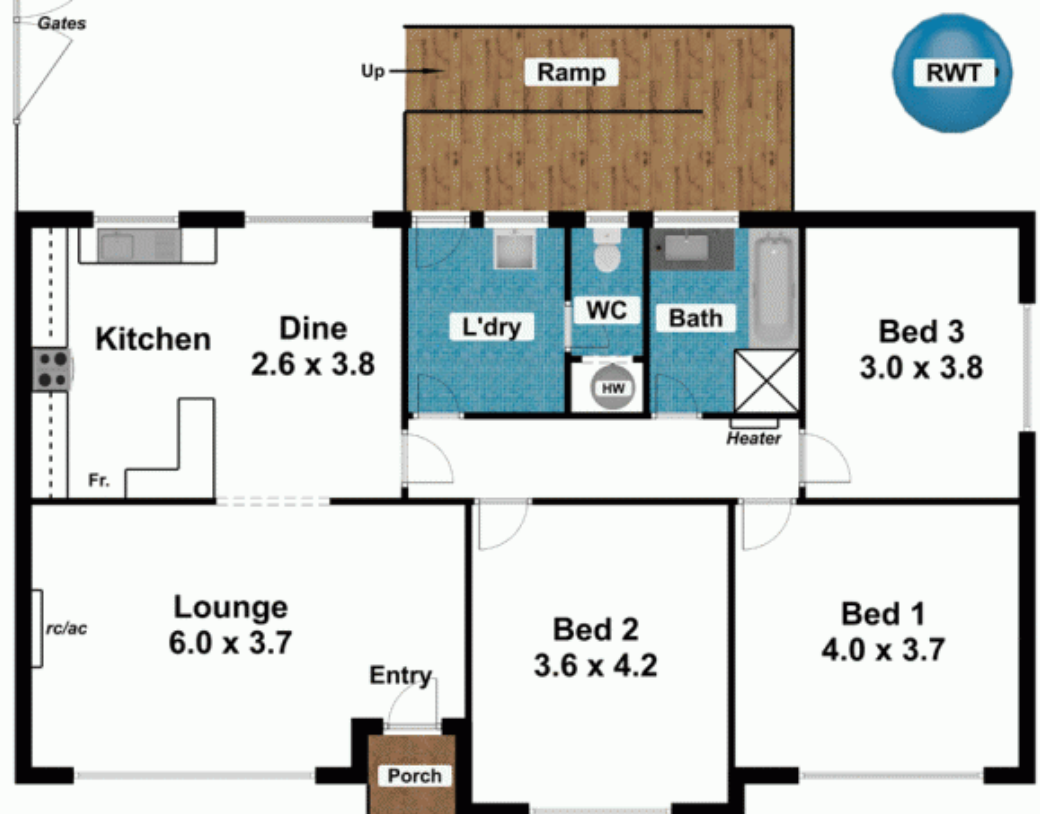
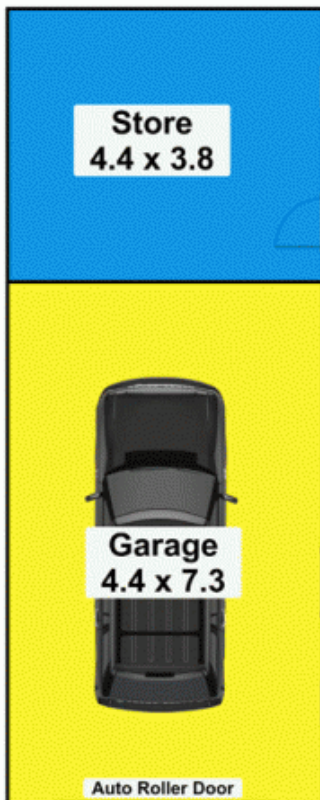
Bruce Deans
0418 897 518



8 Wells Road GOOLWA



AREA (Estimate Only)	
LIVING	112.80m ²
PORCH	1.50m ²
GARAGE	32.10m ²
STORE	16.70m ²
TOTAL	163.10m ²



This drawing is for illustration purposes only.
All measurements are approximate only and information
intended to be relied upon should be independently verified.
Floorplan produced by Open2view.com