






12 Grimmatt Avenue PARAFIELD GARDENS SA

3  1  3 

There's plenty of potential here.

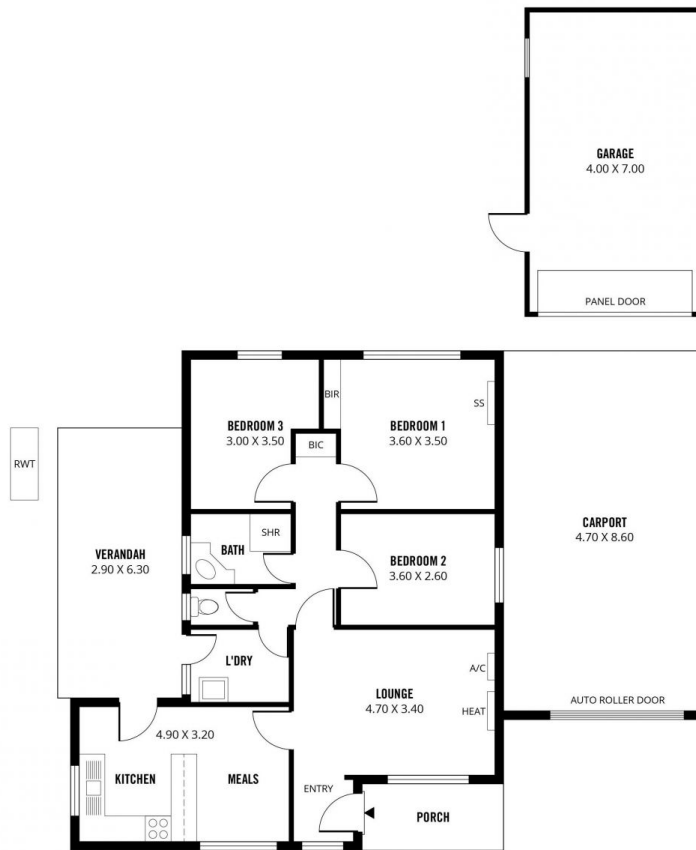
With an impressive 19 metre fronted near level regular shaped allotment located in a popular area undergoing regeneration with plenty of new construction and residential development happening nearby.

Most of the home remains in its original condition, however a number of improvements have been undertaken over the previous years by the current owner, which include air-conditioning, gas heating, roller shutters and the roof was replaced around 10 years ago. There is excellent off street parking with a large carport with automatic roller-door and drive-thru access to the garage/workshop. There's also a rear verandah and plenty of room for children to play in the back garden.

Building Size : 105 sqm
Land Size : 585 sqm
View : <https://www.michaelkris.com.au/sale/sa/north-north-east-suburbs/parafield-gardens/residential/house/6005926>



Matthew Lee
08 8353 3000



12 GRIMMETT AVENUE, PARAFIELD GARDENS

Scale in metres. This drawing is for illustration purposes only. All measurements are approximate and details intended to be relied upon should be independently verified.

Produced by The Fotobase Group