



18 Crisp Road ELIZABETH DOWNS SA

3  1  2 

WHY PAY RENT? Great entry into the Residential or Investment Property.

This solid brick family home features 3 bedrooms, main with built-ins and all with ceiling fans.

Large living/dining area, reverse cycle split system air conditioner for year-round comfort.

There is a functional kitchen with as new stove/oven and there is a refurbished bathroom.

OTHER FEATURES:

- * Ducted evaporative cooling
- * Generous size allotment of approximately 639m2
- * HUGE 6m x 9m garage/workshop and there is a double

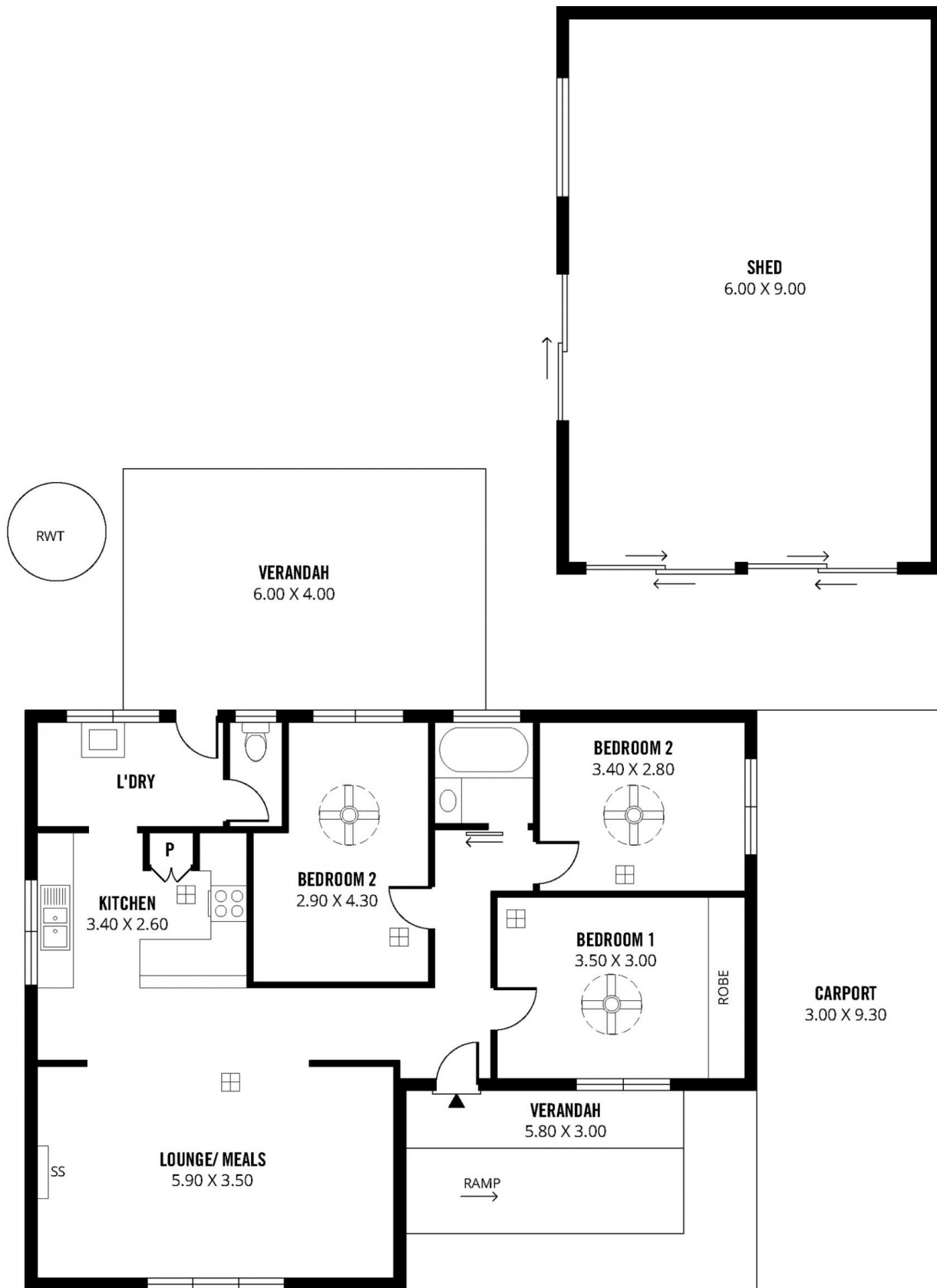
View : <https://www.michaelkris.com.au/sale/sa/north-north-east-suburbs/elizabeth-downs/residential/house/6049522>



Anthony Decelis
08 8353 3000



Michael Georgiadis
08 8353 3000



203m²

TOTAL

97m²

Living

60m²

Shed

17m²

Verandah

29m²

Carport

18 CRISP ROAD, ELIZABETH DOWNS

Scale in metres. This drawing is for illustration purposes only. All measurements are approximate and details intended to be relied upon should be independently verified.

Produced by **The Fotobase Group**