



**8 Quarry Road GULFVIEW HEIGHTS SA**

4 🏠 2 🚗 2 🚗

Nestled on a picturesque 1889 sqm professionally landscaped allotment in the ever popular Gulfview Heights sits this architecturally designed double brick residence constructed in 1980 by Master builder Tony Gasparin.

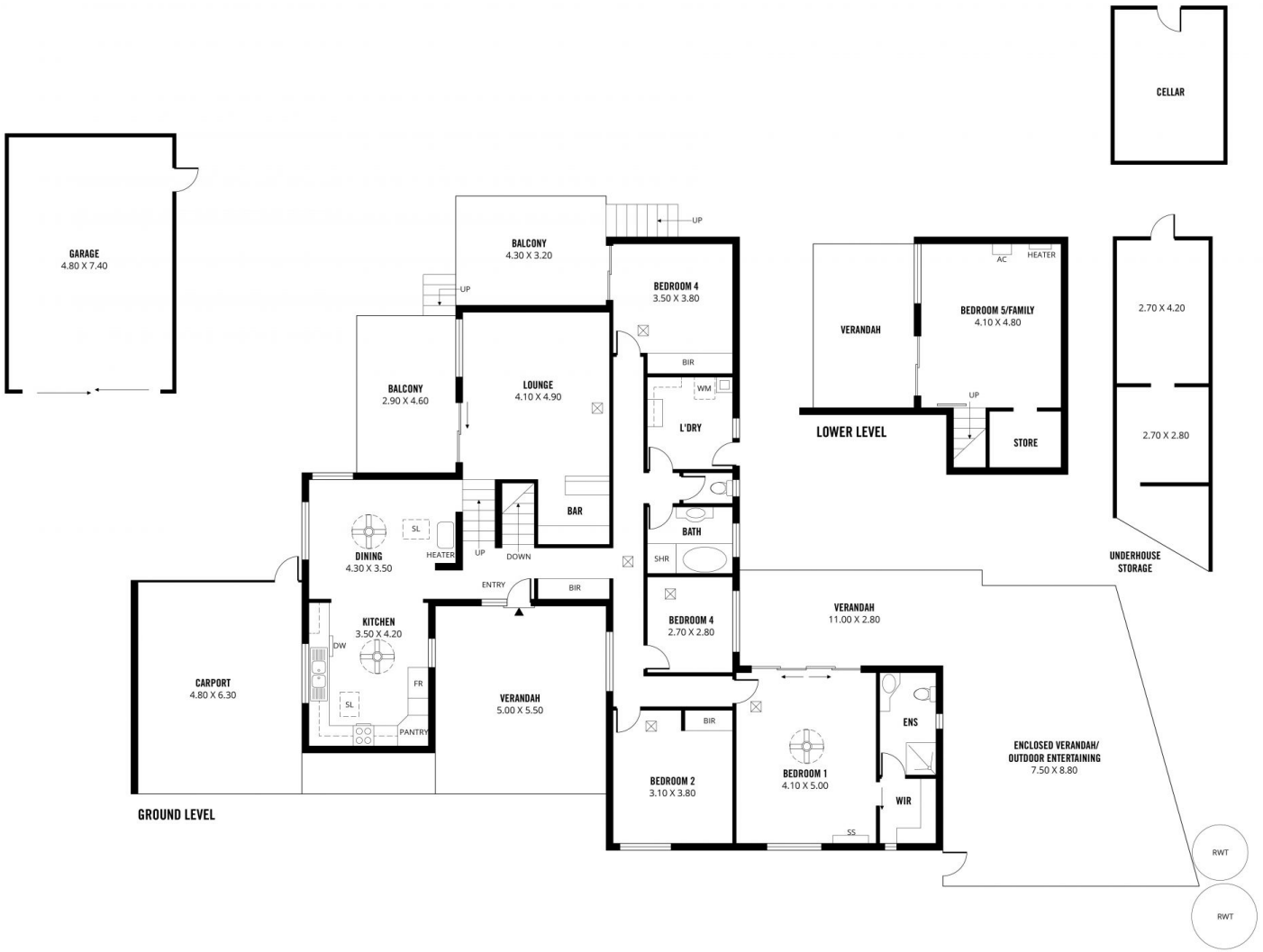
**Building Size** : 225 sqm  
**Land Size** : 1889 sqm  
**View** : <https://www.michaelkris.com.au/sale/sa/north-north-east-suburbs/gulfview-heights/residential/house/6330953>

The character filled split level design comprises four bedrooms, a stylishly renovated bathroom, two separate living areas and an open plan updated kitchen and meals. The large main bedroom has external access and an updated ensuite.

There's plenty of room to relax and enjoy the outdoors in the private garden. There's two balconies, a front verandah, plus an all weather undercover outdoor entertaining & BBQ area. There's excellent off-street parking for cars, trade vehicles, boats, a caravan, small truck or trailers and there's rear vehicle access to the



**Matthew Lee**  
08 8353 3000



- 225m<sup>2</sup>

Living
- 27m<sup>2</sup>

Balcony
- 38m<sup>2</sup>

Garage
- 30m<sup>2</sup>

Carport
- 114m<sup>2</sup>

Verandah/  
Outdoor Entertaining

**8 QUARRY ROAD, GULFVIEW HEIGHTS**

Scale in metres. This drawing is for illustration purposes only. All measurements are approximate and details intended to be relied upon should be independently verified.