



## 2 Fitch Road FULHAM SA

3  1  1 

WAKE UP TO LUSH PARK SETTING AND FACE TRANQUILITY EVERYDAY!

Enjoy living here in this well-maintained retro lover's classic, or plan to build your dream home (3 plans available subject to Council consent (2 x single storey & 1 x double storey), ask the Real Estate Agent for copies.

This land is arguably in one of the best Blue Chip beachside locations.

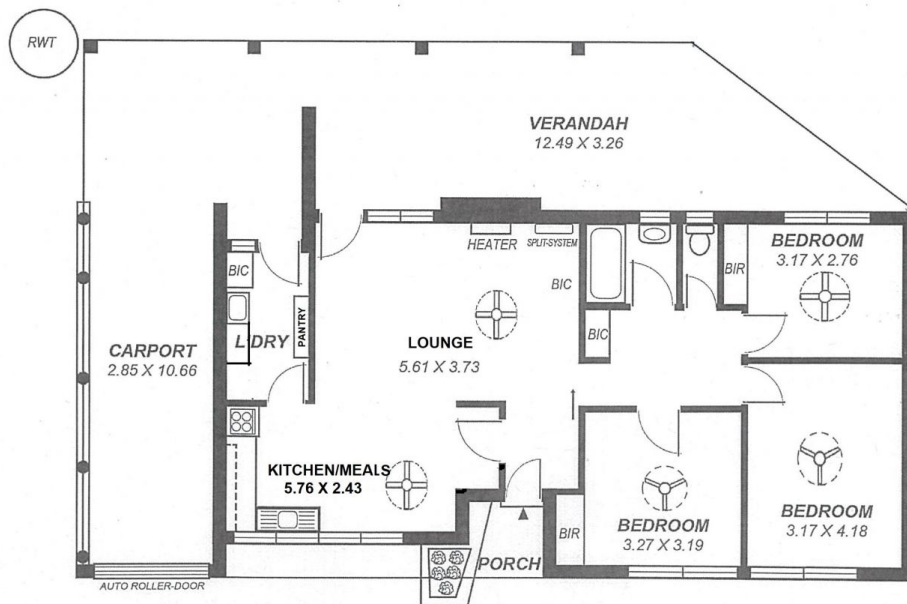
### THE LOCATION

- \* Tightly held location between Coral Sea Road and Halsey Road
- \* Zoned for Henley High and Primary Schools
- \* Only metres to the beautiful Linear Trail Park

**Land Size** : 520 sqm  
**View** : <https://www.michaelkris.com.au/sale/sa/western-beachside-suburbs/fulham/residential/house/6338586>



**Con Papagiannis**  
08 8353 3000



*This drawing is for illustration purposes only.  
All measurements are approximate and details intended  
to be relied upon should be independently verified.*