



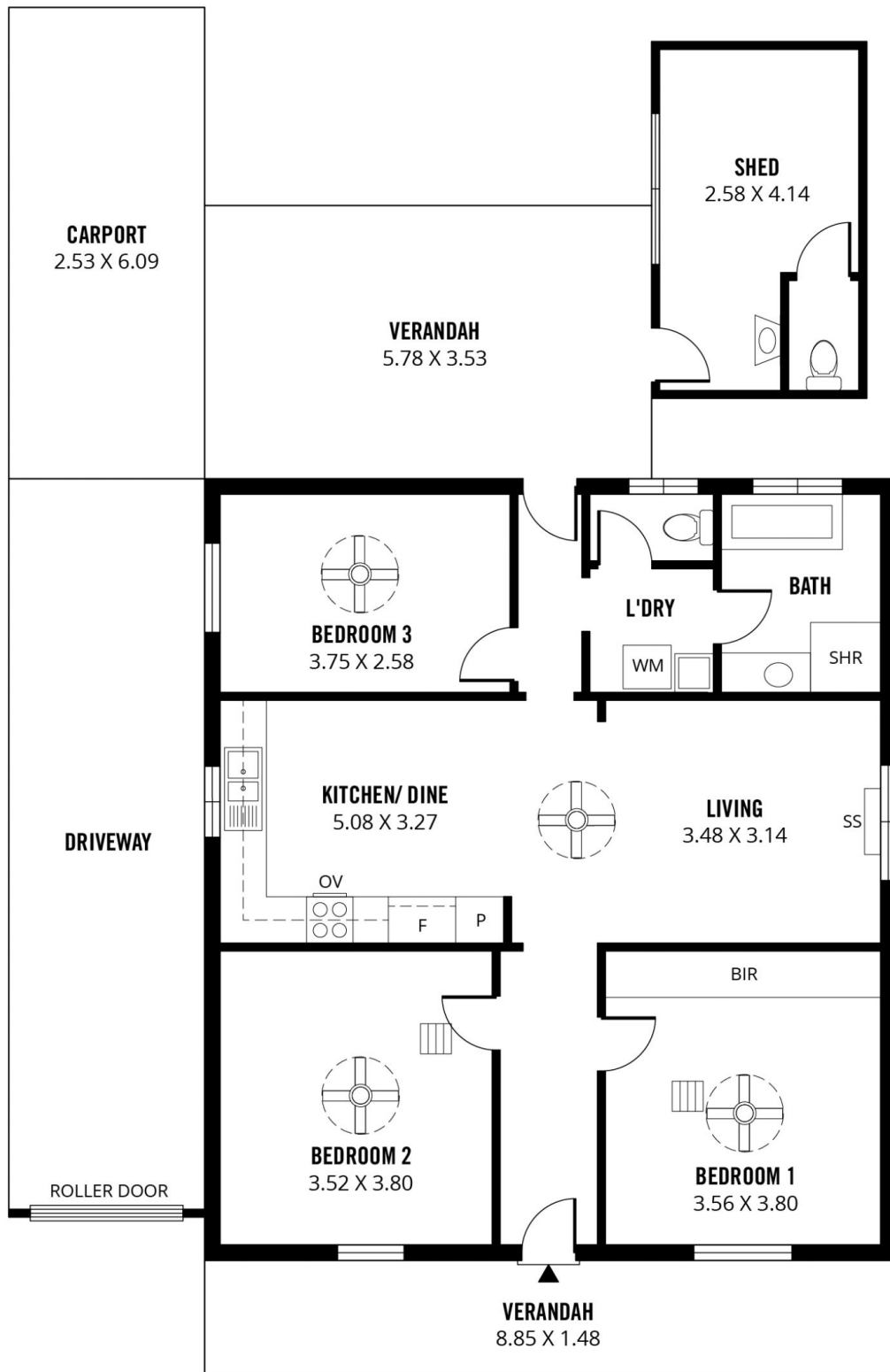
8 Ivey Street OTTOWAY SA

3  1  1 

View : <https://www.michaelkris.com.au/sale/sa/western-beachside-suburbs/ottoway/residential/house/6461747>



Michael Georgiadis
08 8353 3000



151m²

TOTAL

90m²

Living

13m²

Shed

15m²

Carport

33m²

Verandah

8 IVEY STREET, OTTOWAY

Scale in metres. This drawing is for illustration purposes only. All measurements are approximate and details intended to be relied upon should be independently verified. Produced by **The Fotobase Group**