






20 Hardy Street FINDON SA

3  1  2 

Live-in, invest, extend/renovate, demolish and rebuild, or subdivide subject to Council consents.

This property offers potential plus, the current solid brick retro style home is set on a generous allotment of approximately 667m² and presents a very neat and tidy presentation throughout.

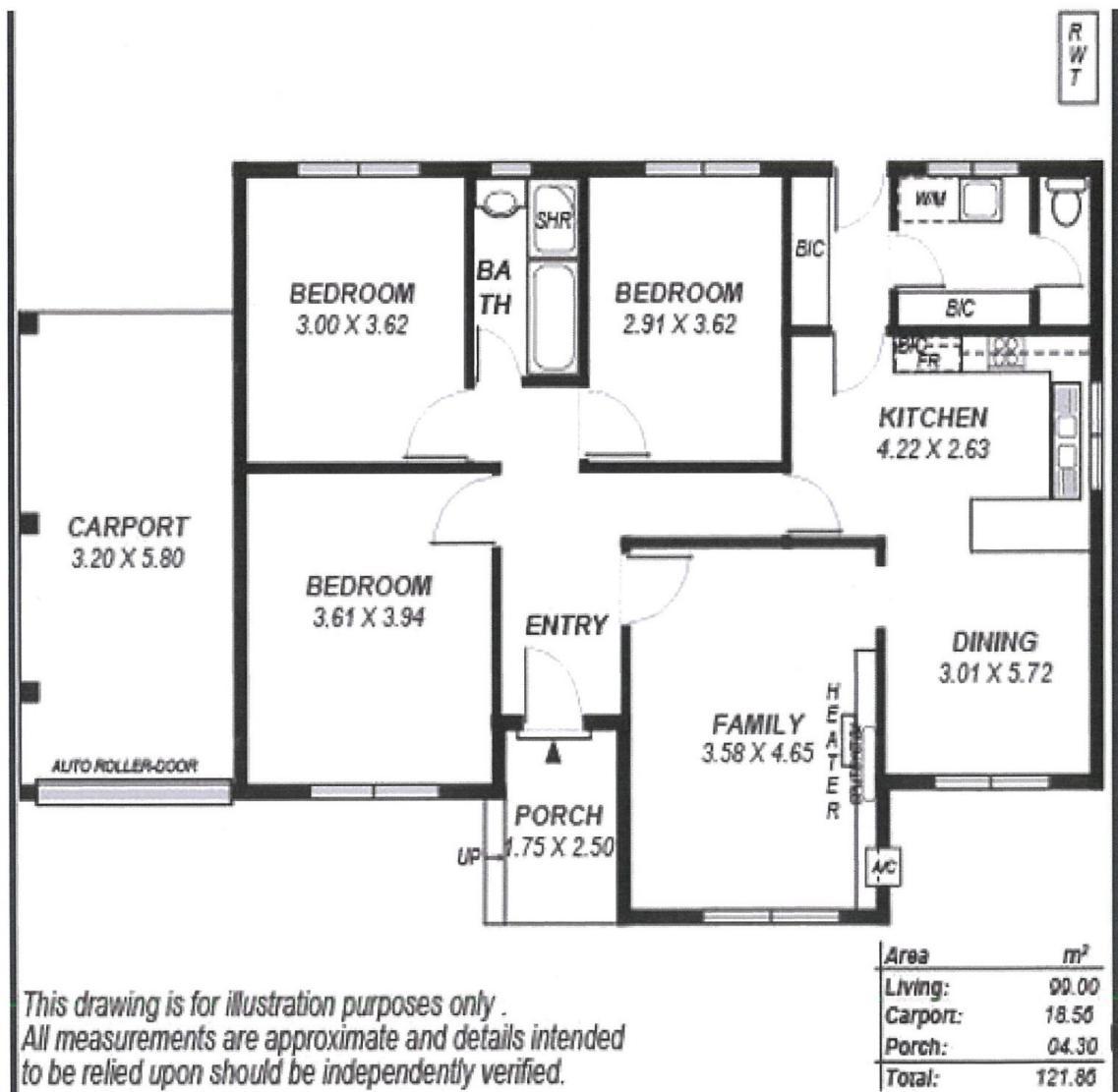
The location is brilliant, mid-way between the city and beautiful beaches, walk to local shops and public transport, only minutes from private and public schools, Day Care Centres and Kindergartens, short drive to Westfield West Lakes and surrounding shopping centres and amenities.

The current home was built circa 1960 and offers a wide entry hallway leading to 3 good bedrooms and the light-filled living room with a built-in heater and reverse

Land Size : 667 sqm
View : <https://www.michaelkris.com.au/sale/sa/western-beachside-suburbs/findon/residential/house/6491717>



Michael Georgiadis
08 8353 3000



20 Hardy Street, Findon