






**135 Bongalong Road HINDMARSH ISLAND SA**

**5**  **3**  **3** 

#### THE LOCATION

Situated on the southern side of Hindmarsh Island comprising an estimated area of 55.4 hectares this uniquely private property's southern boundary runs along approximately 1 km of waterfrontage, Coorong National Park.

#### THE LAND

The land has been comprehensively revegetated and restored along the waterways and perimeters with thousands of indigenous trees, shrubs, and varieties of indigenous grasses. Annually more than 500 trees and shrubs including bush foods have been planted - estimating more than 12,000 planted since 1994.

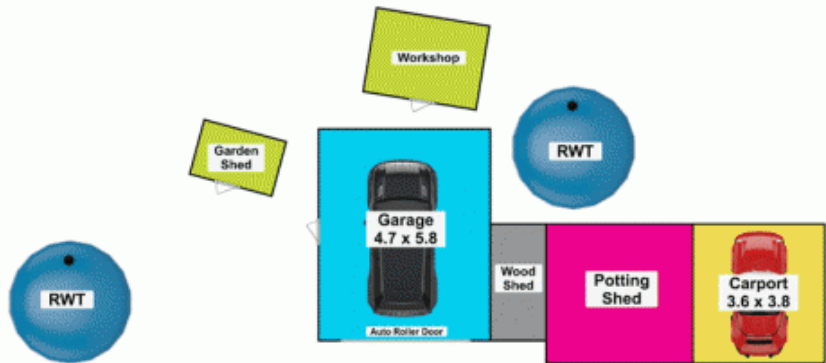
**Land Size** : 55.4 sqm

**View** : <https://www.michaelkris.com.au/sale/sa/fleu-rieu-peninsula/hindmarsh-island/residential/house/6563696>



**Bruce Deans**  
**0418 897 518**

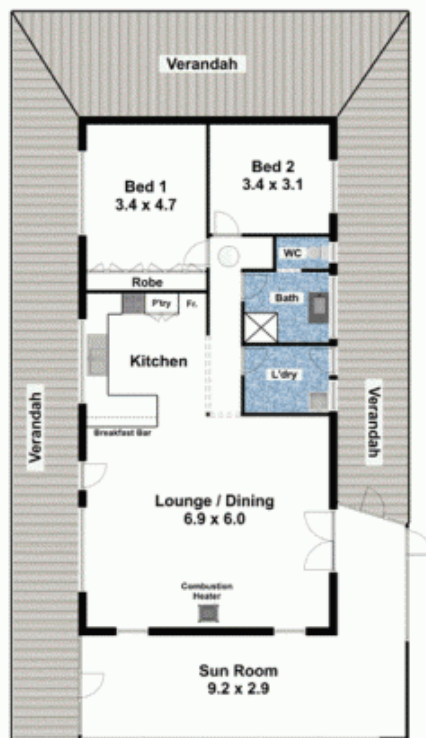
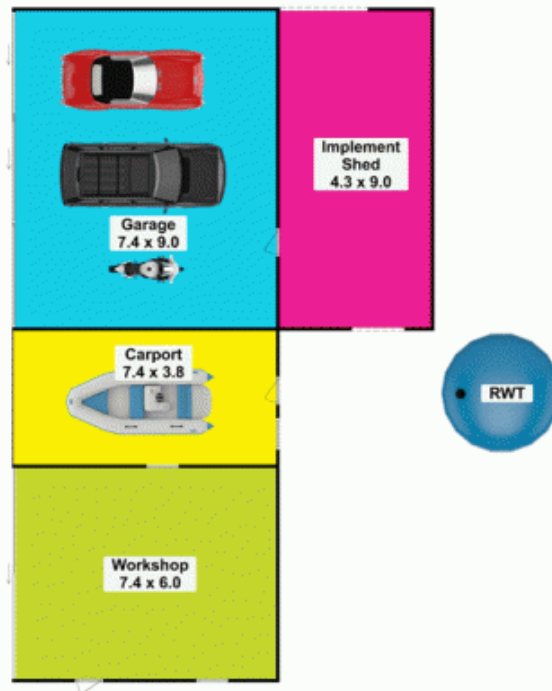
**Residence**  
**135 Bongalong Road**  
**HINDMARSH ISLAND**



AREA (Estimate Only)	
LIVING	173.30m <sup>2</sup>
DECKING	62.40m <sup>2</sup>
VERANDAH	26.60m <sup>2</sup>
GARAGE	27.30m <sup>2</sup>
CARPORT	13.60m <sup>2</sup>
Potting Shed	15.30m <sup>2</sup>
WORKSHOP	7.20m <sup>2</sup>
TOTAL	325.70m <sup>2</sup>

This drawing is for illustration purposes only.  
 All measurements are approximate only and information  
 intended to be relied upon should be independently verified.  
 Floorplan produced by Open2view.com

Cottage  
135 Bongalong Road  
HINDMARSH ISLAND



Cottage

AREA (Estimate Only)	
LIVING	143.90m <sup>2</sup>
VERANDAHS	89.10m <sup>2</sup>
GARAGE	66.60m <sup>2</sup>
CARPORT	28.60m <sup>2</sup>
WORKSHOP	44.40m <sup>2</sup>
Implement Shed	38.70m <sup>2</sup>
TOTAL	411.30m <sup>2</sup>

Studio

AREA (Estimate Only)	
LIVING	20.30m <sup>2</sup>
VERANDAHS	20.00m <sup>2</sup>
TOTAL	40.30m <sup>2</sup>

This drawing is for illustration purposes only.  
All measurements are approximate only and information  
intended to be relied upon should be independently verified.  
Floorplan produced by Open2view.com

