



### 8 Kent Drive VICTOR HARBOR SA

3  2  3 

Sit on the balcony and watch the ever-changing sunsets and sunrises.

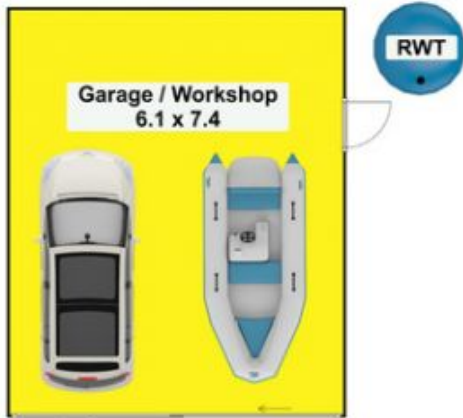
This beautiful brick veneer two storey home was built by the renowned Virgin and Son Builders and is situated on a quiet and secluded no through road, facing southeast looking towards Granite Island the Seal Rock. Watch the Inman River pass your front door, or stroll traffic free down to the privacy of Kent Reserve complete with BBQ facilities, exercising equipment and plenty of room for your visitors to enjoy, or continue to the beach. This home is within a short walk to the Hospital, Library, City of Victor Harbor Council Chambers and Victor Harbor High School. Across the road is a footbridge over the river where you could walk into the main street of Victor Harbor for wining and dining at the many restaurants and hotels. Walk the other way along Franklin Parade to Yikki for morning coffee or later in the

**Land Size** : 710 sqm  
**View** : <https://www.michaelkris.com.au/sale/sa/fleu-rieu-peninsula/victor-harbor/residential/house/6653949>

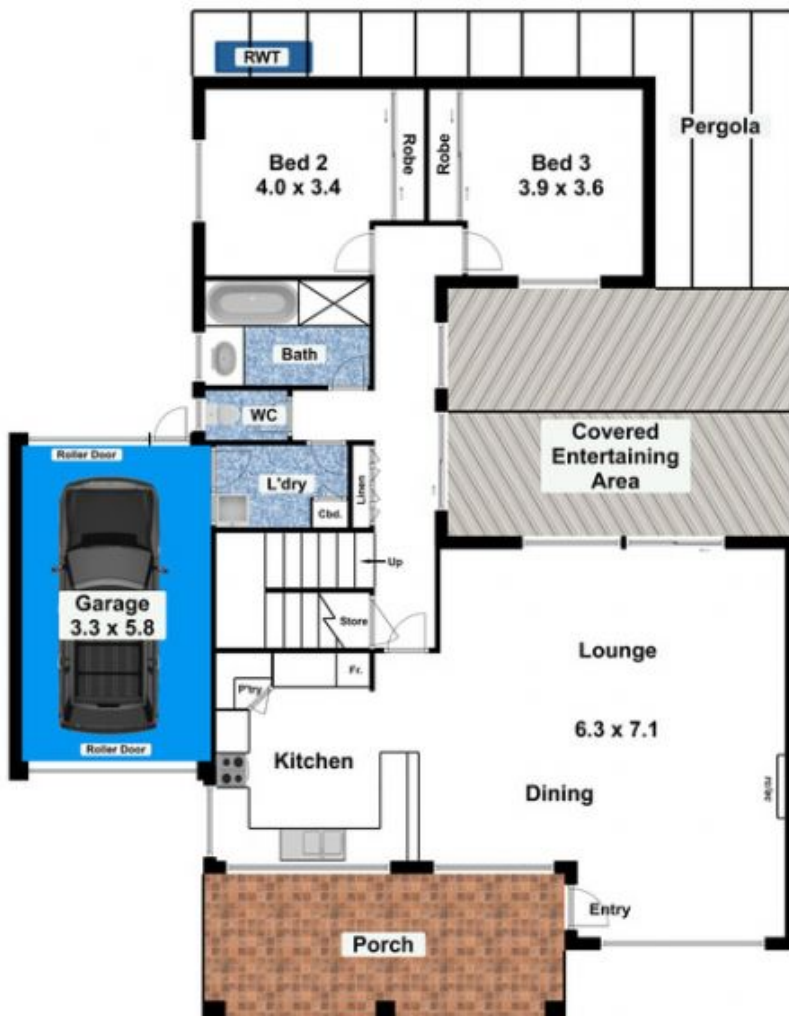


**Rosie Hage**  
08 8353 3000

8 Kent Drive  
VICTOR HARBOR



UPPER LEVEL



LOWER LEVEL

AREA (Estimate Only)	
LIVING	205.10m <sup>2</sup>
PORCH	17.40m <sup>2</sup>
GARAGE	19.90m <sup>2</sup>
Entertain Area	28.90m <sup>2</sup>
BALCONY	17.10m <sup>2</sup>
Garage - W/S	45.20m <sup>2</sup>
TOTAL	333.60m <sup>2</sup>

This drawing is for illustration purposes only.  
All measurements are approximate only and information  
intended to be relied upon should be independently verified.  
Floorplan produced by Open2view.com