



14 Broughton Avenue KURRALTA PARK SA

2  1 

This cosy self-managed Strata maisonette is set on a quiet street amongst other character homes and the convenience of public transport being within walking distance, less than 10 minutes to the Adelaide CBD, minutes from Kurralta Park Shopping Centre, quality schools are within easy reach including Black Forest and Richmond Primary Schools and recreational reserves.

Land Size : 371 sqm
View : <https://www.michaelkris.com.au/sale/sa/western-beachside-suburbs/kurralta-park/residential/house/7114496>

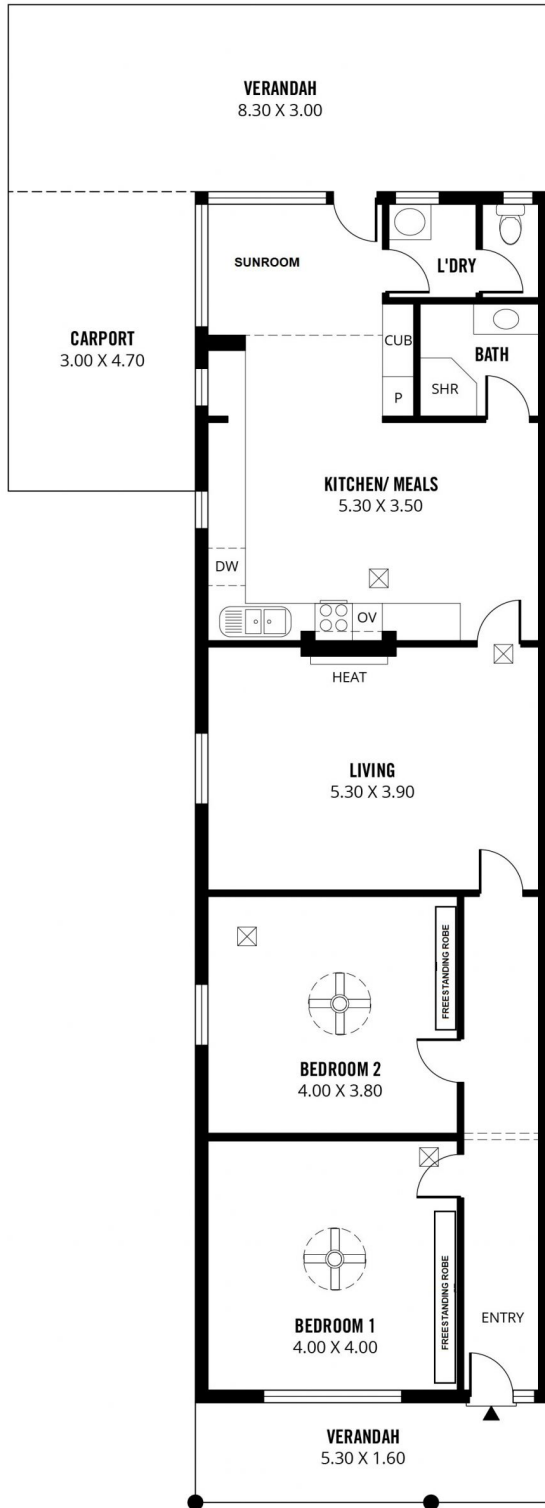
With its commanding location this C1926 built maisonette on 371m2 (approx.) will offer the new owner an opportunity to explore and redecorate to their own likes. The home has high ceilings, plenty of natural light and a fresh white decor throughout. There is a separate hallway leading to 2 spacious bedrooms with freestanding robes and ceiling fans, separate lounge room with a built-in gas heater. Towards the rear of the home is the delightful open plan living area with retro style kitchen/meals has plenty of



Kris Papagiannis
08 8353 3000

NOT IN POSITION

UNDERCOVER STORAGE AREA
4.00 X 2.00



166m²
TOTAL

111m²
Living

8m²
Shed

14m²
Carport

33m²
Verandah



14 BROUGHTON AVENUE, KURRALTA PARK

Scale in metres. This drawing is for illustration purposes only. All measurements are approximate and details intended to be relied upon should be independently verified.

Produced by **The Fotobase Group**