



4 Light Terrace GLENELG NORTH SA

3  1  2 

SOLID BUY IN A FABULOUS LOCATION - RESIDE, INVEST OR REDEVELOP!

This is a wonderful opportunity to be part of this tightly held suburb, within walking distance to some brilliant locations including the Historic Old Gum Tree Reserve, Glenelg Central, Glenelg Beach, Patawalonga, St Leonard's Primary School and public transport on Anzac Highway. Immanuel College R-13, fabulous shopping at Harbour Town and Adelaide Airport are only minutes away.

The home is of red brick construction, built C1947, set on a generous allotment of approximately 556m² in a lovely tree lined street amongst a mixture of other character and modern homes.

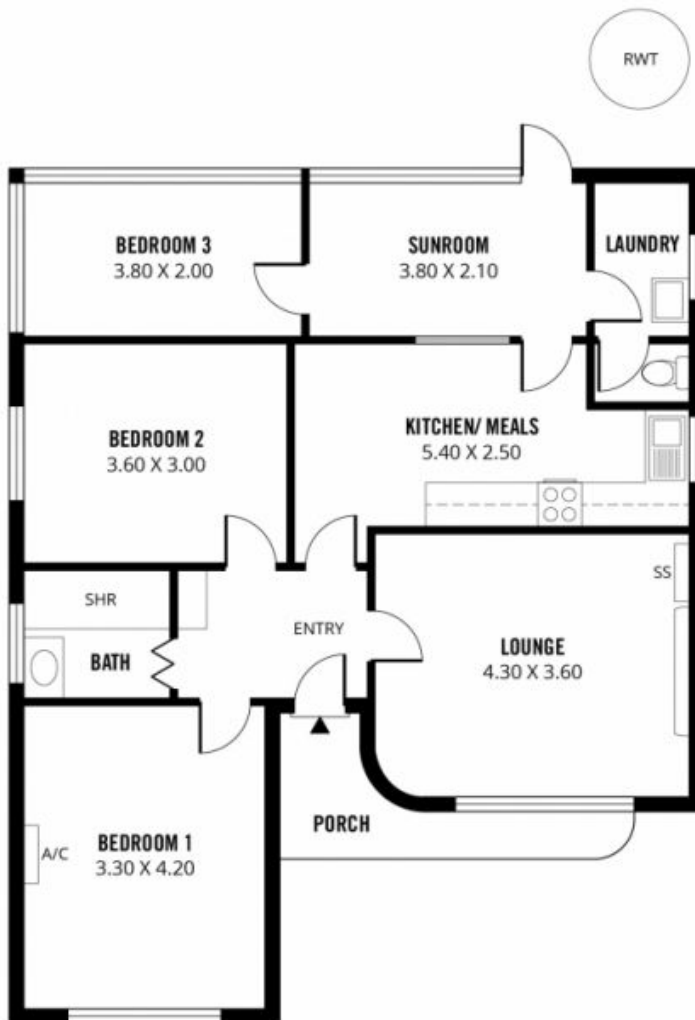
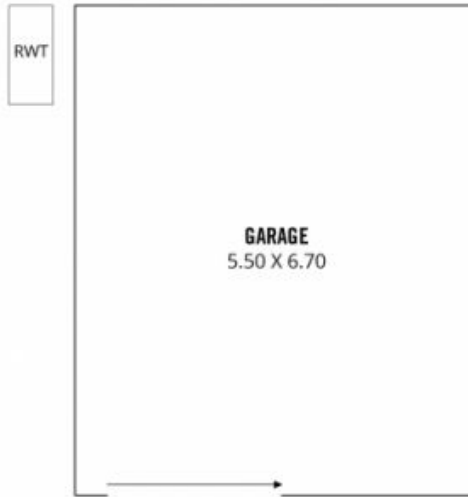
Internal features showcase a gorgeous retro style decor with some modern upgrades. The current floor plan will

Land Size : 556 sqm

View : <https://www.michaelkris.com.au/sale/sa/western-beachside-suburbs/glenelg-north/residential/house/7248018>



Michael Georgiadis
08 8353 3000



135m²

TOTAL

93m²

Living

5m²

Porch

37m²

Garage



4 LIGHT TERRACE, GLENELG NORTH

Scale in metres. This drawing is for illustration purposes only. All measurements are approximate and details intended to be relied upon should be independently verified.

Produced by **The Fotobase Group**