






4/36 Crissoula Avenue HOPE VALLEY SA

2  1  1 

Brilliant location close to Hope Valley Shopping Centre, Medical Centre, public transport and only a short drive to Tea Tree Gully Shopping Complex.

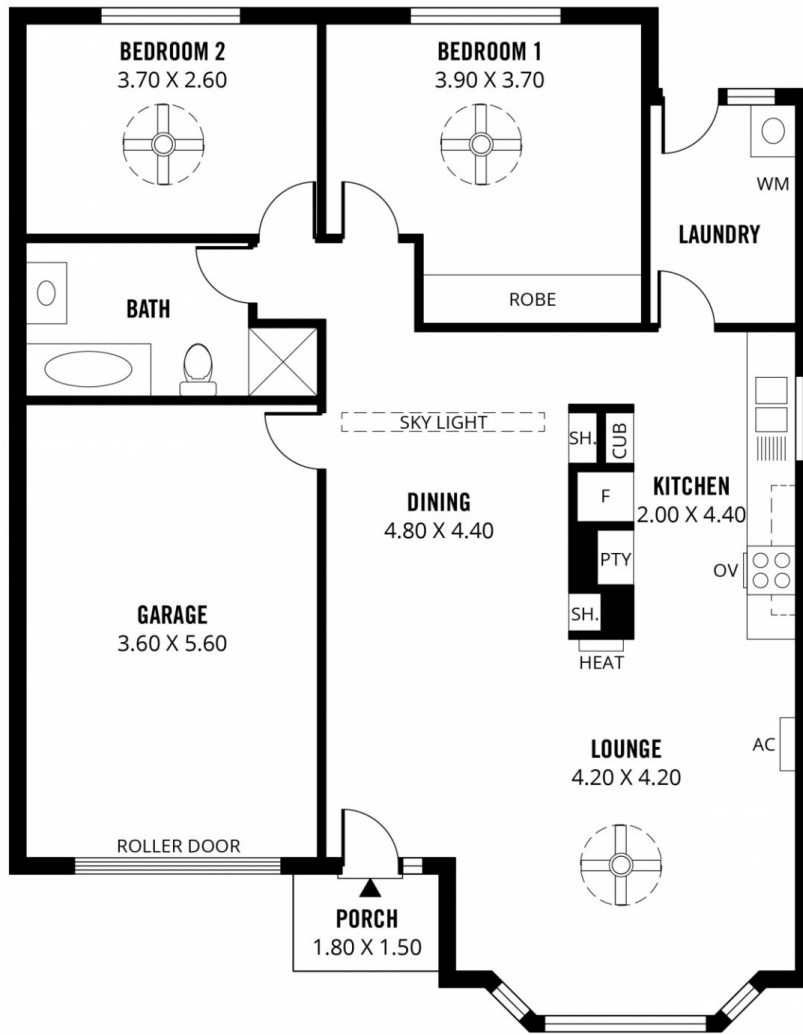
Get ready to relax and enjoy this lovely unit located to the rear of a well-kept group. Enjoy private and quiet surroundings, including a good size courtyard with garden shed and easy-care garden areas.

The internal floor plan is an absolute delight, offering 2 good size bedrooms, main with built-in robe. The spacious living area comprising of lounge with feature bay window and reverse cycle air conditioning unit, there is a separate dining area and a modern kitchen with plenty of built-in cupboard/bench space and quality stainless steel gas cooking appliances. The unit is serviced by the beautiful bathroom with bath, shower alcove, vanity and toilet and there is a great size separate laundry with outside access.

View : <https://www.michaelkris.com.au/sale/sa/north-north-east-suburbs/hope-valley/residential/unit/7312961>



Michael Georgiadis
08 8353 3000



118m²

TOTAL

90m²

Living

4m²

Shed

22m²

Garage

2m²

Porch



4/38 CRISSOULA AVENUE, HOPE VALLEY

Scale in metres. This drawing is for illustration purposes only. All measurements are approximate and details intended to be relied upon should be independently verified.

Produced by **The Fotobase Group**