



33 Hobart Road HENLEY BEACH SOUTH SA

3  **1**  **2** 

FABULOUS NORTH FACING DEVELOPMENT OPPORTUNITY ON 760M2 (approx.)

There are so many reasons to consider this property!
RESIDE, INVEST OR REDEVELOP! Allotment dimensions 18.28m Frontage and rear x 41.14m Depth.

Henley Beach South is one of Adelaide's "HOT SPOT" locations, walk to glorious beaches and Linear Park and reserve at end of the road. Vibrant Henley Square is only minutes away and you have the choice of public and private schools including the ever so popular Henley High. Public transport is readily available for travel to the CBD and surrounding locations.

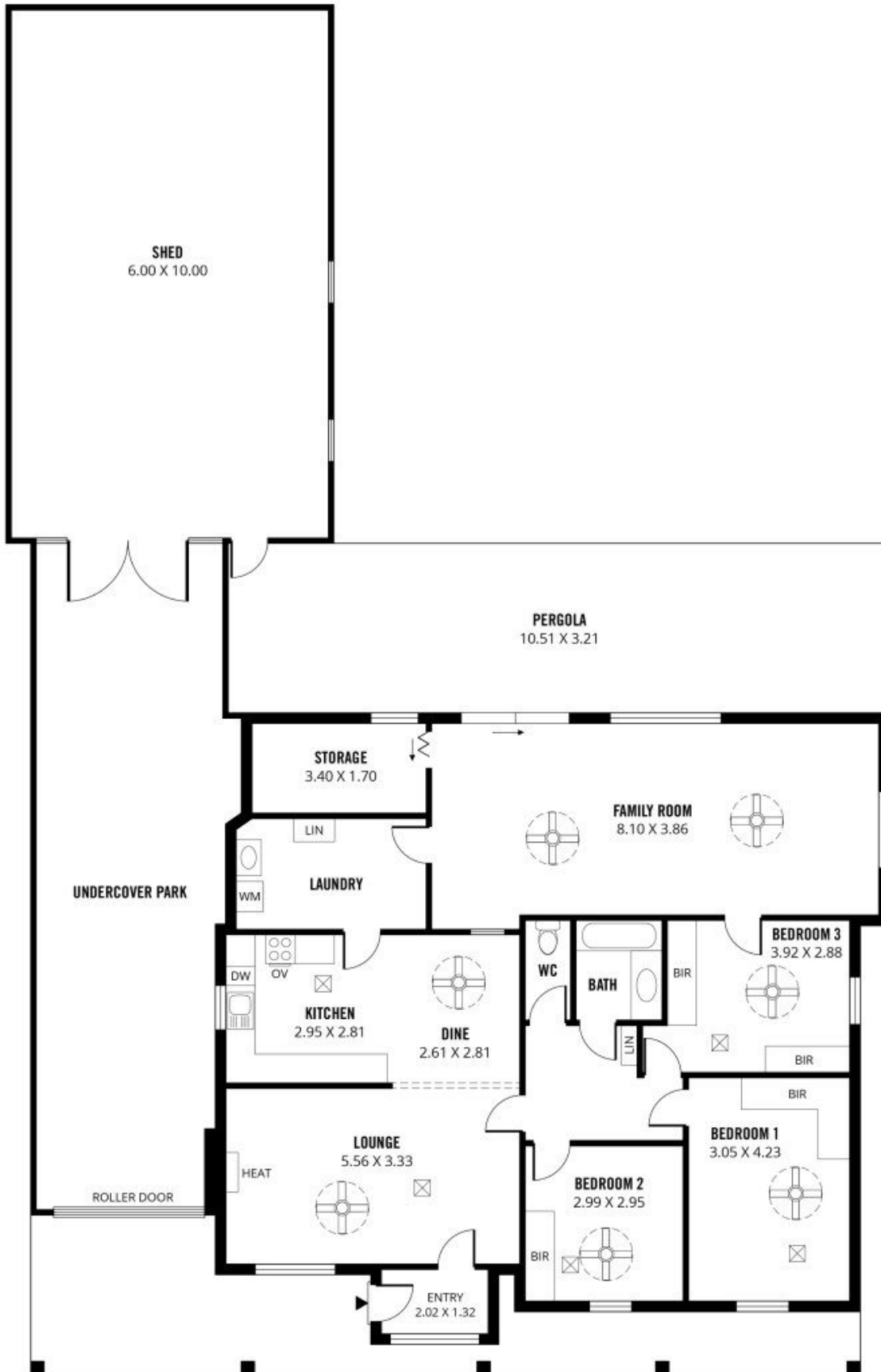
The C1958 built home is set on an allotment of approximately 760m2 and is sure to suit those looking to

Land Size : 760 sqm

View : <https://www.michaelkris.com.au/sale/sa/western-beachside-suburbs/henley-beach-south/residential/house/7322465>



Michael Georgiadis
08 8353 3000



288m²

TOTAL

138m²

Living

63m²

Shed

40m²

Pergola

47m²

Undercover Park



33 Hobart Road, Henley Beach South

Scale in metres. This drawing is for illustration purposes only. All measurements are approximate and details intended to be relied upon should be independently verified.

Produced by **The Fotobase Group**