





### 31 Farnham Road KESWICK SA

3  2  2 

Calling all Developers, zoned Housing Diversity Neighbourhood (HDN) this location offers various opportunities and is fast becoming a "DEVELOPER'S HOT SPOT".

Only 3.7kms (approx.) to the Adelaide CBD. Enjoy an abundance of public transport options, in the Adelaide High School zone, close to Uni SA West Campus, TAFE SA, Adelaide Showgrounds, Parklands and Sporting Fields and many shopping precincts.

#### THE LAND:

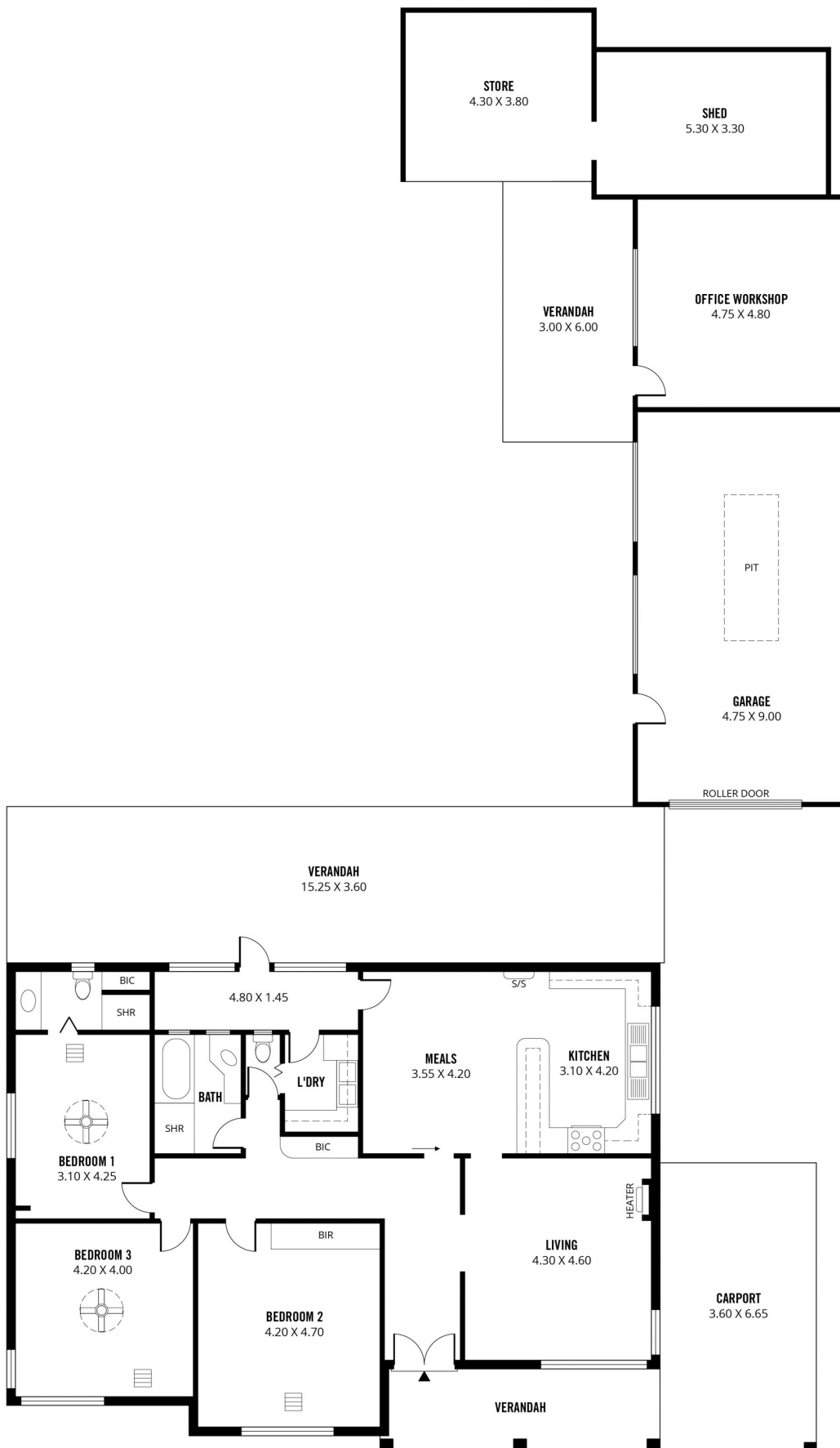
Level allotment of 989 m2 approx.  
Boundary measurements: Frontage 21.64, depth 45.72

#### THE EXISTING HOME:

**Land Size** : 989 sqm  
**View** : <https://www.michaelkris.com.au/sale/sa/western-beachside-suburbs/keswick/residential/house/7471910>



**Con Papagiannis**  
08 8353 3000



<b>365m<sup>2</sup></b>	<b>151m<sup>2</sup></b>	<b>36m<sup>2</sup></b>	<b>70m<sup>2</sup></b>	<b>84m<sup>2</sup></b>	<b>24m<sup>2</sup></b>
<b>TOTAL</b>	Living	Shed/ Store	Garage/ Office Workshop	Verandah	Carport



**31 FARNHAM ROAD, KESWICK**

Scale in metres. This drawing is for illustration purposes only. All measurements are approximate and details intended to be relied upon should be independently verified.

Produced by **The Fotobase Group**