






13 & 15 Hume Street SALISBURY NORTH SA

6  2  2 

13 and 15 Hume Street, Salisbury North is being offered as a whole package.

Imagine the excitement for the 1st home buyer or investor to grab both! Endless opportunities await as these affordable homes could offer the astute buyer a home of their own, plus the opportunity to become a landlord with rental income on the 2nd property.

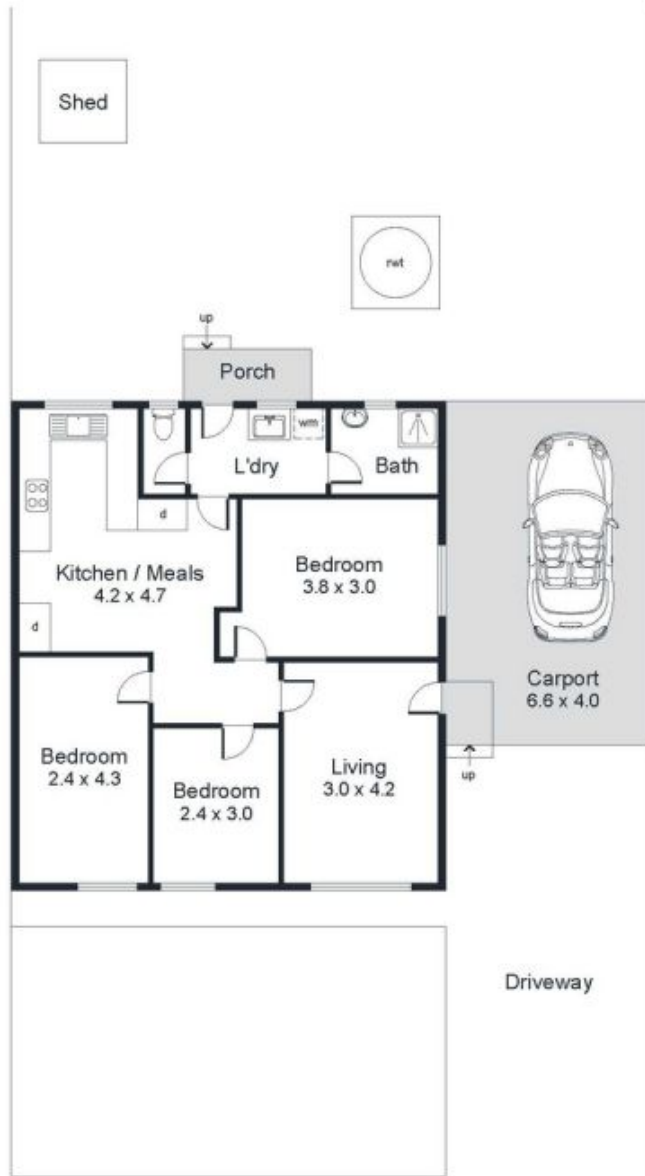
PROPERTY FEATURES:

Both dwellings are 1960 built on a combined allotment of approximately 1123m2, well positioned within walking distance to local schools, public transport, reserves, sports clubs, and only a short distance to fabulous shopping at Hollywood Plaza and the Salisbury Hub.

Land Size : 1123 sqm
View : <https://www.michaelkris.com.au/sale/sa/north-north-east-suburbs/salisbury-north/residential/house/7637418>



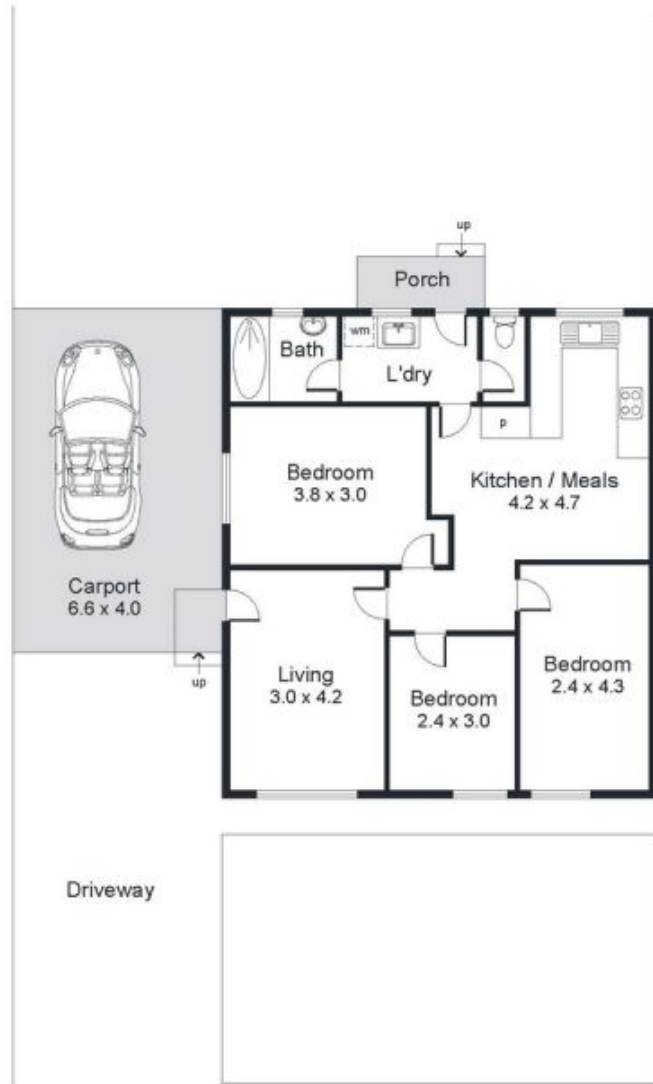
Michael Georgiadis
08 8353 3000



13 Hume St Salisbury North

Area (estimate only)	
Living	72.9 m ²
Carport	26.6 m ²
Porch	2.7 m ²
Total	102.2 m²

For illustrative purposes only.
All measurements are approximate



15 Hume St Salisbury North

Area (estimate only)	
Living	72.9 m ²
Carport	26.6 m ²
Porch	2.7 m ²
Total	102.2 m²

For illustrative purposes only.
All measurements are approximate