






77 Selth Street ALBERT PARK SA

3  1  2 

This fantastic suburb is one of those hidden gems, minutes from so many amenities including Westfield West Lakes, train and bus transport, Port Road to take you to Historical Port Adelaide, Adelaide CBD and surrounding locations, fabulous public and private schools within easy reach, beautiful beaches and recreational parks nearby.

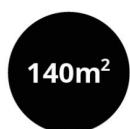
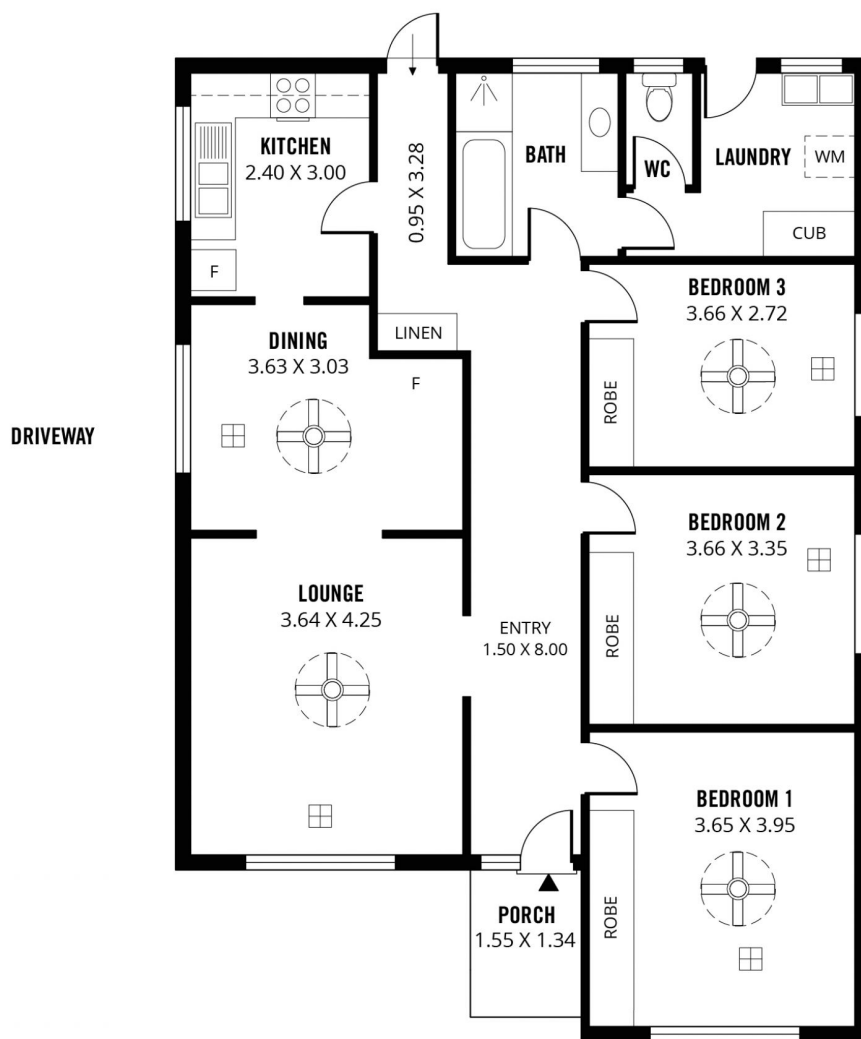
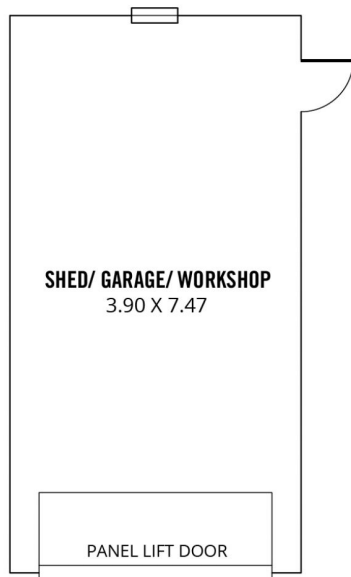
The home was built in 1962 on a generous allotment size of 696m² (approx.) and has been updated throughout including kitchen, ducted reverse cycle air conditioner for year-round comfort and new flooring are just a few of the many upgrades.

This character home offers a cosy and comfortable floorplan of 3 good size bedrooms, all with built-in robes, carpet and ceiling fans. The main living areas are light-filled and delightful with low maintenance

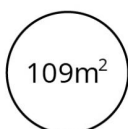
Land Size : 696 sqm
View : <https://www.michaelkris.com.au/sale/sa/western-beachside-suburbs/albert-park/residential/house/7753062>



Michael Georgiadis
08 8353 3000



TOTAL



Living



Shed/Garage/
Workshop



Porch



77 SELTH STREET, ALBERT PARK

Scale in metres. This drawing is for illustration purposes only. All measurements are approximate and details intended to be relied upon should be independently verified. Produced by **The Fotobase Group**