



44 Walker Avenue HEATHFIELD SA

3  1  2 

If you are ready for a lifestyle change don't let this property pass you by.

THE LOCATION

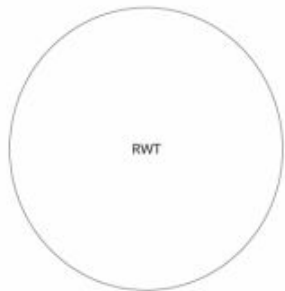
Heathfield is located approximately 25 mins by car from the Adelaide CBD offering a wonderful countryside sanctuary only minutes from some of Adelaide Hills iconic Townships, including Stirling, Aldgate, Crafers and Bridgewater, enjoy a healthy lifestyle at Mark Oliphant and Heathfield Conservation Parks, or make your way to some of the many secluded wineries in this fabulous region.

Nearby Schools include Heathfield High and Primary Schools, Aldgate Primary and Upper Sturt Primary, serviced by public transport.

Price : NEW PRICE \$699,000 - \$745,000
Land Size : 1140 sqm
View : <https://www.michaelkris.com.au/sale/sa/adelaide-hills/heathfield/residential/house/7905052>



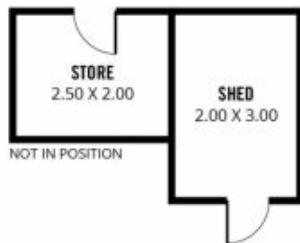
Kris Papagiannis
08 8353 3000



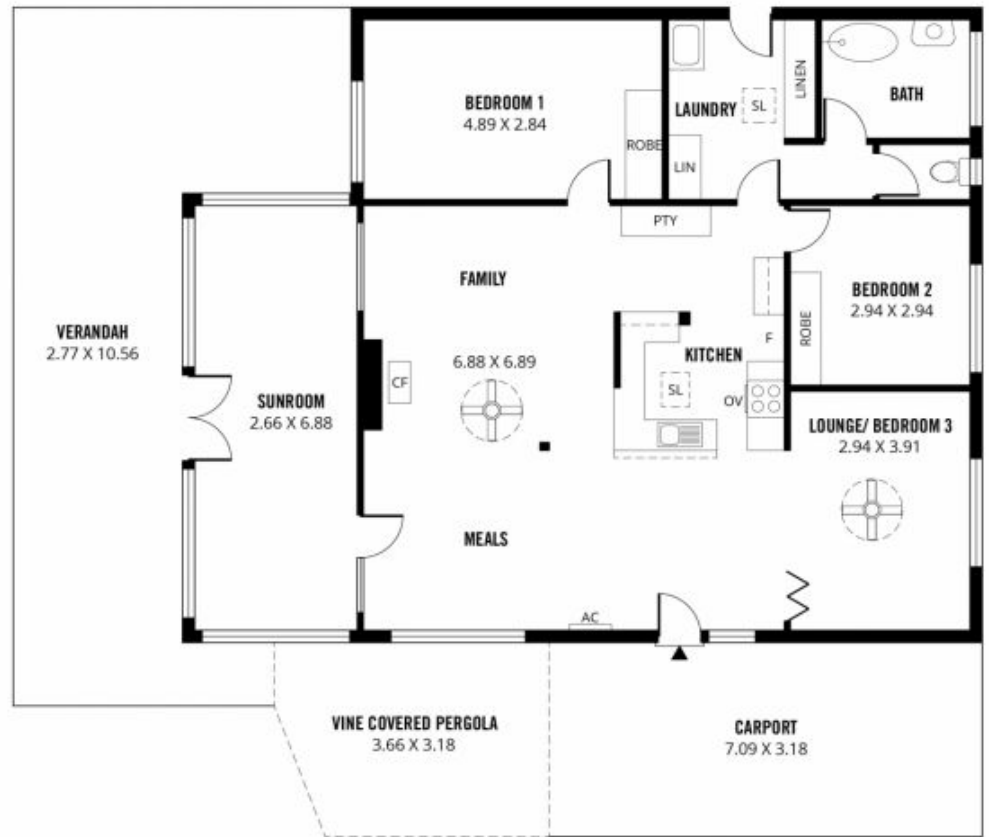
NOT IN POSITION



NOT IN POSITION



NOT IN POSITION



224m²

TOTAL



128m²

Living



18m²

Shed/ Store



23m²

Carport



42m²

Verandah



13m²

Vine Covered Pergola



44 WALKER AVENUE, HEATHFIELD

Scale in metres. This drawing is for illustration purposes only. All measurements are approximate and details intended to be relied upon should be independently verified.

Produced by The Fotobase Group